

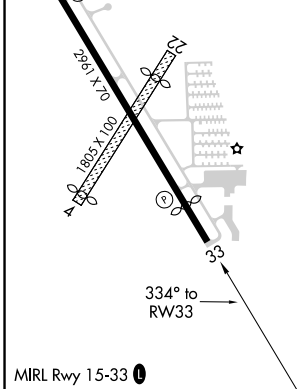
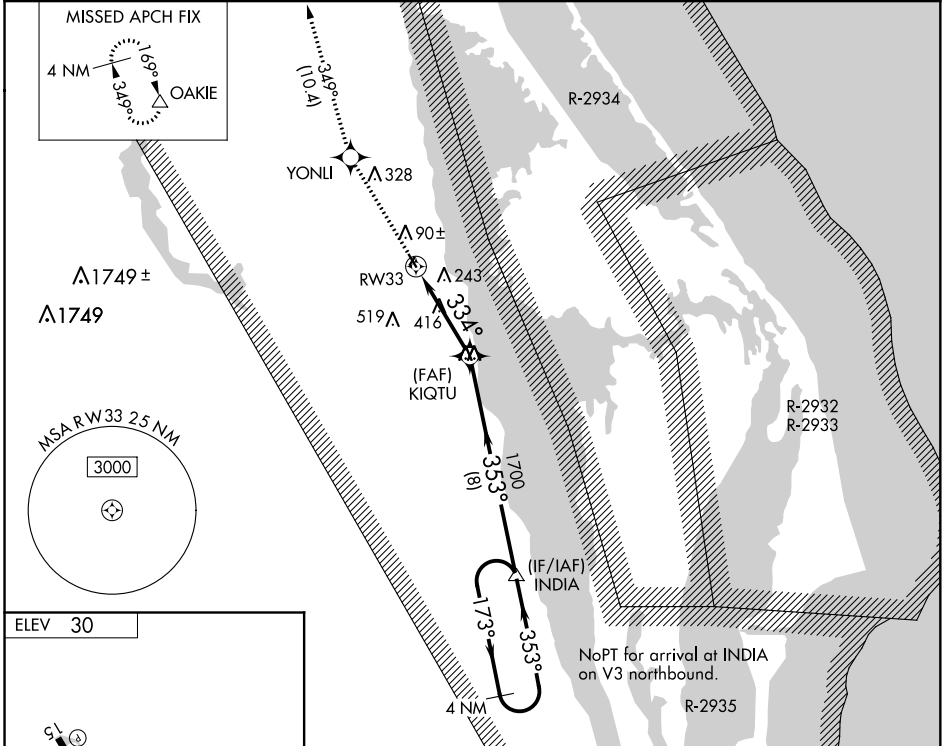
APP CRS 334°	Rwy Idg TDZE Apt Elev	N/A N/A 30
------------------------	-----------------------------	-------------------------

RNAV (GPS)-B

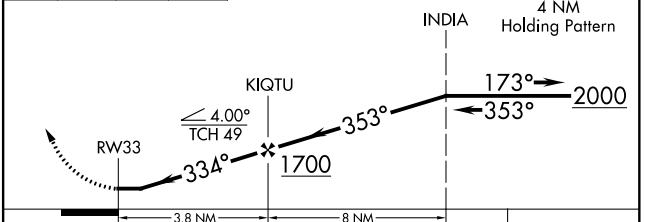
ARTHUR DUNN AIR PARK (X21)

RNP APCH.	MISSED APPROACH: Climb to 2000 direct YONLI and on track 349° to OAKIE and hold.
▼ Rwy 33 helicopter visibility reduction below 1 SM NA. ▲ NA Procedure NA night.	

AWOS-3 119.725	ORLANDO APP CON 134.95 281.425	UNICOM 123.0 (CTAF) 0
--------------------------	------------------------------------------	---------------------------------



2000	YONLI	tr 349°	OAKIE
↑	✧		△



CATEGORY	A	B	C	D
C CIRCLING	680-1	650 (700-1)	880-2½ 850 (900-2½)	880-2¾ 850 (900-2¾)

SE-3, 10 OCT 2019 to 07 NOV 2019

SE-3, 10 OCT 2019 to 07 NOV 2019