

RNAV (GPS)-B

HARFORD COUNTY (ØW3)

APP CRS	Rwy Idg	N/A
104°	TDZE	N/A
	Apt Elev	409

RNP APCH.

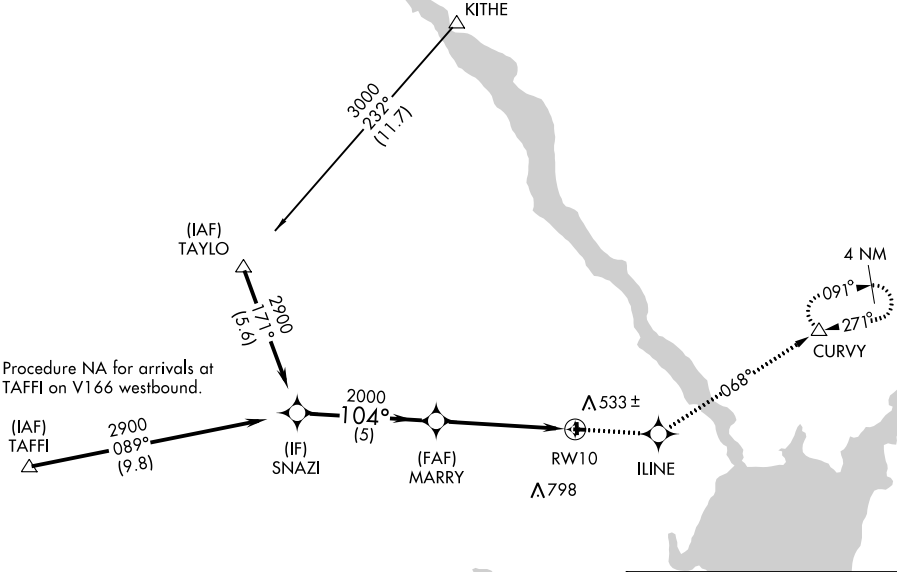
▼ Use Phillips AAF altimeter setting; when not received use Baltimore/Washington Intl Thurgood Marshall altimeter setting and increase MDA 60 feet. Circling NA to Rwys 1, 14, 19 and 32.
 ▲ NA

MISSED APPROACH: Climb to 3000 direct ILINE and on track 068° to CURVY and hold, continue climb-in-hold to 3000.

POTOMAC APP CON
125.525 291.625

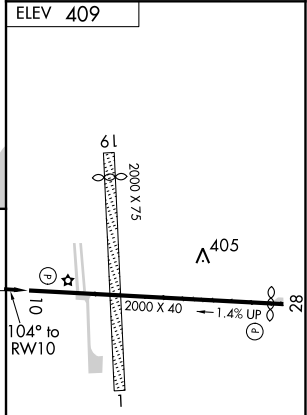
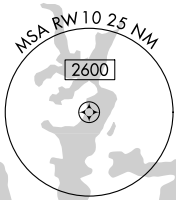
UNICOM
122.8 (CTAF) 0

Procedure NA for arrivals at KITHE on V499 northbound and V3-408 eastbound.



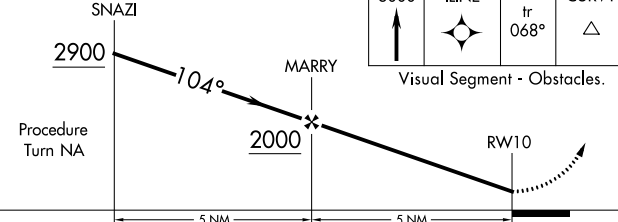
Procedure NA for arrivals at TAFFI on V166 westbound.

(IAF) TAFFI
 ▲



3000	ILINE	tr 068°	CURVY
↑	✧		△

Visual Segment - Obstacles.



CATEGORY	A	B	C	D
CIRCLING	960-1 551 (600-1)		NA	

LIRL Rwy 10-28 0
 REIL Rwys 10 and 28 0

NE-3, 10 OCT 2019 to 07 NOV 2019

NE-3, 10 OCT 2019 to 07 NOV 2019