

APP CRS	Rwy Idg	<b>5011</b>
<b>250°</b>	TDZE	<b>520</b>
	Apt Elev	<b>520</b>

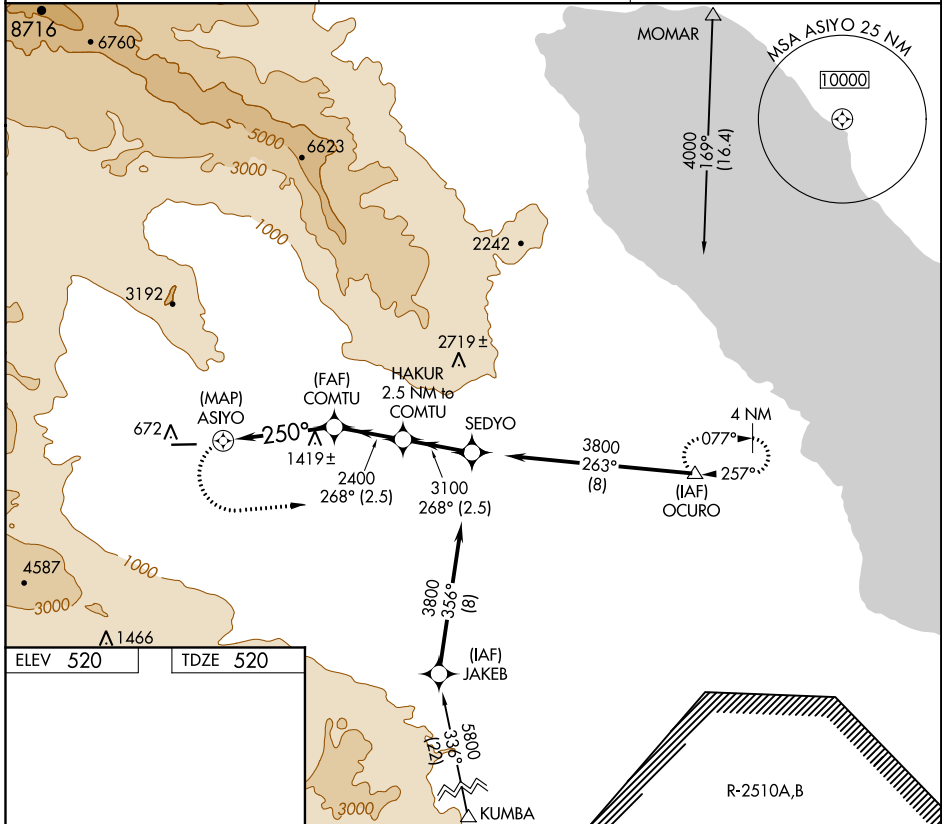
# RNAV (GPS) RWY 26

BORREGO VALLEY (L08)

**⚠** If local altimeter setting not received, use Imperial County altimeter setting and increase all MDAs 580 feet.  
**⚠ NA** Circling not authorized south of Rwy 8-26.  
 GPS or RNP-0.3 required. DME/DME RNP-0.3 NA.

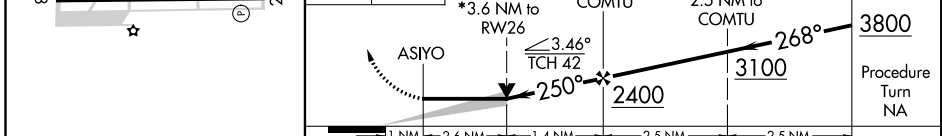
**MISSED APPROACH:** Climbing left turn to 4000 direct OCURO WP and hold.

AWOS-3P <b>126.575</b>	LOS ANGELES CENTER <b>128.6 291.7</b>	UNICOM <b>122.8 (CTAF) 0</b>
---------------------------	--	---------------------------------



ELEV 520	TDZE 520
----------	----------

**OCURO** **△** VGSi and descent angles not coincident (VGSi Angle 3.00/TCH 28).  
 \*VDP not authorized with Imperial County altimeter setting.



CATEGORY	A	B	C	D
LNAV MDA	1720-1¼ 1200 (1200-1¼)	1720-1½ 1200 (1200-1½)	1720-3	1200 (1200-3)
CIRCLING	1720-1¼ 1200 (1200-1¼)	1720-1½ 1200 (1200-1½)	1720-3	1200 (1200-3)

SW-3, 10 OCT 2019 to 07 NOV 2019

SW-3, 10 OCT 2019 to 07 NOV 2019