

|  |                        |   |             |
|--|------------------------|---|-------------|
| WAAS<br>CH <b>45635</b><br><b>W33A</b> | APP CRS<br><b>330°</b> | Rwy Idg<br>TDZE <b>7926</b><br>Apt Elev <b>7950</b> | <b>8303</b> |
|--|------------------------|---|-------------|

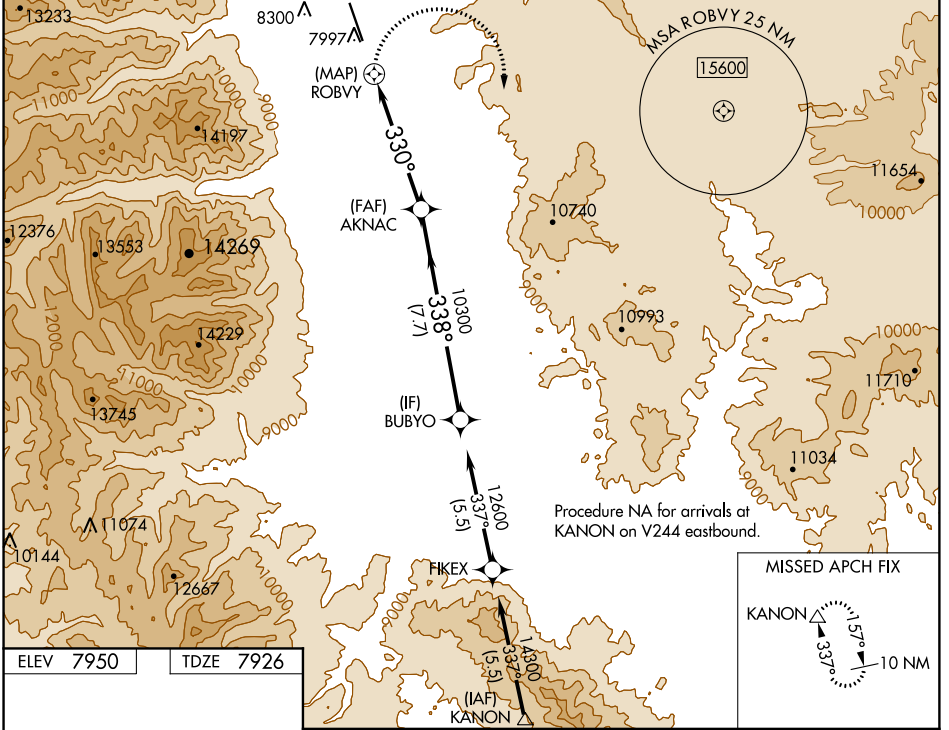
# RNAV (GPS) RWY 33

CENTRAL COLORADO RGNL (A.E.J)

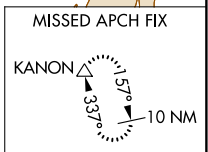
**⚠** Circling NA northeast of Rwy 15-33. DME/DME RNP-0.3 NA.  
**⚠** NA When local altimeter setting not received, use Solida altimeter setting and increase all MDA 100 feet. VDP NA with Solida altimeter setting.  
**⚠** -17°C #Missed approach requires minimum climb of 425 feet per NM to 14100.

**MISSED APPROACH:** Climbing right turn to 16000 direct KANON and hold, continue climb-in-hold to 16000.

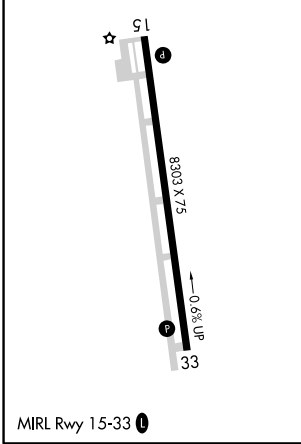
|                          |                                       |                                 |
|--------------------------|---------------------------------------|---------------------------------|
| AWOS-3<br><b>132.925</b> | DENVER CENTER<br><b>119.85 363.15</b> | UNICOM<br><b>122.8 (CTAF) 0</b> |
|--------------------------|---------------------------------------|---------------------------------|



Procedure NA for arrivals at KANON on V244 eastbound.



|           |           |
|-----------|-----------|
| ELEV 7950 | TDZE 7926 |
|-----------|-----------|



| 16000             | KANON   | VGSI and descent angles not coincident (VGSI Angle 3.00/TCH 41). | BUBYO                   |    |
|-------------------|---------|--|-------------------------|----|
| *LNAV only.       |         | *1.8 NM to ROBYV   | AKNAC                   |    |
| ROBYV             |         | 330°   | 12600                   |    |
| 1.3               |         | 1.8 NM   | 3.44° TCH 41            |    |
| A                 |         | B  | C                       |    |
| 7.7 NM            |         |  |                         |    |
| CATEGORY          | A       | B  | C                       | D  |
| #LP MDA           | 8960-1½ | 1034 (1100-1½)   | 8960-3<br>1034 (1100-3) | NA |
| LP MDA            | 9840-1½ | 1914 (1900-1½)   | 9840-3<br>1914 (1900-3) | NA |
| #LNAV MDA         | 9300-1½ | 1374 (1400-1½)   | 9300-3<br>1374 (1400-3) | NA |
| LNAV MDA          | 9980-1½ | 2054 (2100-1½)   | 9980-3<br>2054 (2100-3) | NA |
| <b>C</b> CIRCLING | 9980-1½ | 2030 (2100-1½)   | 9980-3<br>2030 (2100-3) | NA |

SW-1, 10 OCT 2019 to 07 NOV 2019

SW-1, 10 OCT 2019 to 07 NOV 2019