

APP CRS	Rwy Idg	N/A
189°	TDZE	N/A
	Apt Elev	4492

# RNAV (GPS)-A

MCCARLEY FIELD (U02)

RNP APCH.

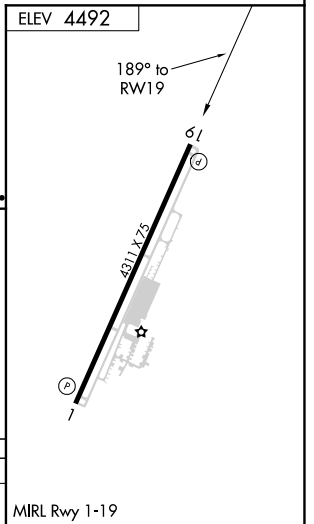
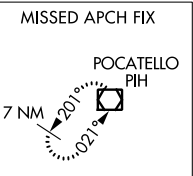
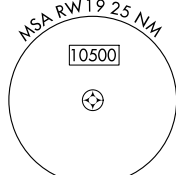
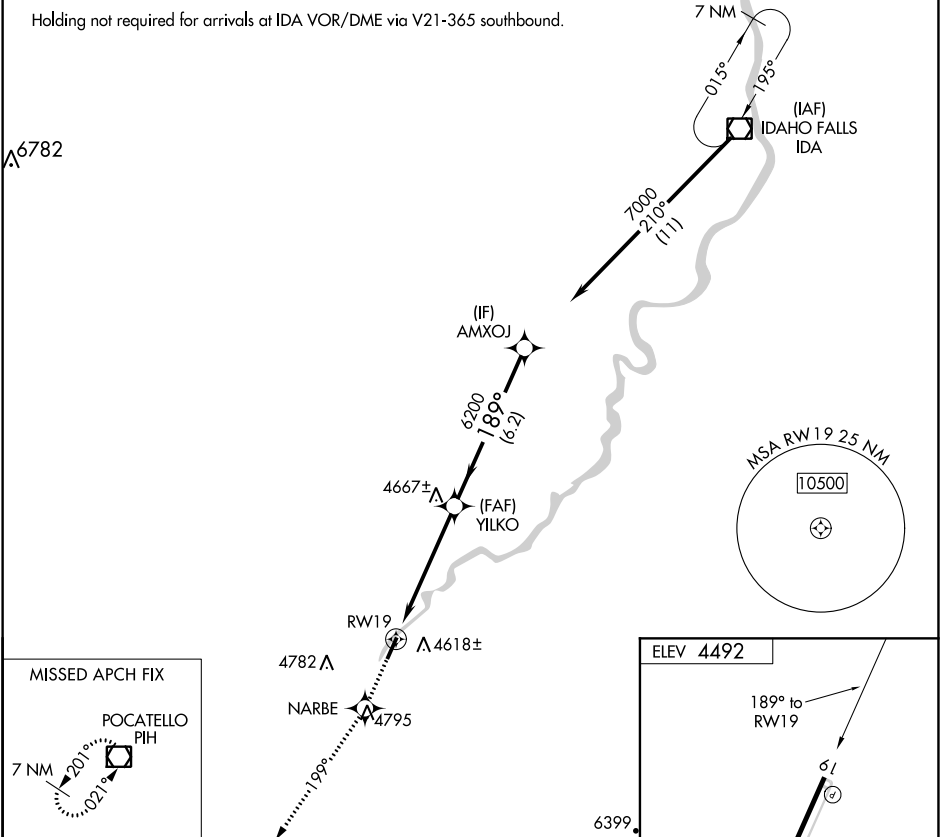
**▼** Use Pocatello altimeter setting, when not received use Idaho Falls altimeter setting. Helicopter visibility reduction below 1 SM NA.

**▲** NA

MISSED APPROACH: Climb to 8500 direct NARBE and on 199° track to PIH VOR/DME and hold.

SALT LAKE CITY CENTER <b>128.35 239.25</b>	UNICOM <b>122.8 (CTAF)</b>
---	-------------------------------

Holding not required for arrivals at IDA VOR/DME via V21-365 southbound.



8500	NARBE	199° tr	PIH	Visual Segment - Obstacles.	AMXOJ
↑	✧		◻	YILKO	7000
				6200	Procedure Turn NA
				5.2 NM	6.2 NM

CATEGORY	A	B	C	D
CIRCLING	5340-1 848 (900-1)	5340-1¼ 848 (900-1¼)	5340-2½ 848 (900-2½)	5380-3 888 (900-3)

NW-1, 10 OCT 2019 to 07 NOV 2019

NW-1, 10 OCT 2019 to 07 NOV 2019