

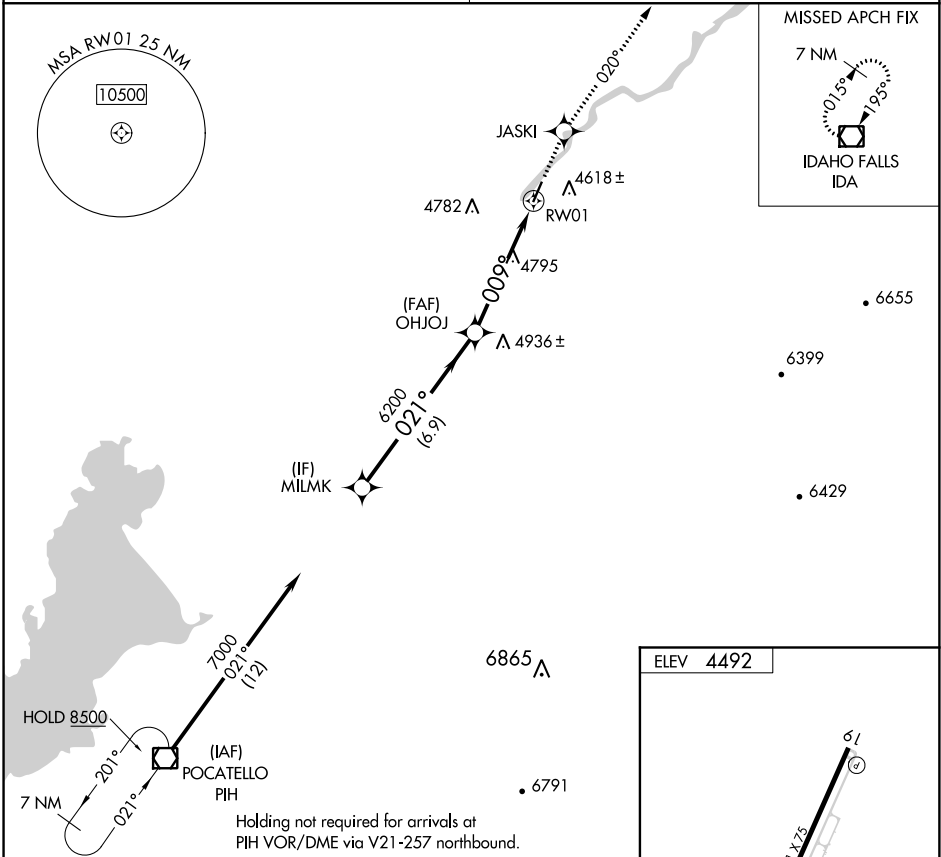
APP CRS	Rwy Idg	N/A
009°	TDZE	N/A
	Apt Elev	4492

RNAV (GPS)-B

MCCARLEY FIELD (U02)

RNP APCH.	MISSED APPROACH: Climb to 7000 direct JASKI and on 020° track to IDA VOR/DME and hold.
▼ Use Pocatello altimeter setting, when not received use Idaho Falls altimeter setting. Helicopter visibility reduction below 1 SM NA.	

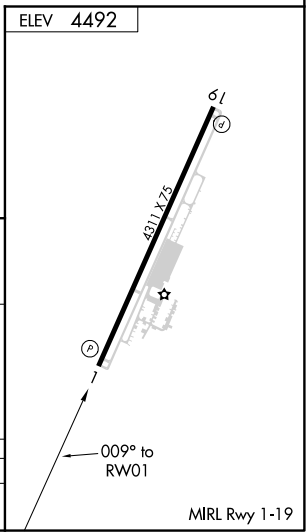
SALT LAKE CITY CENTER 128.35 239.25	UNICOM 122.8 (CTAF)
---	-------------------------------



VGSI and descent angle not coincident (VGSI Angle 3.00/TCH 45).

	7000	JASKI	020°	IDA
	↑	✧	Tr	◻

Procedure Turn NA	MILMK	OHJOJ	RW01
	7000	6200	
	021°	3.05° TCH 40	009°
	6.9 NM	5.2 NM	



NW-1, 10 OCT 2019 to 07 NOV 2019

NW-1, 10 OCT 2019 to 07 NOV 2019