

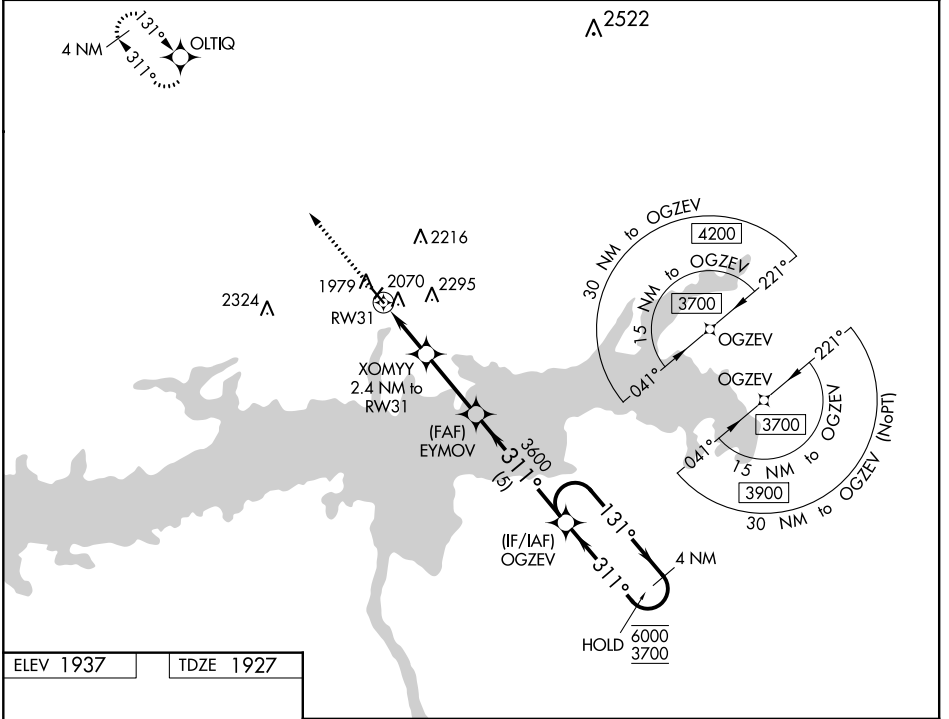
WAAS CH 97740 W31A	APP CRS 311°	Rwy Idg TDZE 1927 Apt Elev 1937
---------------------------------	------------------------	---

RNAV (GPS) RWY 31

GARRISON MUNI (D05)

RNP APCH: ▼ Circling NA to Rws 3 and 21. Baro-VNAV NA. ▲ NA Use Minot Intl altimeter setting.	MISSED APPROACH: Climb to 3900 direct OLTIQ and hold.
---	---

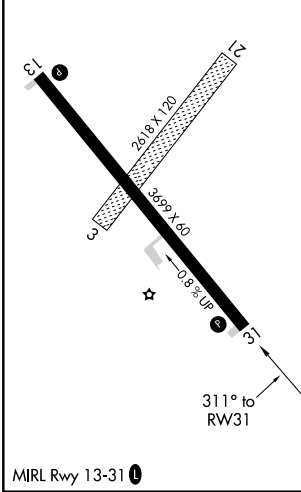
MINOT INTL ASOS 118.725	MINNEAPOLIS CENTER 127.6 279.6	CTAF 122.9
-----------------------------------	--	----------------------



NC-1, 10 OCT 2019 to 07 NOV 2019

NC-1, 10 OCT 2019 to 07 NOV 2019

ELEV 1937	TDZE 1927
-----------	-----------



3900 OLTIQ VGSi and RNAV glidepath not coincident (VGSi Angle 3.00/TCH 29).

4 NM Holding Pattern

* LNAV only

XOMYY 2.4 NM to RW31

EYMOV 3600

OGZEV

RW31 2700*

2.4 NM 2.8 NM 5 NM

131° → 6000

← 311° 3700

GP 3.00° TCH 40

CATEGORY	A	B	C	D
LPV DA	2250-1	323 (400-1)		NA
LNAV/VNAV DA	2335-1¼	408 (400-1¼)		NA
LNAV MDA	2460-1	533 (600-1)		NA
<input checked="" type="checkbox"/> CIRCLING	2640-1 703 (800-1)	2720-1 783 (800-1)		NA