

APP CRS	Rwy Idg	<b>3600</b>
<b>133°</b>	TDZE	<b>1606</b>
	Apt Elev	<b>1608</b>

# RNAV (GPS) RWY 14

ROBERTSON FIELD (D55)

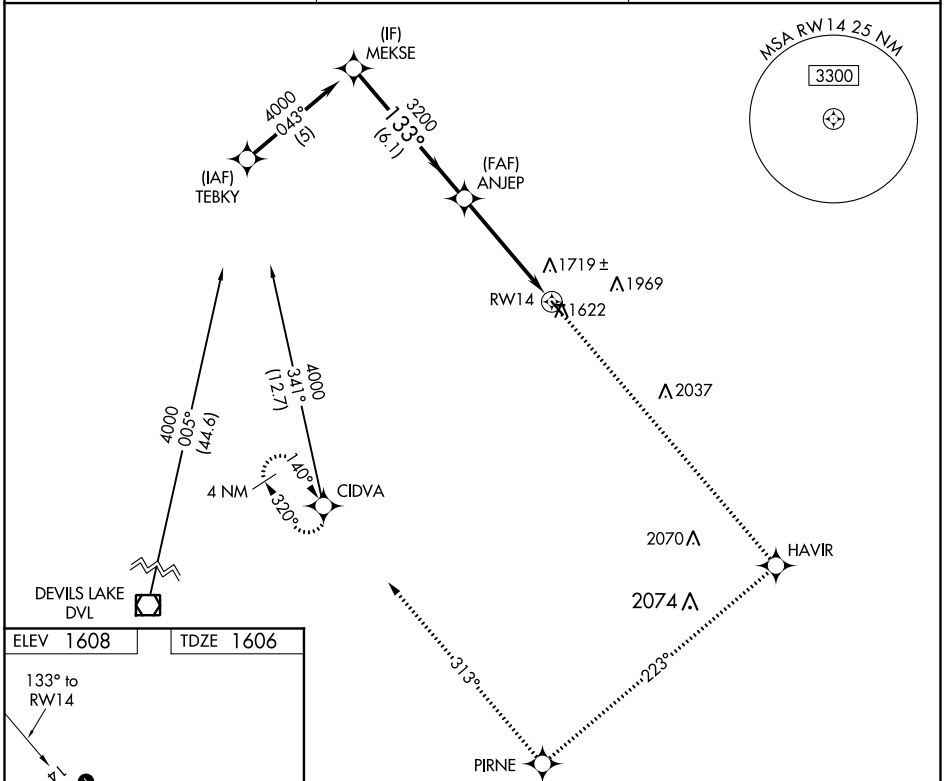
**⚠** DME/DME RNP-0.3 NA. Visibility reduction by helicopters NA.  
**⚠** When local altimeter setting not received use Devils Lake altimeter setting and increase all MDA 140 feet, increase LNAV and Circling Cat C visibility ½ mile, and Circling Cat B visibility ¼ mile.

**MISSED APPROACH:** Climb to 4000 direct HAVIR and via track 223° to PIRNE and via track 313° to CIDVA and hold.

AWOS-3  
**118.225**

MINNEAPOLIS CENTER  
**132.15 269.6**

UNICOM  
**122.8 (CTAF) 0**



NC-1, 10 OCT 2019 to 07 NOV 2019

NC-1, 10 OCT 2019 to 07 NOV 2019

ELEV 1608	TDZE 1606
-----------	-----------

MIRL Rwy 14-32 0

	4000	HAVIR	PIRNE	CIDVA
	↑	✦	tr 223°	tr 313°
	ANJEP	VGSIs and descent angles not coincident (VGSi Angle 3.00/TCH 28).		
	4000	3200	3.04°	TCH 40
Procedure Turn NA				
	6.1 NM		4.8 NM	
CATEGORY	A	B	C	D
LNAV MDA	2100-1	494 (500-1)	2100-1¼ 494 (500-1¼)	NA
CIRCLING	2240-1	632 (700-1)	2240-1¾ 632 (700-1¾)	NA