

WAAS CH 50515 W32A	APP CRS 313°	Rwy ldg TDZE Apt Elev	3600 1608 1608
--	------------------------	-----------------------------	---

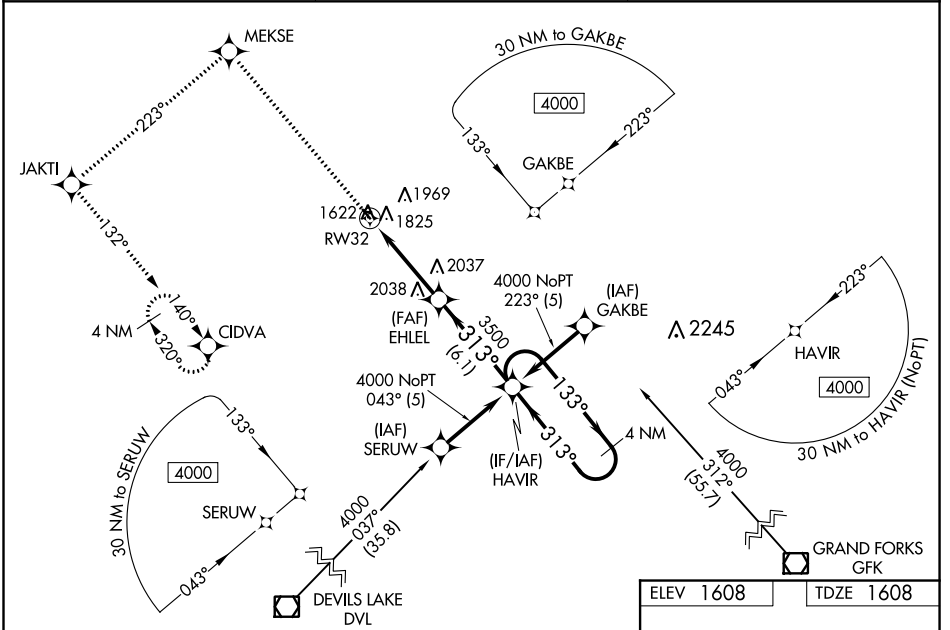
RNAV (GPS) RWY 32

ROBERTSON FIELD (D55)

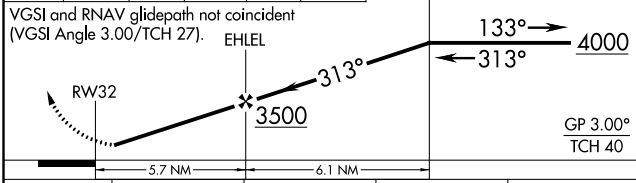
⚠ Baro-VNAV NA when using Devils Lake altimeter setting. For uncompensated Baro-VNAV systems, LNAV/VNAV NA below -18°C (0°F) or above 54°C (130°F).
⚠ DME/DME RNP-0.3 NA. Visibility reduction by helicopters NA. When local altimeter setting not received use Devils Lake altimeter setting and increase all DA 122 feet and all MDA 140 feet, increase LPV all Cats, LNAV and Circling Cat B visibility 1/4 mile and LNAV/VNAV all Cats, LNAV and Circling Cat C visibility 1/2 mile.

MISSED APPROACH: Climb to 4000 direct MEKSE and via track 223° to JAKTI and via track 132° to CIDVA and hold.

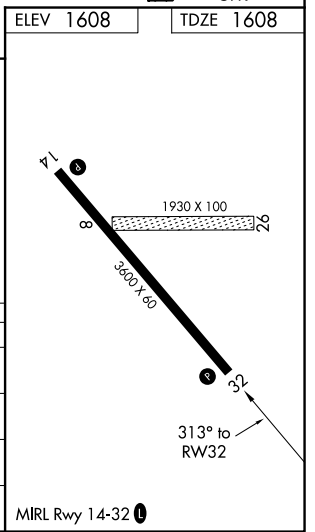
AWOS-3 118.225	MINNEAPOLIS CENTER 132.15 269.6	UNICOM 122.8 (CTAF) 📶
--------------------------	---	--



4000	MEKSE	tr 223°	JAKTI	tr 132°	CIDVA	HAVIR	4 NM Holding Pattern
------	-------	---------	-------	---------	-------	-------	----------------------



CATEGORY	A	B	C	D
LPV DA	1858-1	250 (300-1)		NA
LNAV/VNAV DA	2159-2	551 (600-2)		NA
LNAV MDA	2340-1	732 (800-1)	2340-2 732 (800-2)	NA
CIRCLING	2340-1	732 (800-1)	2340-2 732 (800-2)	NA



NC-1, 10 OCT 2019 to 07 NOV 2019

NC-1, 10 OCT 2019 to 07 NOV 2019