

WAAS CH 62838 W05A	APP CRS 051°	Rwy Idg TDZE 954 Apt Elev 964	4003
--	------------------------	---	-------------

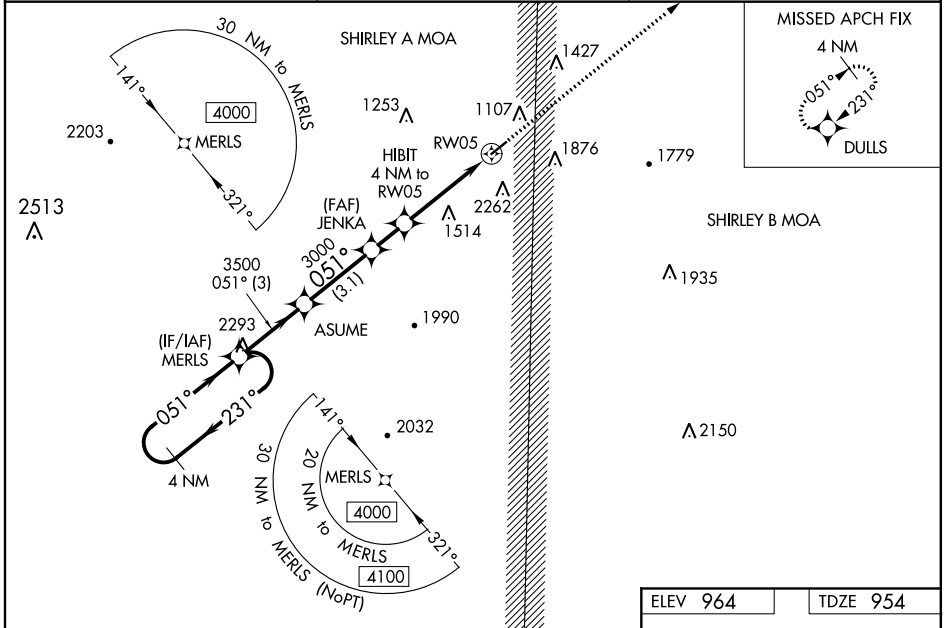
RNAV (GPS) RWY 5

SEARCY COUNTY (4A5)

▽ DME/DME RNP-0.3 NA. Circling NA SE of Rwy 5-23. Night Landing: Rwy 23 NA.
△NA Baro-VNAV NA. Use Flippin altimeter setting; when not received, use Harrison altimeter setting and increase all Cats LPV DA to 1396 and visibility 1/2 mile. LNAV/VNAV all Cats DA to 1981, and all MDA 60 feet. Helicopter visibility reduction below 3/4 SM NA.

MISSED APPROACH:
Climb to 4000 direct DULLS and hold.

FLP AWOS-3 132.075	MEMPHIS CENTER 126.85 281.55	CTAF 122.9
------------------------------	--	----------------------



4 NM Holding Pattern		VGSi and RNAV glidepath not coincident (VGSi Angle 3.25/TCH 43).		ELEV 964	TDZE 954
4000 ← 231°		ASUME		4000	DULLS
051° →		JENKA 3000		*LNAV only.	
3500		HIBIT 4 NM to RW05		DULLS	
3000		RW05		4003 X 75	
GP 3.45°		3 NM		1.0% UP	
TCH 56		3.1 NM		051° to RW05	
		1.5 NM		MIRL Rwy 5-23	
		4 NM		REIL Rwy 5 and 23	

SC-1, 10 OCT 2019 to 07 NOV 2019

SC-1, 10 OCT 2019 to 07 NOV 2019