

WAAS CH 56325 W21A	APP CRS 199°	Rwy Idg TDZE Apt Elev	3892 2026 2031
--	------------------------	-----------------------------	---

RNAV (GPS) RWY 21

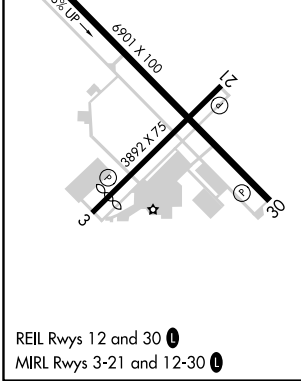
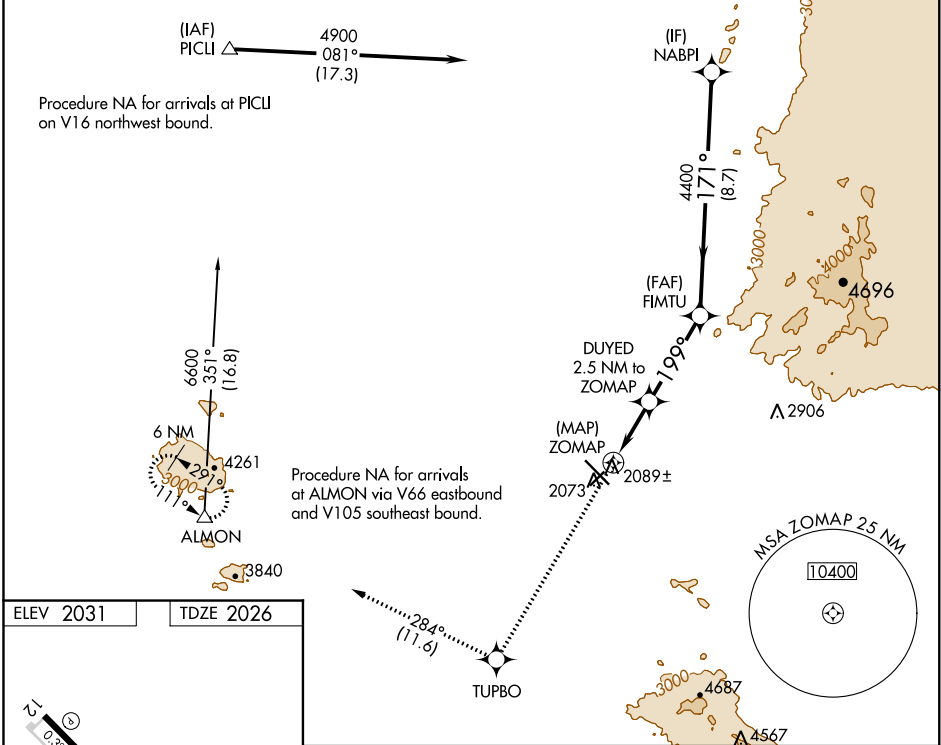
MARANA RGNL (AVQ)

RNP APCH.

Rwy 21 helicopter visibility reduction below 1 SM NA. When local altimeter setting not received, use Ryan Field altimeter setting and increase all MDAs 100 feet, increase LP Cat C visibility $\frac{1}{8}$ SM and increase LNAV Cat C visibility $\frac{1}{4}$ SM.

MISSED APPROACH: Climb to 6700 direct TUPBO and on track 284° to ALMON and hold, continue climb-in-hold 6700.

AWOS-3 118.375	TUCSON APP CON 119.4 318.1	UNICOM 123.0 (CTAF) 0
--------------------------	--------------------------------------	---------------------------------



ELEV 2031	TDZE 2026			6700		TUPBO	tr 284°	ALMON	VGSI and descent angles not coincident (VGSI Angle 3.00/TCH 40).		
								FIMTU	NABPI		
				ZOMAP		DUYED 2.5 NM to ZOMAP		TCH 40	4900		
				3120		4400		171°			
				0.5		2.5 NM		3.6 NM		8.7 NM	
CATEGORY	A		B		C		D				
LP MDA	2340-1		314 (400-1)				NA				
LNAV MDA	2640-1		614 (700-1)		2640-1 $\frac{3}{4}$		614 (700-1 $\frac{3}{4}$)		NA		

SW-4, 10 OCT 2019 to 07 NOV 2019

SW-4, 10 OCT 2019 to 07 NOV 2019