

WAAS CH 40308 W16A	APP CRS 156°	Rwy Idg TDZE Apt Elev	3998 686 686
--	------------------------	-----------------------------	---

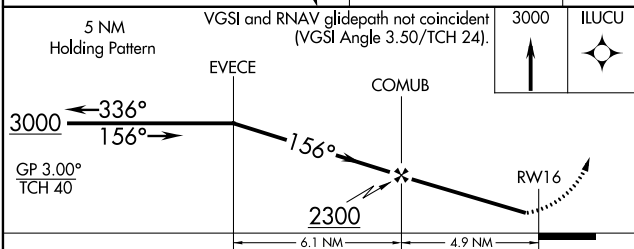
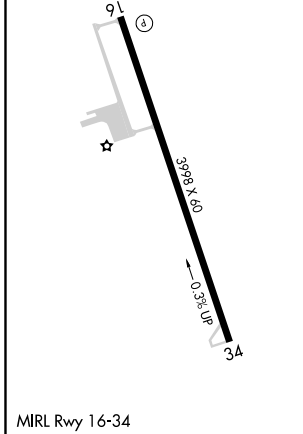
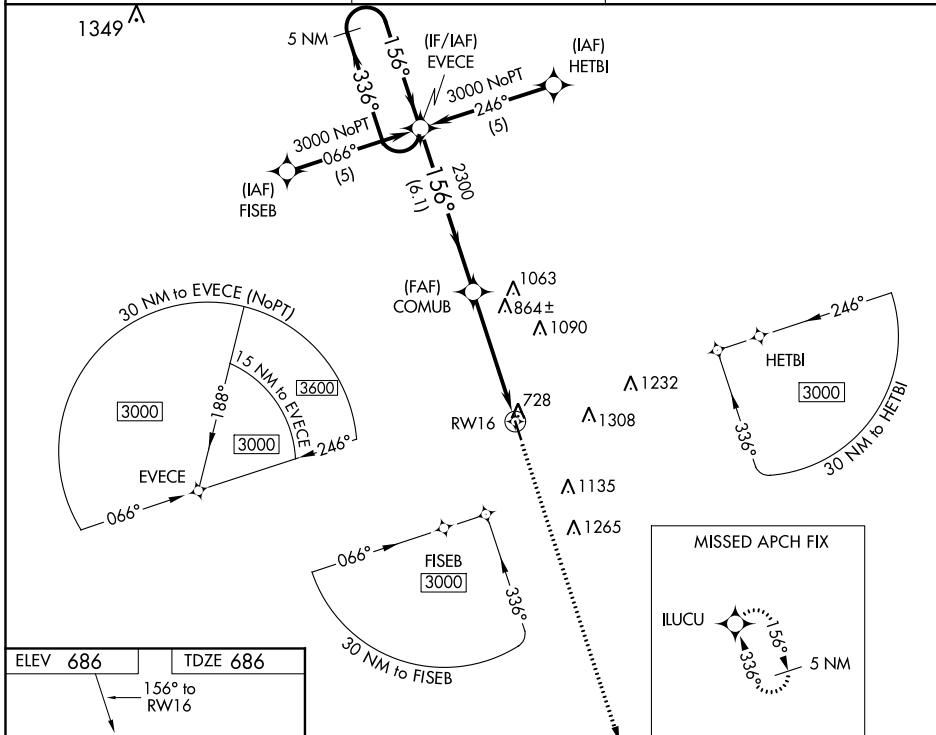
RNAV (GPS) RWY 16

HILLSBORO MUNI (INJ)

▼ Baro-VNAV NA when using Cleburne Rgnl altimeter setting. DME/DME RNP-0.3 NA. For uncompensated BARO-VNAV systems, LNAV/VNAV NA below -16°C (4°F) or above 54°C (130°F).
 ▲ Visibility reduction by helicopters NA. When local altimeter setting not received use Cleburne Rgnl altimeter setting and increase all DA/MDA 80 feet, increase LPV and LNAV/VNAV visibility ¼ mile all Cats.

MISSED APPROACH:
Climb to 3000 direct ILUCU and hold.

AWOS-3 118.725	WACO APP CON 127.65 352.0	CTAF 122.9
--------------------------	-------------------------------------	----------------------



CATEGORY	A	B	C	D
LPV DA	936-1	250 (300-1)		NA
LNAV/VNAV DA	1128-1½	442 (500-1½)		NA
LNAV MDA	1120-1	434 (500-1)		NA
CIRCLING	1180-1 494 (500-1)	1200-1 514 (600-1)		NA

SC-2, 10 OCT 2019 to 07 NOV 2019

SC-2, 10 OCT 2019 to 07 NOV 2019