

APP CRS 267°	Rwy Idg 2627
	TDZE 545
	Apt Elev 545

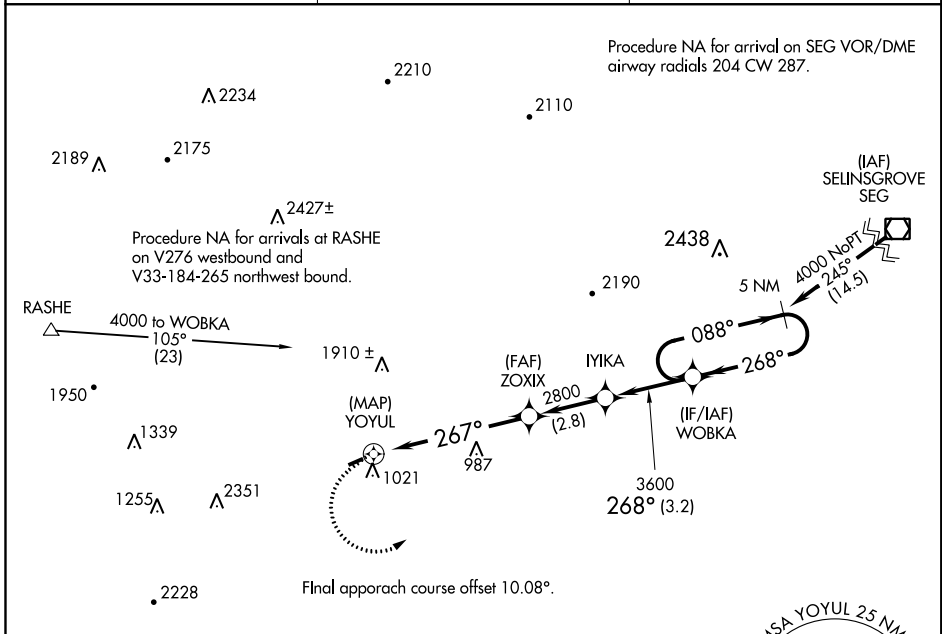
RNAV (GPS) RWY 26

MIFFLINTOWN (P34)

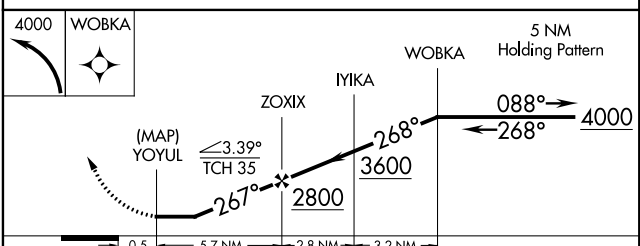
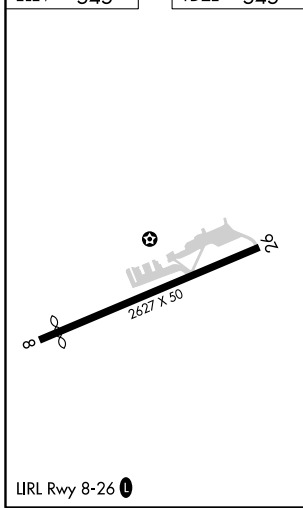
▼ Rwy 26 helicopter visibility reduction below 1 SM NA. DME/DME RNP-0.3 NA.
▲ NA Procedure NA at night. Use Penn Valley altimeter setting, if not received, use Reedsville altimeter setting and increase all MDAs 240 feet.

MISSED APPROACH: Climbing left turn to 4000 direct WOBKA and hold.

SEG ASOS 123.975	NEW YORK APP CON 134.8 338.3	UNICOM 122.8 (CTAF)
----------------------------	--	-------------------------------



ELEV 545	TDZE 545
----------	----------



CATEGORY	A	B	C	D
LNAV MDA	1440-1¼	895 (900-1¼)	NA	
CIRCLING	1560-1¼ 1015 (1100-1¼)	1640-1½ 1095 (1100-1½)	NA	

NE-4, 10 OCT 2019 to 07 NOV 2019

NE-4, 10 OCT 2019 to 07 NOV 2019