

(BLTWY6.BLTWY) 19115

BLTWY SIX DEPARTURE (RNAV)

AL-10328 (FAA)

HOUSTON EXECUTIVE (TME)
HOUSTON, TEXAS

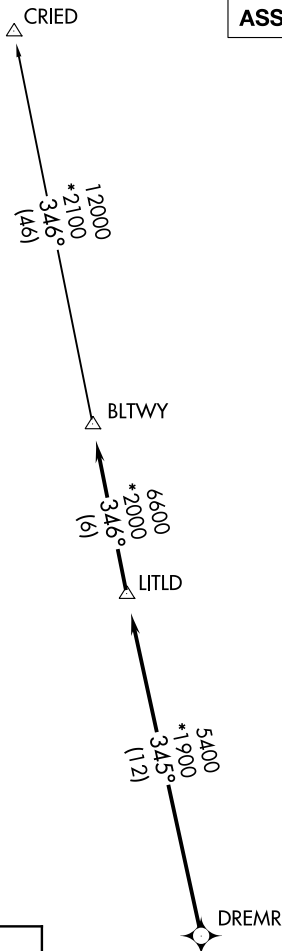
ATIS
119.525
CLNC DEL
132.075
EXECUTIVE TOWER *
126.975 (CTAF)
HOUSTON DEP CON
123.8 257.7

**TOP ALTITUDE:
ASSIGNED BY ATC**

NOTE: RADAR required.
NOTE: DME/DME/IRU or GPS required.
NOTE: RNAV 1.

TAKEOFF MINIMUMS

Rwy 18, 36: Standard with minimum climb of 500' per NM to 680.



DEPARTURE ROUTE DESCRIPTION

TAKEOFF RWY 18: Climb heading 175° to 680 for RADAR vectors to DREMR, thence . . .

TAKEOFF RWY 36: Climb heading 355° to 680 for RADAR vectors to DREMR, thence . . .

...on track 345° to LITLD, then on track 346° to BLTWY, then on (transition). Maintain ATC assigned altitude. Expect filed altitude 10 minutes after departure.

CRIED TRANSITION (BLTWY6.CRIED)



NOTE: Chart not to scale.

BLTWY SIX DEPARTURE (RNAV)

(BLTWY6.BLTWY) 25APR19

HOUSTON, TEXAS
HOUSTON EXECUTIVE (TME)

SC-5, 10 OCT 2019 to 07 NOV 2019

SC-5, 10 OCT 2019 to 07 NOV 2019