

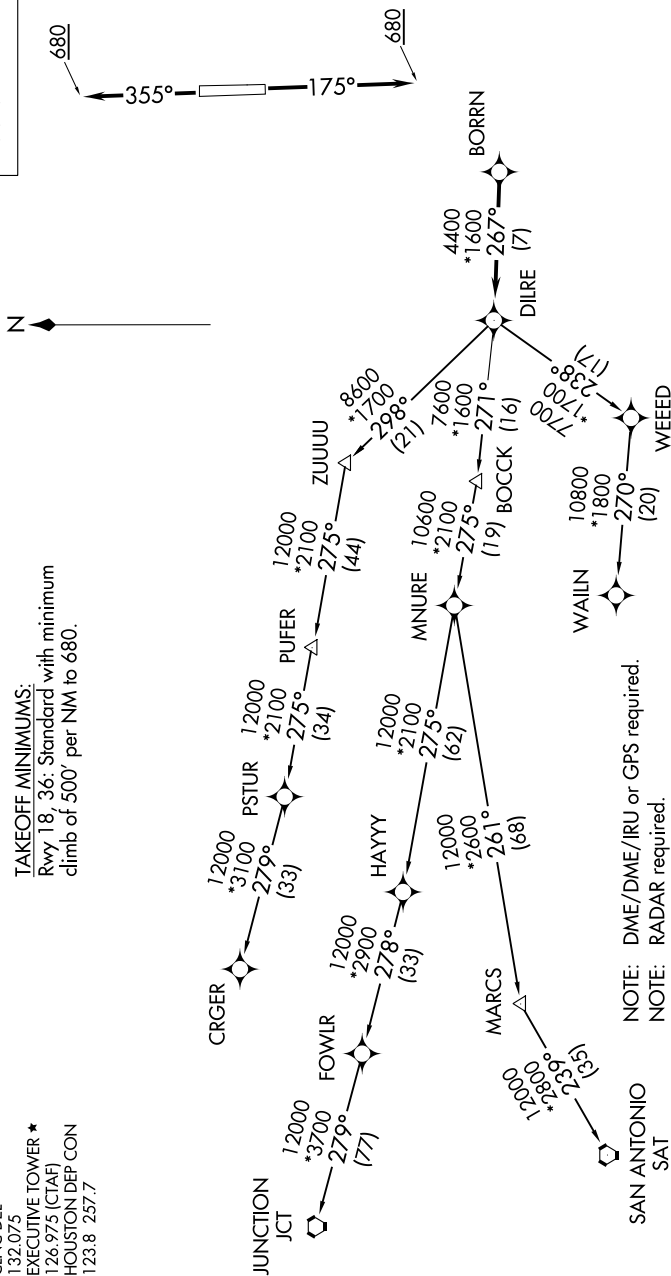
BORRN FOUR DEPARTURE (RNAV)

SC-5, 10 OCT 2019 to 07 NOV 2019

ATIS 119.525  
CLNC DEL 132.075  
EXECUTIVE TOWER \* 126.975 (CTAF)  
HOUSTON DEP CON 123.8 257.7

TAKEOFF MINIMUMS:  
Rwy 18, 36: Standard with minimum  
climb of 500' per NM to 680.

TOP ALTITUDE:  
ASSIGNED BY ATC



NOTE: DME/DME/IRU or GPS required.  
NOTE: RADAR required.  
NOTE: RNAV 1.  
NOTE: CRGR TRANSITION ATC assigned only  
for aircraft departing 54T, AXH, EFD, GLS,  
HPY, IWS, LBX, LVJ, SGR, TME, T00, T41.

(NARRATIVE ON FOLLOWING PAGE)

NOTE: Chart not to scale.

SC-5, 10 OCT 2019 to 07 NOV 2019

BORRN FOUR DEPARTURE (RNAV)