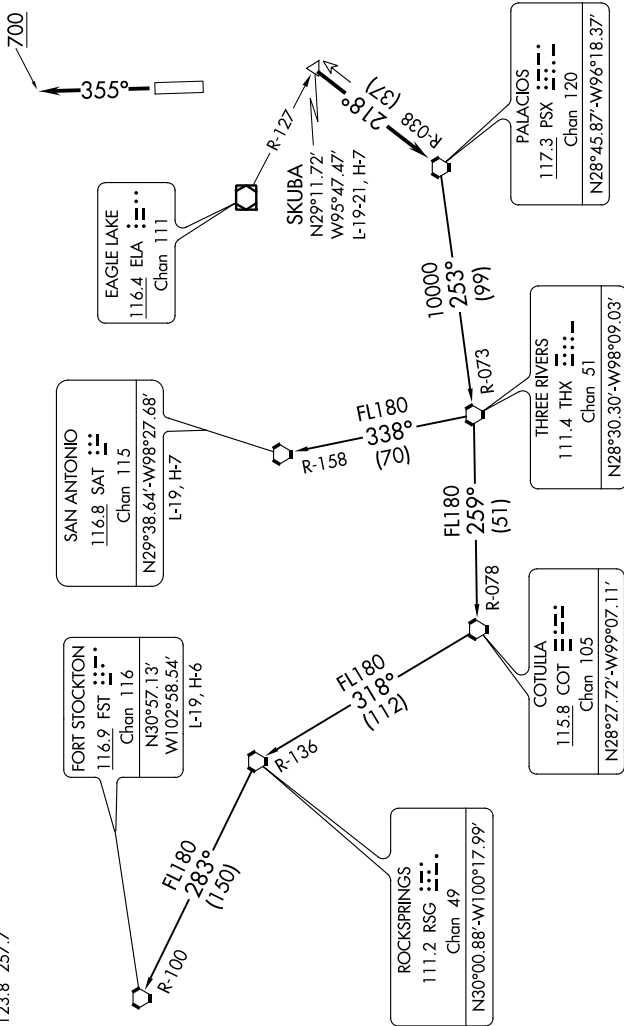


TOP ALTITUDE:
ASSIGNED BY ATC

SC-5, 10 OCT 2019 to 07 NOV 2019

ATIS 119.525
CLNC DEL 132.075
GND CON 132.075
EXECUTIVE TOWER ★ 126.975 (CTAF)
HOUSTON DEP CON 123.8 257.7

TAKEOFF MINIMUMS
Rwy 18, 36: Standard.



(NARRATIVE ON FOLLOWING PAGE)

SC-5, 10 OCT 2019 to 07 NOV 2019

NOTE: RADAR required.
NOTE: Chart not to scale.