

| | | |
|--|------------------------|---|
| WAAS CH 49004 W18A | APP CRS 175° | Rwy Idg 6610 TDZE 166 Apt Elev 166 |
|--|------------------------|---|

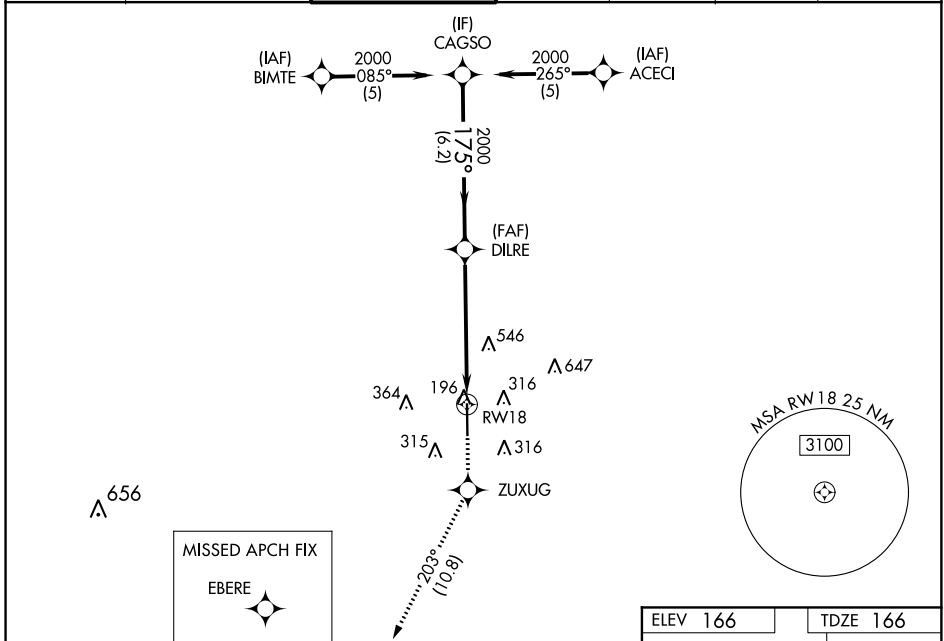
RNAV (GPS) RWY 18

HOUSTON EXECUTIVE (TME)

▽ Baro-VNAV NA when using David Wayne Hooks Memorial altimeter setting. For uncompensated Baro-VNAV systems, LNAV/VNAV NA below -15°C (5°F) or above 48°C (118°F). DME/DME RNP-0.3 NA. VDP NA when using David Wayne Hooks Memorial altimeter setting. Helicopter visibility reduction below ¼ SM NA. When local altimeter setting not received, use David Wayne Hooks Memorial altimeter setting and increase all DA 57 feet and all MDA 60 feet; increase LNAV/VNAV all Cats and LNAV Cat C/D visibility ½ mile, and Circling Cat C/D visibility ¼ mile.

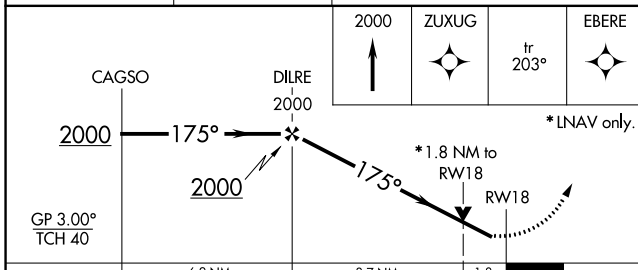
MISSED APPROACH: Climb to 2000 direct ZUXUG and on track 203° to EBERE and hold.

| | | | | | | |
|------------------------|---------------------------------------|--|---------------------------|----------------------------|-----------------------|--------------------------|
| ATIS 119.525 | HOUSTON APP CON 123.8 257.7 | EXECUTIVE TOWER ★ 126.975 (CTAF) 0 | GND CON 132.075 | CLNC DEL 132.075 | GCO 121.725 | UNICOM 122.975 |
|------------------------|---------------------------------------|--|---------------------------|----------------------------|-----------------------|--------------------------|



SC-5, 10 OCT 2019 to 07 NOV 2019

SC-5, 10 OCT 2019 to 07 NOV 2019



| | |
|--|----------|
| ELEV 166 | TDZE 166 |
| | |
| REIL Rwy 18-36 0 MIRL Rwy 18-36 0 | |