

(STYCK7.STYCK) 19115

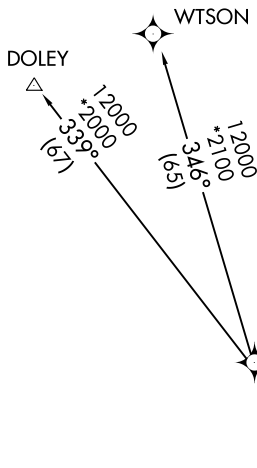
AL-10328 (FAA)

HOUSTON EXECUTIVE (TME)

STYCK SEVEN DEPARTURE (RNAV)

HOUSTON, TEXAS

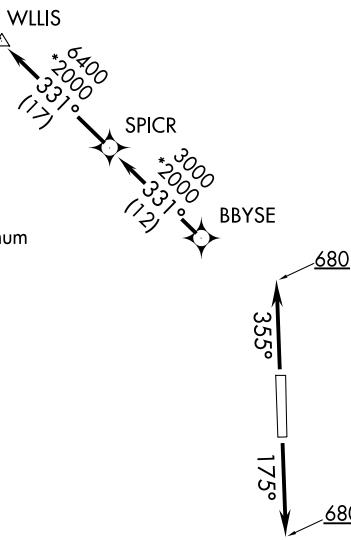
**TOP ALTITUDE:
ASSIGNED BY ATC**



- ATIS 119.525
- CLNC DEL 132.075
- GND CON 132.075
- EXECUTIVE TOWER ★ 126.975 (CTAF)
- HOUSTON DEP CON 123.8 257.7

NOTE: RADAR required.
 NOTE: DME/DME/IRU or GPS required.
 NOTE: RNAV 1.

TAKEOFF MINIMUMS
 Rwys 18, 36: Standard with minimum climb of 500' per NM to 680.



NOTE: Chart not to scale.

DEPARTURE ROUTE DESCRIPTION

TAKEOFF RWY 18: Climb heading 175° to 680 for RADAR vectors to BBYSE, thence. . .

TAKEOFF RWY 36: Climb heading 355° to 680 for RADAR vectors to BBYSE, thence. . .

. . . on track 331° to SPICR, then on track 331° to WLLIS, then on track 332° to STYCK, then on (transition). Maintain ATC assigned altitude. Expect filed altitude 10 minutes after departure.

DOLEY TRANSITION (STYCK7.DOLEY)

WTSON TRANSITION (STYCK7.WTSON)

STYCK SEVEN DEPARTURE (RNAV)

(STYCK7.STYCK) 25APR19

HOUSTON, TEXAS

HOUSTON EXECUTIVE (TME)

SC-5, 10 OCT 2019 to 07 NOV 2019

SC-5, 10 OCT 2019 to 07 NOV 2019