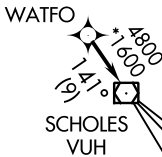
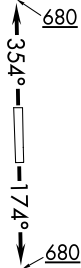


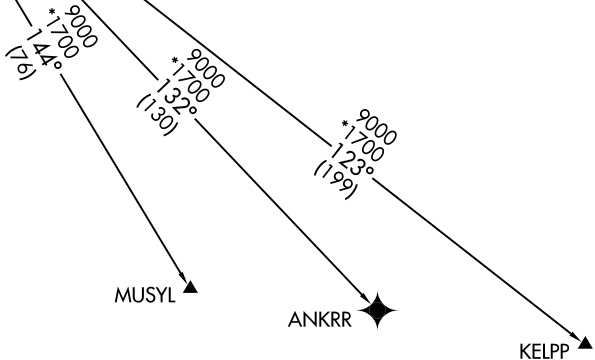
WATFO FIVE DEPARTURE (RNAV)

**TOP ALTITUDE:
ASSIGNED BY ATC**

ATIS
119.525
CTAF
126.975
CLNC DEL
132.075
HOUSTON DEP CON
123.8 257.7



TAKEOFF MINIMUMS:
Rwy 18, 36: Standard with minimum climb of 500' per NM to 680.



NOTE: GPS required.
NOTE: RADAR required.
NOTE: RNAV 1.

NOTE: Chart not to scale.

DEPARTURE ROUTE DESCRIPTION

TAKEOFF RWY 18: Climb on heading 174° to 680, for RADAR vectors to WATFO, thence. . . .

TAKEOFF RWY 36: Climb on heading 354° to 680, for RADAR vectors to WATFO, thence. . . .

. . . . on track 141° to VUH VOR/DME, then on (transition). Maintain ATC assigned altitude. Expect filed altitude 10 minutes after departure.

ANKRR TRANSITION (WATFO5.ANKRR)

KELPP TRANSITION (WATFO5.KELPP)

MUSYL TRANSITION (WATFO5.MUSYL)

WATFO FIVE DEPARTURE (RNAV)