

WYLSN SEVEN DEPARTURE (RNAV)

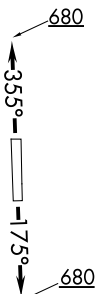
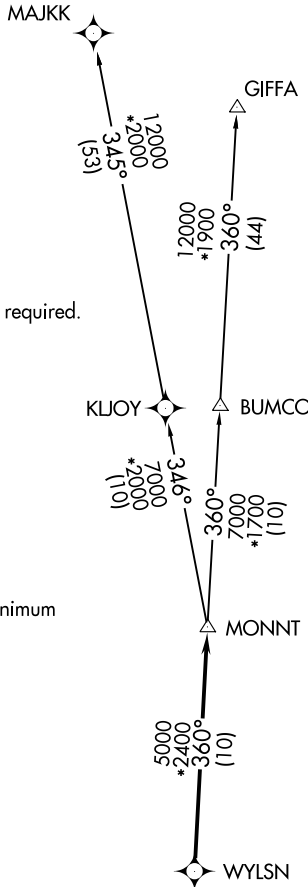
ATIS
 119.525
 CLNC DEL
 132.075
 CTAF
 126.975
 HOUSTON DEP CON
 123.8 257.7

**TOP ALTITUDE:
 ASSIGNED BY ATC**

NOTE: RADAR required.
 NOTE: DME/DME/IRU or GPS required.
 NOTE: RNAV 1.

TAKEOFF MINIMUMS

Rwy 18, 36: Standard with minimum climb of 500' per NM to 680.



DEPARTURE ROUTE DESCRIPTION

TAKEOFF RWY 18: Climb on heading 175° to 680 for RADAR vectors to WYLSN, then...
TAKEOFF RWY 36: Climb on heading 355° to 680 for RADAR vectors to WYLSN, then...
 ...on track 360° to MONNT, then on (transition).
 Maintain ATC assigned altitude. Expect filed altitude 10 minutes after departure.

GIFFA TRANSITION (WYLSN7.GIFFA)
MAJJK TRANSITION (WYLSN7.MAJKK)

NOTE: Chart not to scale.

SC-5, 10 OCT 2019 to 07 NOV 2019

SC-5, 10 OCT 2019 to 07 NOV 2019