

WAAS CH 99720 W13A	APP CRS 131°	Rwy Idg 5505 TDZE 1289 Apt Elev 1289
--	------------------------	--

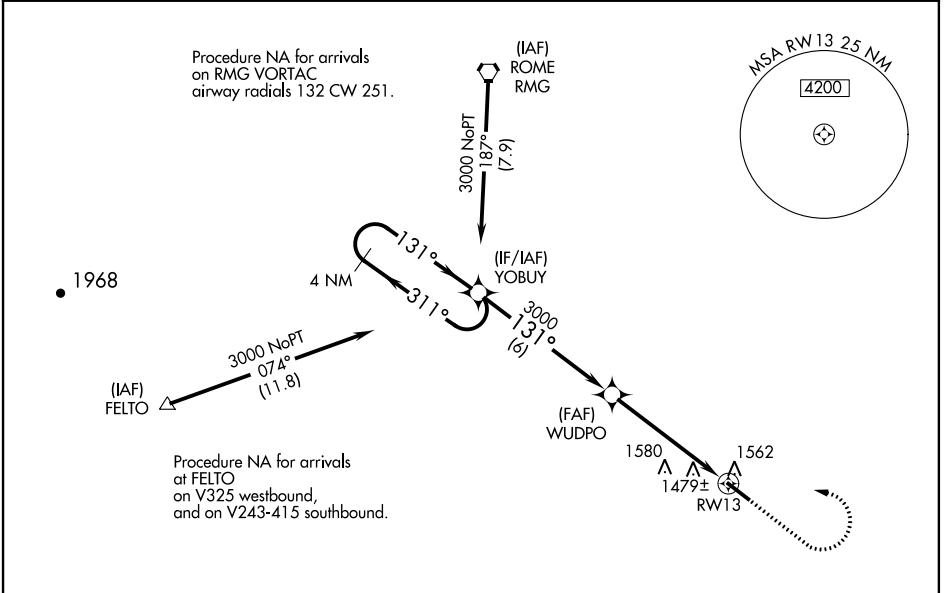
RNAV (GPS) RWY 13

PAULDING NORTHWEST ATLANTA (PUJ)

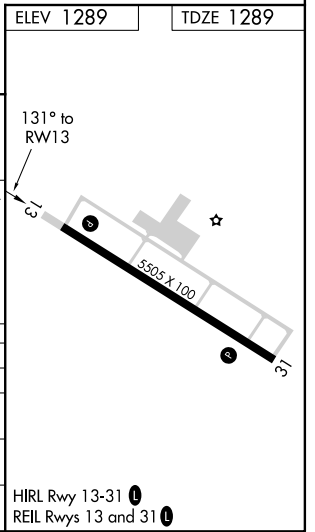
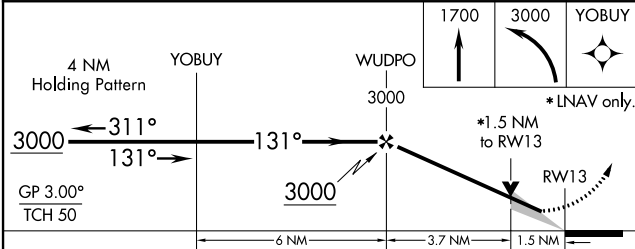
NA Baro-VNAV NA when using Cartersville altimeter setting. For uncompensated Baro-VNAV systems, LNAV/VNAV NA below -17°C (2°F) or above 35°C (95°F). DME/DME RNP-0.3 NA. When local altimeter setting not received, use Cartersville altimeter setting and increase all DA 106 feet and all MDA 120 feet; increase LPV all Cats and LNAV Cats C/D visibilities $\frac{3}{8}$ mile, increase LNAV/VNAV all Cats and Circling Cats C/D visibilities $\frac{1}{2}$ mile. VDP NA with Cartersville altimeter setting.

MISSED APPROACH: Climb to 1700 then climbing left turn to 3000 direct YOBUY and hold.

AWOS-3 126,225	ATLANTA APP CON 121.0 268.7	UNICOM 123,075 (CTAF)
--------------------------	---------------------------------------	---------------------------------



ELEV 1289	TDZE 1289
-----------	-----------



CATEGORY	A	B	C	D
LPV DA		1539- $\frac{3}{4}$	250 (300- $\frac{3}{4}$)	
LNAV/VNAV DA		1797-1 $\frac{3}{4}$	508 (600-1 $\frac{3}{4}$)	
LNAV MDA	1820-1	531 (600-1)	1820-1 $\frac{1}{2}$	531 (600-1 $\frac{1}{2}$)
CIRCLING	1880-1	591 (600-1)	1880-1 $\frac{1}{2}$ 591 (600-1 $\frac{1}{2}$)	1940-2 651 (700-2)

SE-4, 10 OCT 2019 to 07 NOV 2019

SE-4, 10 OCT 2019 to 07 NOV 2019