

WAAS CH <b>99511</b> <b>W31A</b>	APP CRS <b>311°</b>	Rwy Idg TDZE Apt Elev	<b>5505</b> <b>1283</b> <b>1289</b>
--	------------------------	-----------------------------	---

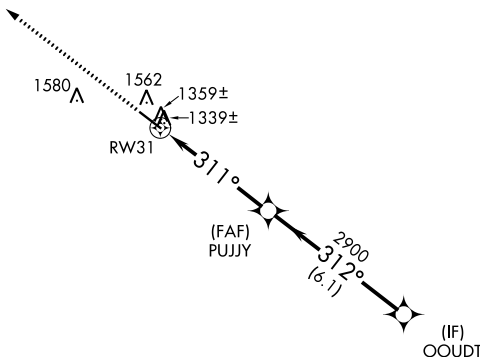
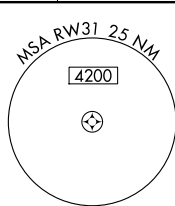
**RNAV (GPS) RWY 31**  
PAULDING NORTHWEST ATLANTA (PUJ)

**⚠** For uncompensated Baro-VNAV systems, LNAV/VNAV NA below -17°C (2°F) or above 46°C (114°F). DME/DME RNP-0.3 NA. When local altimeter setting not received, use Cartersville altimeter setting and increase all DA 106 feet and all MDA 120 feet and LPV all Cats and LNAV/VNAV all Cats and LNAV Cat C/D visibilities ½ mile and Circling Cat C/D visibilities ½ mile. Baro-VNAV and VDP NA when using Cartersville altimeter setting.

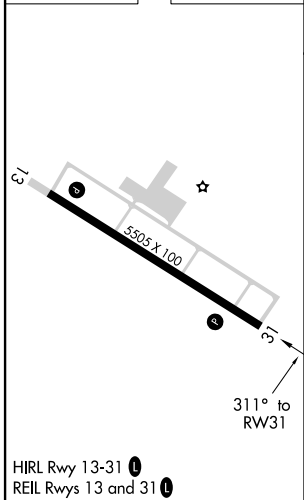
**MISSED APPROACH:** Climb to 3000 direct YOBUY and hold.

AWOS-3 <b>126.225</b>	ATLANTA APP CON <b>121.0 268.7</b>	UNICOM <b>123.075 (CTAF) 0</b>
--------------------------	---------------------------------------	-----------------------------------

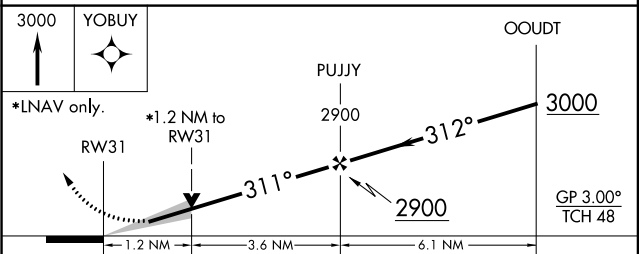
**RADAR REQUIRED**



ELEV 1289	TDZE 1283
-----------	-----------



HIRL Rwy 13-31 0  
REIL Rwys 13 and 31 0



CATEGORY	A	B	C	D
LPV DA	1483-3/4 200 (200-3/4)			
LNAV/VNAV DA	1635-1/4 352 (400-1/4)			
LNAV MDA	1720-1 437 (500-1)	1720-1 1/4 437 (500-1 1/4)	1720-1 1/2 437 (500-1 1/2)	1720-1 1/2 437 (500-1 1/2)
CIRCLING	1880-1 591 (600-1)	1880-1 1/2 591 (600-1 1/2)	1940-2 651 (700-2)	

SE-4, 10 OCT 2019 to 07 NOV 2019

SE-4, 10 OCT 2019 to 07 NOV 2019