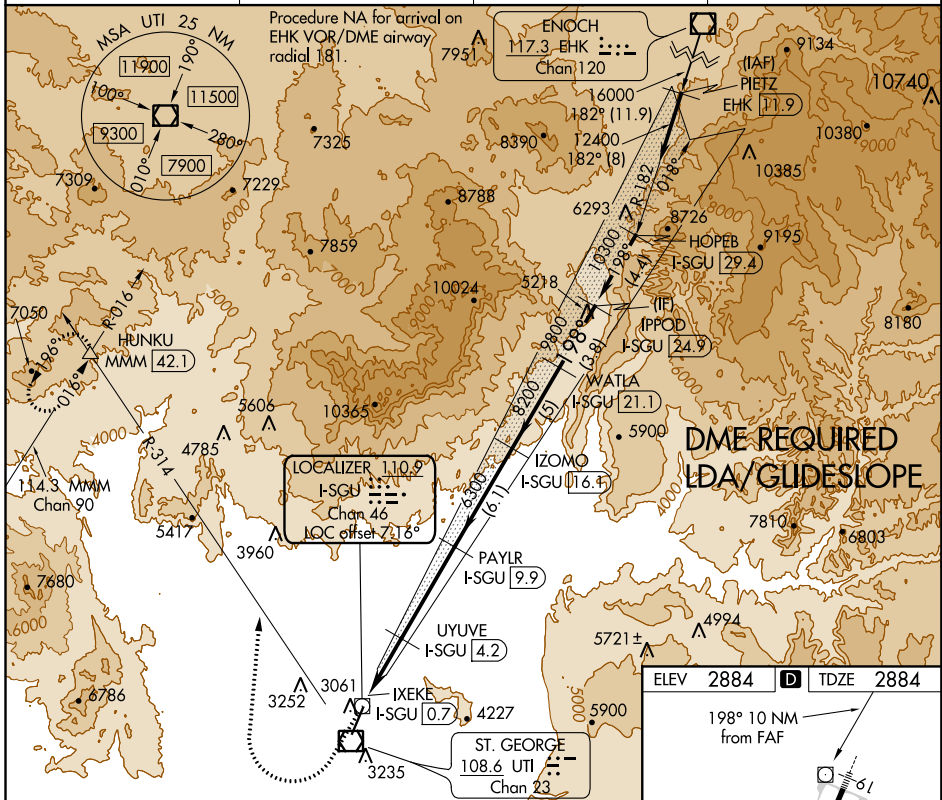


LOC/DME I-SGU <b>110.9</b> Chan <b>46</b>	APP CRS <b>198°</b>	Rwy ldg TDZE <b>2884</b> Apt Elev <b>2884</b>	<b>9300</b>
---	------------------------	--	-------------

**LDA RWY 19**  
ST GEORGE RGNL (SGU)

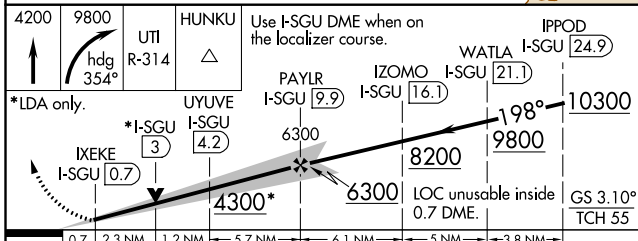
<p><b>V</b> DME required. For inop ALS, increase S-LDA/GS 19 all Cats visibility to 7/8 SM.</p> <p><b>NA</b> -17°C</p>	<p><b>MALSR</b></p>	<p><b>MISSED APPROACH:</b> Climb to 4200 then climbing right turn to 9800 on heading 354° and UTI VOR/DME R-314 to HUNKU INT/ MMM 42.1 DME and hold, continue climb-in-hold to 9800.</p>
--	---------------------	--

AWOS-3PT <b>135.075</b>	LOS ANGELES CENTER <b>124.2 343.6</b>	CLNC DEL <b>133.3</b>	UNICOM <b>122.8 (CTAF)</b>
----------------------------	--	--------------------------	-------------------------------

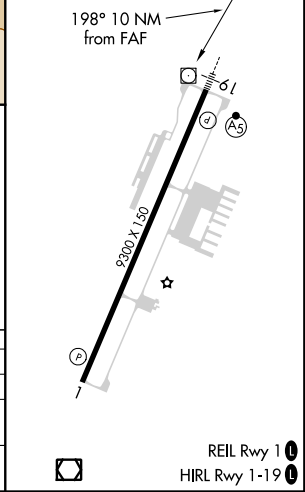


SW-4, 10 OCT 2019 to 07 NOV 2019

SW-4, 10 OCT 2019 to 07 NOV 2019



ELEV 2884	<b>D</b>	TDZE 2884
-----------	----------	-----------



CATEGORY	A	B	C	D
S-LDA/GS 19	3170-1/2		286 (300-1/2)	
S-LDA 19	3940-3/4 1056 (1100-3/4)	3940-1 1056 (1100-1)	3940-2 1/2 1056 (1100-2 1/2)	
CIRCLING	3940-1 1/4 1056 (1100-1 1/4)	3940-1 1/2 1056 (1100-1 1/2)	3940-3 1056 (1100-3)	