

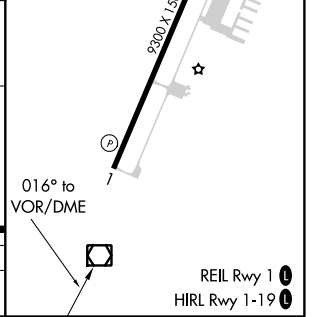
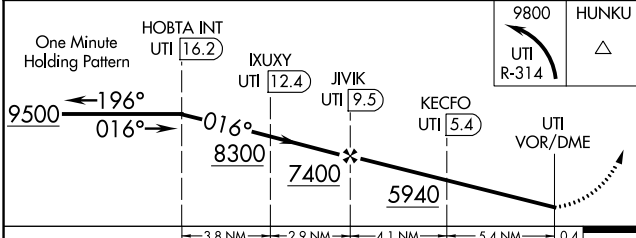
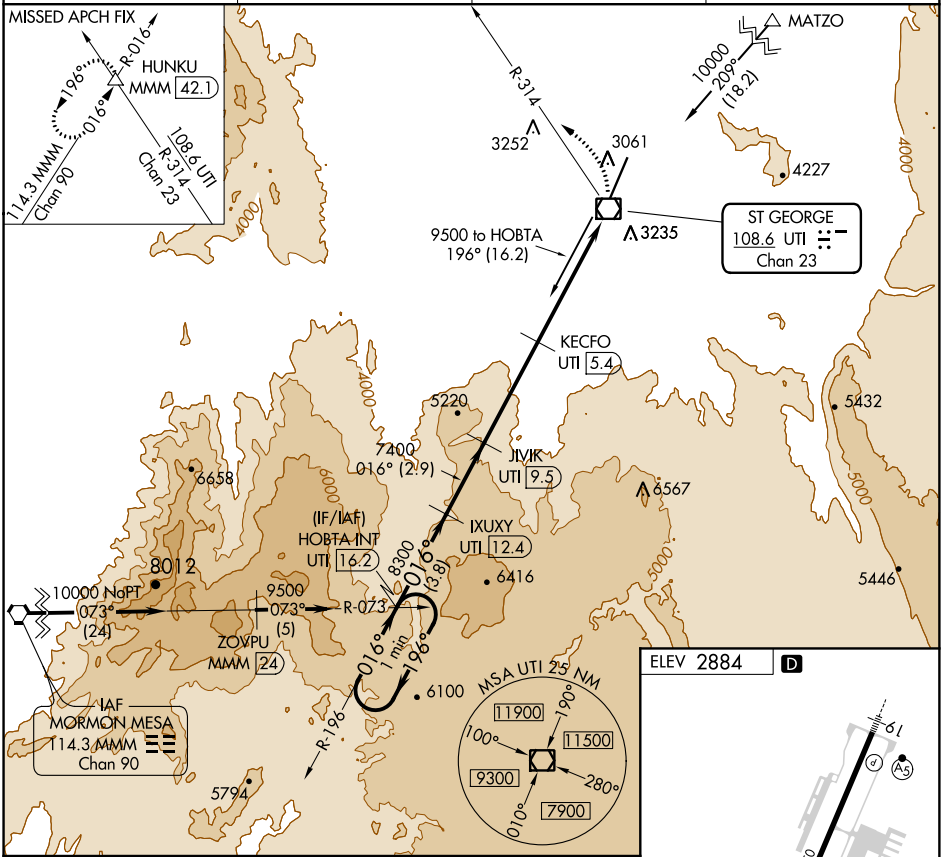
VOR/DME UTI <b>108.6</b> Chan <b>23</b>	APP CRS <b>016°</b>	Rwy Idg TDZE Apt Elev <b>2884</b>	N/A N/A 2884
---	------------------------	--	--------------------

**VOR/DME-A**  
ST GEORGE RGNL (SGU)

**⚠** Visibility reduction by helicopters NA.  
**❄** -17°C

MISSED APPROACH: Climbing left turn to 9800 on UTI VOR/DME R-314 to HUNKU INT/MMM 42.1 DME and hold, continue climb-in-hold to 9800.

AWOS-3PT <b>135.075</b>	LOS ANGELES CENTER <b>124.2 343.6</b>	CLNC DEL <b>133.3</b>	UNICOM <b>122.8 (CTAF)</b>
----------------------------	--	--------------------------	-------------------------------



CATEGORY	A	B	C	D
CIRCLING	3740-1 856 (900-1)	3760-1¼ 876 (900-1¼)	3760-2½ 876 (900-2½)	3860-3 976 (1000-3)

SW-4, 10 OCT 2019 to 07 NOV 2019

SW-4, 10 OCT 2019 to 07 NOV 2019