

APP CRS	Rwy Idg	<b>1899</b>
<b>248°</b>	TDZE	<b>547</b>
	Apt Elev	<b>550</b>

# RNAV (GPS) RWY 25

KELLER BROTHERS (Ø8N)

RNP APCH.

**▼** Procedure NA at night. Rwy 7 helicopter visibility reduction below 1 SM NA. Use Lancaster altimeter setting; when not received, use Reading altimeter setting and increase all MDA 40 feet and Circling Cat B visibility ¼ mile.

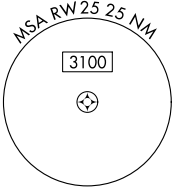
**▲NA**

MISSED APPROACH: Climbing right turn to 3000 direct BAARN and hold.

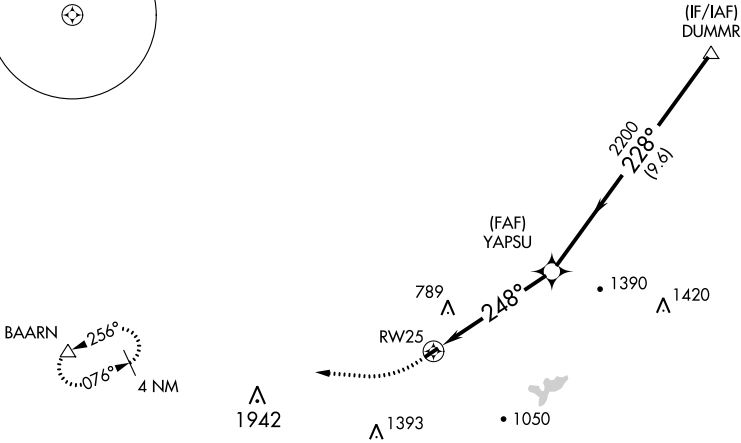
LANCASTER ASOS  
**125.675**

HARRISBURG APP CON  
**126.45 281.525**

CTAF  
**122.9**



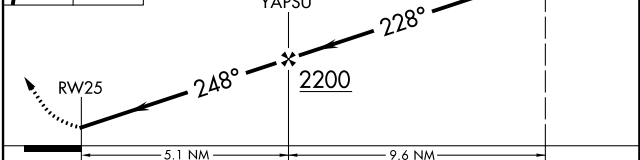
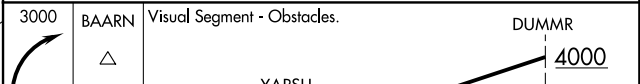
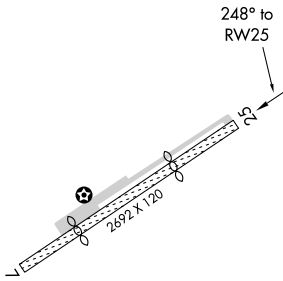
Procedure NA for arrivals at DUMMR on V93 northeast bound, V162 eastbound and V276 southeast bound.



NE-4, 10 OCT 2019 to 07 NOV 2019

NE-4, 10 OCT 2019 to 07 NOV 2019

ELEV 550	TDZE 547
----------	----------



CATEGORY	A	B	C	D
RNAV MDA	1320-1 773 (800-1)	1320-1¼ 773 (800-1¼)	NA	
CIRCLING	1440-1¼ 890 (900-1¼)	1480-1¼ 930 (1000-1¼)	NA	

LIRL Rwy 7-25