

WAAS CH <b>62840</b> <b>W17A</b>	APP CRS <b>171°</b>	Rwy Idg TDZE Apt Elev	<b>5943</b> <b>693</b> <b>693</b>
--	------------------------	-----------------------------	---

# RNAV (GPS) RWY 17

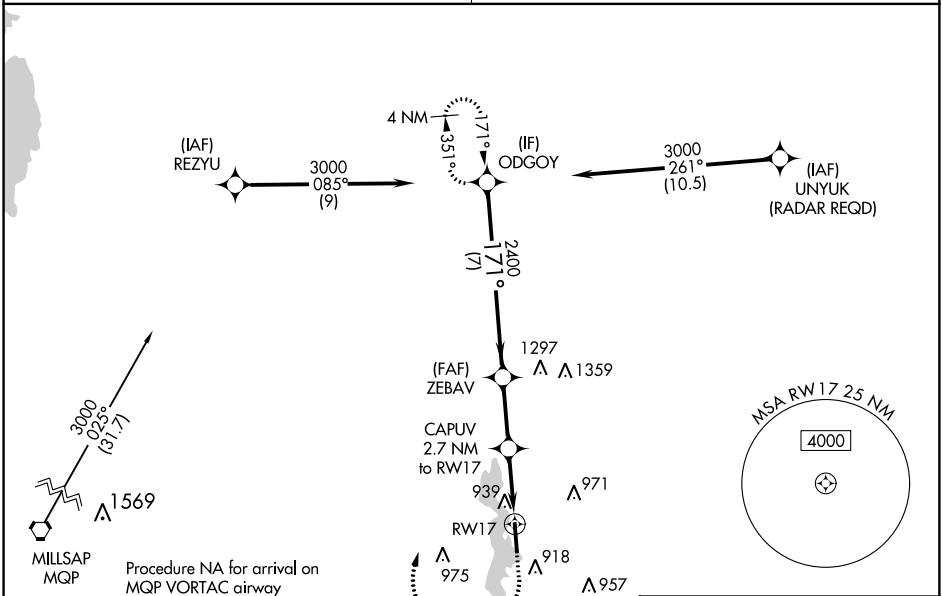
KENNETH COPELAND (4T2)

For uncompensated Baro-VNAV systems, LNAV/VNAV NA below -16°C (4°F) or above 54°C (130°F). Baro-VNAV and VDP NA when using Fort Worth Meacham Intl altimeter setting. DME/DME RNP-0.3 NA. Rwy 17 helicopter visibility reduction below 3/4 SM NA. When local altimeter setting not received use Fort Worth Meacham Intl altimeter setting and increase LPV DA to 973; LNAV/VNAV DA to 1135 and all visibilities to 1 1/2 SM; increase all MDA 40 feet, increase LNAV Cat C/D visibility to 1 3/8 SM and Circling Cat C visibility to 1 3/4 SM.

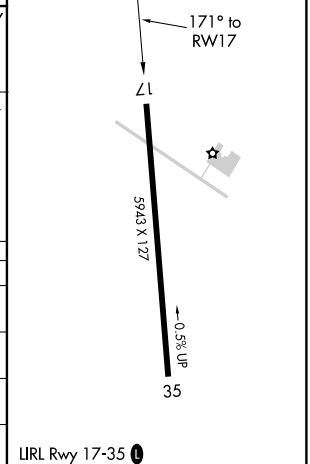
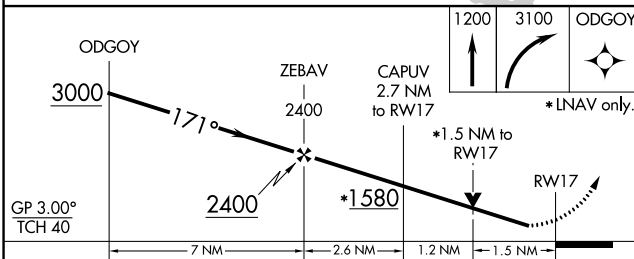
MISSED APPROACH: Climb to 1200 then climbing right turn to 3100 direct ODGOY and hold.

FORT WORTH CENTER  
**134.4 380.3**

UNICOM  
**123.075 (CTAF)**



ELEV 693	TDZE 693
----------	----------



CATEGORY	A	B	C	D
LPV DA	943-1		250 (300-1)	
LNAV/VNAV DA	1105-1 3/8		412 (500-1 3/8)	
LNAV MDA	1200-1 507 (600-1)		1200-1 3/8 507 (600-1 3/8)	
CIRCLING	1240-1 547 (600-1)		1280-1 1/2 587 (600-1 1/2) 1440-2 1/2 747 (800-2 1/2)	

LIRL Rwy 17-35

SC-2, 10 OCT 2019 to 07 NOV 2019

SC-2, 10 OCT 2019 to 07 NOV 2019