

WAAS CH <b>57940</b> <b>W35A</b>	APP CRS <b>351°</b>	Rwy Idg <b>5943</b>
		TDZE <b>675</b>
		Apt Elev <b>693</b>

# RNAV (GPS) RWY 35

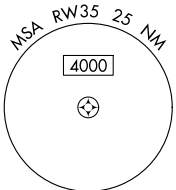
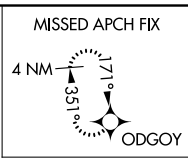
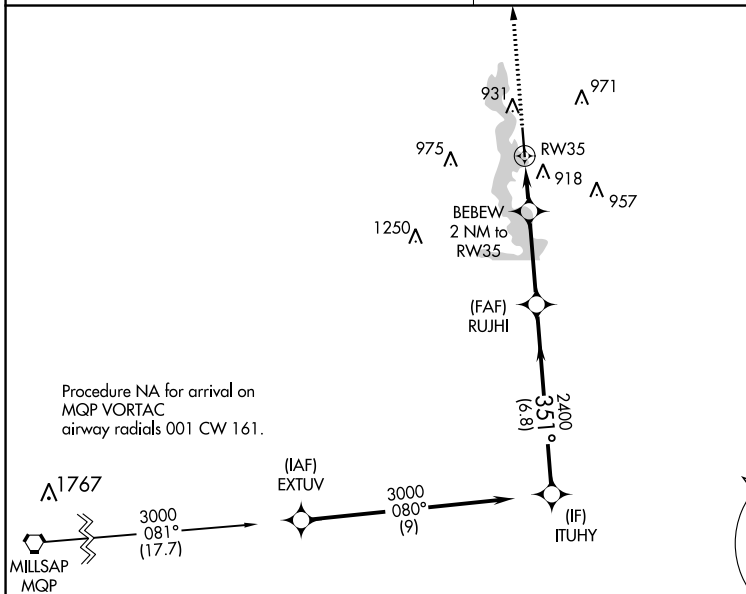
KENNETH COPELAND (4T2)

**NA** For uncompensated Baro-VNAV systems, LNAV/VNAV NA below -16°C (4°F) or above 54°C (130°F). Baro-VNAV and VDP NA when using Fort Worth Meacham Intl altimeter setting. DME/DME RNP-0.3 NA. Rwy 35 helicopter visibility reduction below 3/4 SM NA. When local altimeter setting not received use Fort Worth Meacham Intl altimeter setting and increase LPV DA to 955; LNAV/VNAV DA to 1144 and all visibilities to 1 1/2 SM; increase all MDA 40 feet, increase LNAV Cat C/D visibility to 1 1/2 SM and Circling Cat C visibility to 1 1/2 SM.

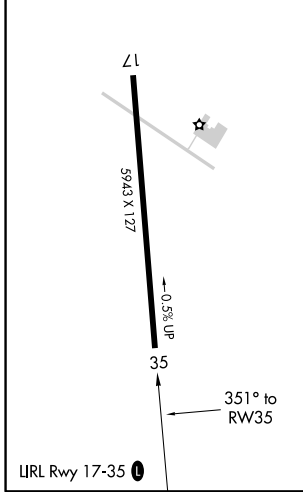
**MISSED APPROACH:**  
Climb to 3100 direct ODGOY and hold.

FORT WORTH CENTER  
**134.4 380.3**

UNICOM  
**123.075 (CTAF)**



ELEV 693	TDZE 675
----------	----------



3100	ODGOY	ITUHY		
*LNAV only.	BEBEW 2 NM to RW35	RUJHI 2400		
RW35	*1.5 NM to RW35	*1320		
1.5 NM	0.5 NM	3.3 NM		
351°	2400	3000		
		GP 3.00°		
		TCH 40		
6.8 NM				
CATEGORY	A	B	C	D
LPV DA	925-1 250 (300-1)			
LNAV/VNAV DA	1114-1 1/2 439 (500-1 1/2)			
LNAV MDA	1180-1	505 (500-1)	1180-1 3/8	505 (500-1 3/8)
CIRCLING	1240-1	547 (600-1)	1280-1 1/2	1440-2 1/2
			587 (600-1 1/2)	747 (800-2 1/2)

SC-2, 10 OCT 2019 to 07 NOV 2019

SC-2, 10 OCT 2019 to 07 NOV 2019