

LOC I-SAC 110.3	APP CRS 019°	Rwy Idg TDZE Apt Elev	5503 21 24
---------------------------	------------------------	-----------------------------	---------------------------------------

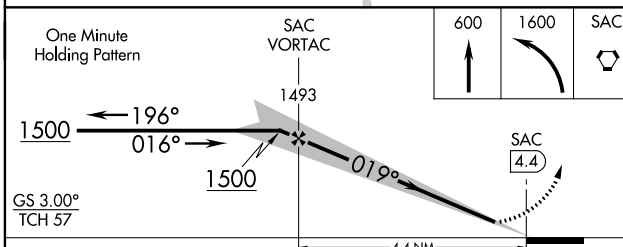
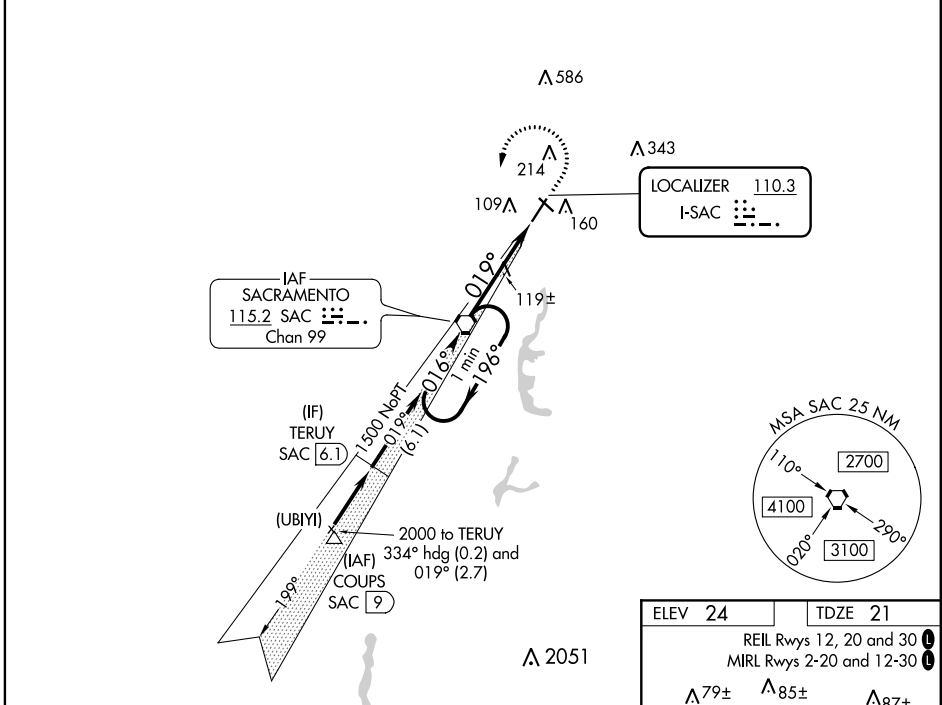
ILS or LOC RWY 2
SACRAMENTO EXECUTIVE (SAC)

⚠ When local altimeter setting not received, use Sacramento Intl altimeter setting and increase DA to 322, increase all MDA 40 feet. Autopilot coupled approach NA below 335 feet. For inop MALSRL, increase S-ILS 2 all Cats visibility to 7/8 SM and S-LOC 2 Cat C/D visibility to 1 SM. For inop MALSRL when using Sacramento Intl altimeter setting, increase S-ILS 2 all Cats visibility to 7/8 SM.

MALSRL

MISSED APPROACH:
Climb to 600 then climbing left turn to 1600 direct SAC VORTAC and hold.

ATIS 125.5	NORCAL APP CON 125.25 257.9	EXEC TOWER ★ 119.5 (CTAF) 278.8	GND CON 125.0	UNICOM 122.95
----------------------	---------------------------------------	---	-------------------------	-------------------------



ELEV 24	TDZE 21
REIL Rwy 12, 20 and 30	
MIRL Rwy 2-20 and 12-30	
Λ 79±	Λ 85±
Λ 87±	

TWR 94

183

61±

76±

100±

61±

3527 X 100

5003 X 150

019° 4.4 NM from FAF

FAF to MAP 4.4 NM

Knots	60	90	120	150	180
Min:Sec	4:24	2:56	2:12	1:46	1:28

CATEGORY	A	B	C	D
S-ILS 2	294-1/2 273 (300-1/2)			
S-LOC 2	380-1/2	359 (400-1/2)	380-5/8	359 (400-5/8)
CIRCLING	500-1 476 (500-1)	520-1 496 (500-1)	520-1 1/2 496 (500-1 1/2)	580-2 556 (600-2)

SW-2, 27 FEB 2020 to 26 MAR 2020

SW-2, 27 FEB 2020 to 26 MAR 2020