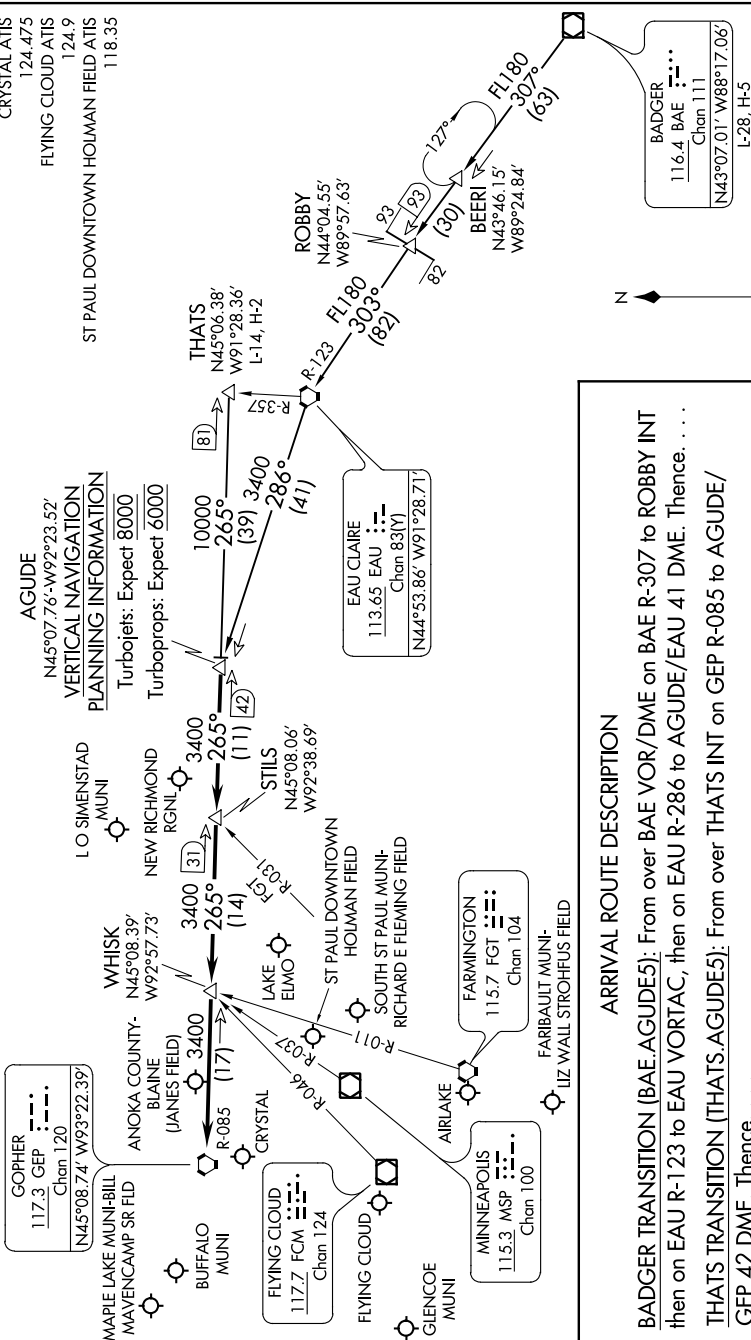


# AGUDE FIVE ARRIVAL

NC-1, 26 MAR 2020 to 23 APR 2020

MINNEAPOLIS APP CON  
 121.2 335.5  
 ANOKA COUNTY BLAINE (JANES FIELD) ATIS  
 120.625  
 CRYSTAL ATIS  
 124.475  
 FLYING CLOUD ATIS  
 124.9  
 ST PAUL DOWNTOWN HOLMAN FIELD ATIS  
 118.35

**AGUDE**  
 N45°07.76'-W92°23.52'  
**VERTICAL NAVIGATION**  
 Turbotojets: Expect 8000  
 Turboprops: Expect 6000



**ARRIVAL ROUTE DESCRIPTION**

**BADGER TRANSITION (BAE.AGUDE5):** From over BAE VOR/DME on BAE R-307 to ROBBY INT then on EAU R-123 to EAU VORTAC, then on EAU R-286 to AGUDE/EAU 41 DME. Thence. . . .

**THATS TRANSITION (THATS.AGUDE5):** From over THATS INT on GEP R-085 to AGUDE/ GEP 42 DME. Thence. . . .

. . . . From over AGUDE/GEP 42 DME via GEP R-085 to GEP VORTAC, then expect RADAR vectors to final approach course.

# AGUDE FIVE ARRIVAL

NC-1, 26 MAR 2020 to 23 APR 2020