

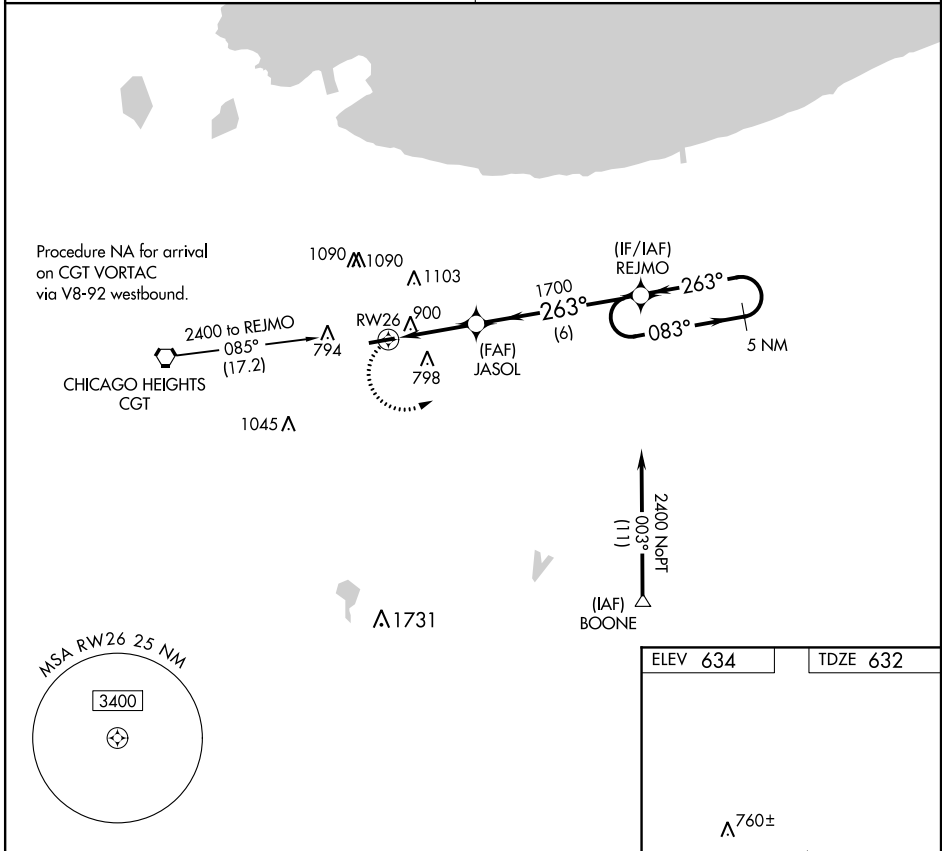
APP CRS	Rwy Idg	3779
263°	TDZE	632
	Apt Elev	634

RNAV (GPS) RWY 26

GRIFFITH-MERRILLVILLE (Ø5C)

RNP APCH	Obtain local altimeter setting on CTAF; when not received use Chicago Midway Init altimeter setting and increase all MDAs 60 feet. Visibility reduction by helicopters NA. Procedure NA at night.	MISSED APPROACH: Climbing left turn to 2400 direct REJMO and hold.
----------	---	---

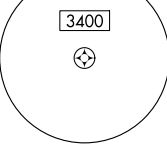
CHICAGO APP CON 133.1 285.6	UNICOM 123.0 (CTAF)
---------------------------------------	-------------------------------



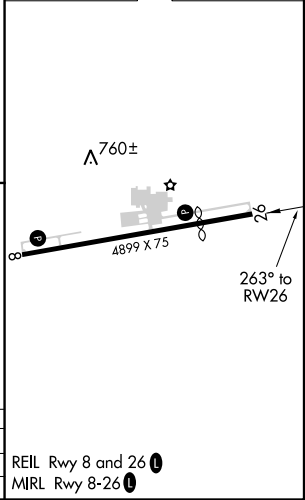
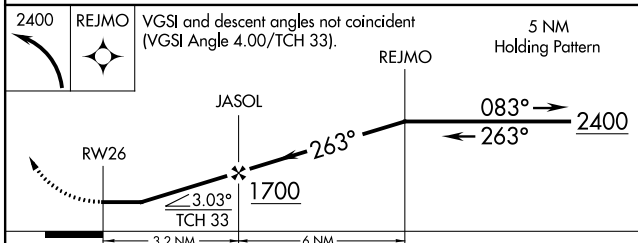
EC-2, 26 MAR 2020 to 23 APR 2020

EC-2, 26 MAR 2020 to 23 APR 2020

MSA RW26 25 NM



ELEV 634	TDZE 632
----------	----------



CATEGORY	A	B	C	D
LNAV MDA	1160-1	528 (600-1)		NA
CIRCLING	1200-1	566 (600-1)		NA

REIL Rwy 8 and 26
MIRL Rwy 8-26