

VORTAC BDF 114.7 Chan 94	APP CRS 133°	Rwy Idg 4003 TDZE 564 Apt Elev 585
--	------------------------	---

VOR RWY 13

MARSHALL COUNTY (C75)

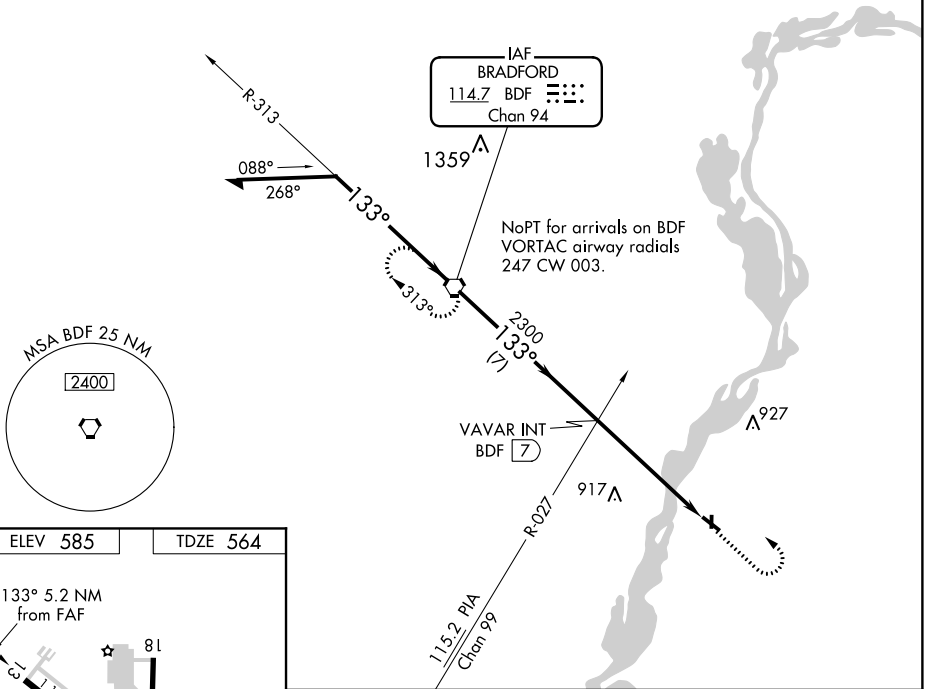
⚠ When local altimeter not received, use Peru climeter setting and increase all MDA 80 feet, increase S-13 Cat C visibility to 1 1/8, and Circling Cat C visibility to 2. Night landing: Rwy 18, 31, 36 NA.
 ⚠ NA Helicopter visibility reduction below 3/4 SM NA.

MISSED APPROACH: Climb to 1500, then climbing left turn to 2500 direct BDF VORTAC and hold.

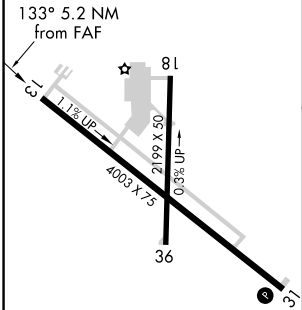
AWOS-3
119.425

CHICAGO CENTER
124.55 307.125

UNICOM
122.8 (CTAF)



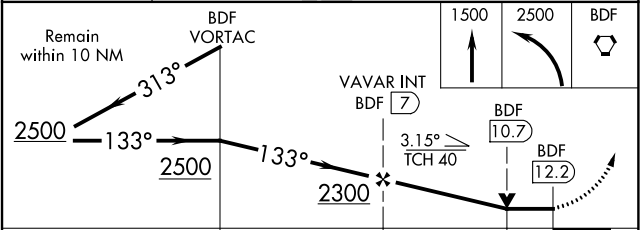
ELEV 585 TDZE 564



REIL Rwy 13
MIRL Rwy 13-31
LIRL Rwy 18-36

FAF to MAP 5.2 NM

Knots	60	90	120	150	180
Min:Sec	5:12	3:28	2:36	2:05	1:44



CATEGORY	A	B	C	D
S-13	1140-1	576 (600-1)	1140-1 1/8 576 (600-1 1/8)	NA
<input checked="" type="checkbox"/> CIRCLING	1140-1	572 (600-1)	1200-1 3/4 615 (700-1 3/4)	NA

EC-3, 26 MAR 2020 to 23 APR 2020

EC-3, 26 MAR 2020 to 23 APR 2020