

# OSHNN EIGHT DEPARTURE (RNAV)

AL-237 (FAA)

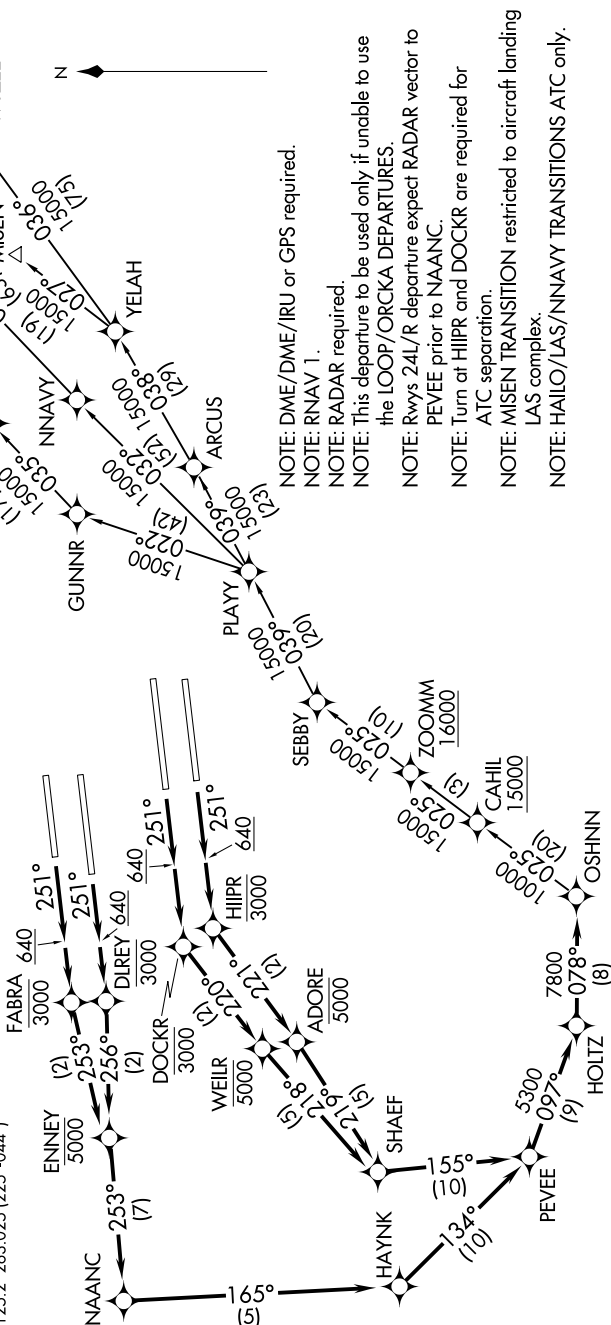
LOS ANGELES INTL (LAX)  
LOS ANGELES, CALIFORNIA

SW-3, 23 APR 2020 to 21 MAY 2020

**TOP ALTITUDE:  
17000**

**TAKEOFF MINIMUMS**  
Rwys 6L/R, 7L/R: NA-ATC.  
Rwys 24L/R, 25L/R: Standard with minimum climb  
of 500' per NM to 640.

D-ATIS DEP  
135.65  
CLNC DEL  
120.35 327.0  
CPDLC  
GND CON  
(N) 121.65 327.0  
(S) 121.75 327.0  
(W) 121.4 327.0  
LOS ANGELES TOWER  
(N) 133.9 329.3  
(S) 120.95 379.1  
SOCAL DEP CON  
124.3 363.2 (045°-224°)  
125.2 263.025 (225°-044°)



NOTE: DME/DME/IRU or GPS required.  
NOTE: RNAV 1.  
NOTE: RADAR required.  
NOTE: This departure to be used only if unable to use  
the LOOP/ORCKA DEPARTURES.  
NOTE: Rwys 24L/R departure expect RADAR vector to  
PEVEE prior to NAAANC.  
NOTE: Turn at HJPR and DOKCR are required for  
ATC separation.  
NOTE: MISEN TRANSITION restricted to aircraft landing  
LAS complex.  
NOTE: HAILO/LAS/NNNAVY TRANSITIONS ATC only.

(NARRATIVE ON FOLLOWING PAGE)

NOTE: Chart not to scale.

# OSHNN EIGHT DEPARTURE (RNAV)

LOS ANGELES, CALIFORNIA  
LOS ANGELES INTL (LAX)

SW-3, 23 APR 2020 to 21 MAY 2020