

ATLANTIC CITY INTL (ACY)(KACY) P (ANG) 9 NW UTC-5(-4DT) N39°27.46' W74°34.63'

WASHINGTON
H-101, 121, L-34G
IAP, AD

75 B Class I, ARFF Index C NOTAM FILE ACY

RWY 13-31: H1000X150 (ASPH-GRVD) S-85, D-120, 2S-152, 2D-350 PCN 78 F/A/W/T HIRL CL

RWY 13: MALSR. TDZL. PAPI(P4L)—GA 3.0° TCH 71'. RVR-TR Road.

RWY 31: REIL. PAPI(P4L)—GA 3.0° TCH 69'. RVR-TR Antenna.

RWY 04-22: H6144X150 (ASPH-CONC-GRVD) S-75, D-175, 2S-175, 2D-400, 2D/2D2-900 PCN 62 R/A/W/T HIRL

RWY 04: PAPI(P4L)—GA 3.0° TCH 47'. Tree.

RWY 22: VASI(V4L)—GA 3.0° TCH 51'. Trees.

LAND AND HOLD—SHORT OPERATIONS

LDG RWY	HOLD—SHORT POINT	AVBL LDG DIST
RWY 04	13-31	3550
RWY 13	04-22	3600
RWY 31	04-22	5750

RUNWAY DECLARED DISTANCE INFORMATION

RWY 04: TORA-6144 TODA-6144 ASDA-6144 LDA-6144
RWY 13: TORA-10000 TODA-10000 ASDA-10000 LDA-10000
RWY 22: TORA-6144 TODA-6144 ASDA-6144 LDA-6144
RWY 31: TORA-10000 TODA-10000 ASDA-10000 LDA-10000

ARRESTING GEAR/SYSTEM

RWY 13 BAK-14 BAK-12B (B) (1600') BAK-14 BAK-12B (B) (1600')

RWY 31

SERVICE: S3 **FUEL** 100LL, JET A, A++ **OX 3 MILITARY— A-GEAR** Avoid centerline lgt dur cable engagement to prevent tailhook bounce. **FUEL** A++(MIL) (NC-100LL, A) **OIL** JOAP(Mil) **TRAN ALERT** Ltd maint and prk.

AIRPORT REMARKS: Attended continuously. No training flts 0400-1200Z†. A-Gear Rwy 31 located 1600' from thld, ctc twr for ops. Avoid centerline lights during cable engagement to prevent tailhook bounce. Fox and birds on and in/ov arpt. Twy B has NSTD twy markings between Twy J and Twy K. Twy C clsd to dual tandem and double tandem equipped acft.

Experimental heliport located on N side of arpt rstd to use of FAA project acft only. High performance mil acft opr at arpt.

NS ABTMT procedures in effect ctc arpt ops at 609-645-7895 extension 2002. FAA apron PPR call 609-485-6482.

US Customs user fee arpt. Customs avbl Mon-Fri 1300-2200Z†. Provide minimum 24 hr advance notice to arrange for Customs. All calls to Customs Mon-Fri 1300-2200Z†, phone 609-484-1610. U.S. Customs fax 609-484-614. Ldg fee. Parking fee.

MILITARY REMARKS: ANG BASH Phase II in effect Apr thru Oct, ctc base ops on 261.0 or 140.7 for current BASH condition. PPR, ctc ANG base ops C609-761-6009, fax C609-761-6484, command post C609-761-6001. Ltd tran svc avbl 1100-2030Z† Tue-Fri, clsd Sat-Mon and hol. NSTD mark on ANG ramp, blue lines delineate F-16 wing tip clnc, yellow lines at hangar doors for personnel clear zone.

AIRPORT MANAGER: 609-645-7895
WEATHER DATA SOURCES: ASOS (609) 272-9311
COMMUNICATIONS: ATIS 125.725 (609-485-4444)
Ⓡ **APP/DEP CON** 134.25 (310°-129°) 124.6 (130°-309°)
TOWER 120.3 **GND CON** 121.9 **CLNC DEL** 127.85
ANG OPS 140.7

AIRSPACE: CLASS C svc ctc **APP CON.**

RADIO AIDS TO NAVIGATION: NOTAM FILE ACY.

(L) **VORTACW** 117.15 ACY Chan 118(Y) N39°27.35' W74°34.58' at fld. 67/10W.

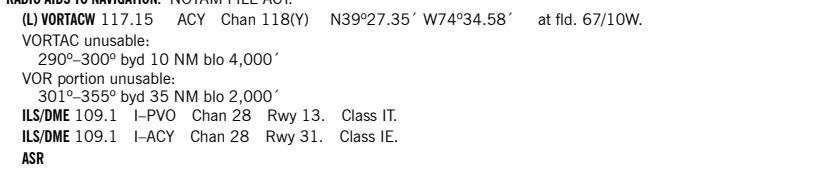
VORTAC unusable:
290°-300° byd 10 NM blo 4,000'

VOR portion unusable:
301°-355° byd 35 NM blo 2,000'

ILS/DME 109.1 I-PVO Chan 28 Rwy 13. Class IT.

ILS/DME 109.1 I-ACY Chan 28 Rwy 31. Class IE.

ASR



HELIPAD H1: H102X102 (ASPH)