

MILLVILLE MUNI (MIV)(KMIV) 3 SW UTC-5(-4DT) N39°22.07' W75°04.33'

WASHINGTON

85 B NOTAM FILE MIV

H-101, 121, L-34G, A
IAF

RWY 10-28: H6003X150 (ASPH-GRVD) S-120, D-179, 2S-83,
2D-263 PCN 55 F/D/W/T MIRL

RWY 10: MALSR. PAPI(P4L)—GA 3.0° TCH 53'. Trees.

RWY 28: PAPI(P4L)—GA 3.0° TCH 29'.

RWY 14-32: H5058X150 (CONC) S-40, D-65, 2S-83, 2D-125 MIRL

RWY 14: PAPI(P4L)—GA 3.0° TCH 48'. Trees.

RWY 32: PAPI(P4L)—GA 3.0° TCH 39'. Trees.

SERVICE: S7 FUEL 100LL, JET A LGT ACTIVATE MALSR Rwy 10; MIRL
Rwy 10-28 and Rwy 14-32—CTAF.

AIRPORT REMARKS: Attended 1100-2300Z. Self-svc fuel avbl 24 hrs with
credit card. Arpt CLOSED to ultralight acft, glider ops and formation fits
except PPR (856) 825-1244 Mon-Fri 1300-2100Z. Birds on and
invoft arpt. PAEW within all rwy and twy safety areas daily May-Oct.
Main apron clsd to tran acft north of Twy K. Twy G not to be used by
acft with wing span greater than 79' on Twy G north of Twy A. Rwy 10
calm wind rwy.

AIRPORT MANAGER: 856-825-1244

WEATHER DATA SOURCES: ASOS 119.6 (856) 327-3455.

COMMUNICATIONS: CTAF/UNICOM 123.0

RCO 122.2 (MILLVILLE RADIO)

Ⓡ ATLANTIC CITY APP/DEP CON 124.6

CLEARANCE DELIVERY PHONE: For CD if una to ctc on FSS freq, ctc atlantic city approach at 609-485-6193.

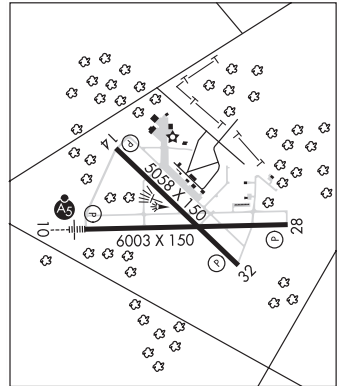
AIRSPACE: CLASS E.

RADIO AIDS TO NAVIGATION: NOTAM FILE MIV.

CEDAR LAKE (L) VORW/DME 115.2 VCN Chan 99 N39°32.26' W74°58.03' 216° 11.3 NM to fld. 120/10W.

RAINBOW NDB (HW) 363 RNB N39°25.09' W75°08.10' 147° 4.2 NM to fld. 92/11W.

ILS 110.9 I-MIV Rwy 10. Class IA. Unmonitored.



MONMOUTH EXECUTIVE (See BELMAR/FARMINGDALE on page 154)

MORRISTOWN MUNI (MMU)(KMMU) P (A) 3 E UTC-5(-4DT) N40°47.96' W74°24.89'

NEW YORK

187 B TPA—See Remarks AOE NOTAM FILE MMU

COPTER

RWY 05-23: H5998X150 (ASPH-GRVD) S-30, D-80, 2S-101

H-101, 121, L-33A, 34H
IAF, AD

PCN 25 F/C/X/T HIRL

RWY 05: REIL. Trees.

RWY 23: MALSR.

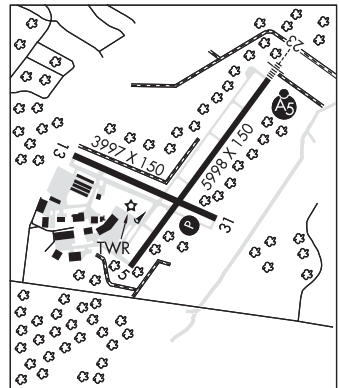
RWY 13-31: H3997X150 (ASPH-GRVD) S-30 PCN 11 F/C/X/T MIRL

RWY 13: Trees.

RWY 31: REIL. PAPI(P2L)—GA 3.5° TCH 39'. Trees.

SERVICE: FUEL 100LL, JET A, A+ OX 1, 2, 3, 4 LGT ACTIVATE HIRL
Rwy 05-23, MIRL Rwy 13-31, REIL Rws 05 and 31, MALSR Rwy
23, and PAPI Rwy 31—CTAF. **MILITARY—FUEL** (NC-100LL, A+)

AIRPORT REMARKS: Attended 1145-0330Z. When twr clsd all acft and
vehicles must state intentions on CTAF before ops on any rwy. Birds and
deer on and invoft arpt. ARFF svc avbl 24 hrs daily. For ARFF svcs when
twr clsd ctc ARFF station—CTAF or 973-455-1953. Inbound the
request FBO svcs, instructions, and ramp advisories 30 min prior to
arrival. After ldg ctc FBO again 129.6 for preferred ramp entrance to
Twy D or Twy J. Voluntary noise abatement proc include avoiding TGL
ops on Rwy 13-31. No turbojet ldg on Rwy 13 and Rwy 31 unless the
cross wind velocity for Rwy 05-23 exceeds 16 kts. TPA—1200(1013)
lgt acft, 1700(1513) heavy acft. Acft carrying explosive cargo PPR
before ldg, call 973-538-6400. Helicopter ops over residential areas
blo 1000' MSL should be avoided. NS ABTMT procedures in effect, ctc NS ABTMT office 973-538-3366 extension 122.
All arrival/departure acft follow manufacturers recommended procedures for quiet ops and minimum noise. Route 80
visual apch preferred for Rwy 23. During snow removal ops 15 minute prior notice required on 118.1 and no practice low
apchs or touch and go lds. Taxilane K N of FBO ramp, no hel or acft with a wingspan grt than 50 ft. US customs avbl
Mon-Fri 1300-2100Z, between 2101-1259Z and weekends call 973-267-0302 for appointment. Morristown
customs association fees apply, ctc arpt manager 973-538-6400 for details. U.S. customs user fee arpt. Stage I
departure fee 0400-1145Z. Ldg fee. Flight Notification Service (ADCUS) avbl.



CONTINUED ON NEXT PAGE

CONTINUED FROM PRECEDING PAGE

AIRPORT MANAGER: 973-538-6400

WEATHER DATA SOURCES: AWOS-3 (973) 290-0135 LAWRS.

COMMUNICATIONS: CTAF 118.1 ATIS 124.25

Ⓡ **NEW YORK APP CON** 127.6

TOWER 118.1 (1145-0330Z) **GND CON** 134.2 **CLNC DEL** 128.6

Ⓡ **NEW YORK DEP CON** 119.2

CLEARANCE DELIVERY PHONE: For CD when ATCT is clsd ctc New York Apch at 800-645-3206.

AIRSPACE: CLASS D svc 1145-0330Z; other times CLASS G.

RADIO AIDS TO NAVIGATION: NOTAM FILE TEB.

TETERBORO (T) VORW/DME 108.4 TEB Chan 21 N40°50.92' W74°03.73' 271° 16.3 NM to fld. 3/11W.

DME unusable:

060°-080° byd 22 NM blo 2,500'

081°-120° blo 4,000'

121°-180° blo 3,000'

236°-246°

VOR unusable:

081°-120° blo 4,000'

121°-180° blo 3,000'

236°-246°

CATHAM NDB (MHW) 254 CAT N40°44.45' W74°25.79' 024° 3.6 NM to fld. 251/13W. NOTAM FILE MIV.

ILS 110.3 I-MMU Rwy 23. Class IB. Unmonitored when ATCT closed. Glideslope unusable for coupled apchs blo 732' MSL.

MOUNT HOLLY

SOUTH JERSEY RGNL (VAY)(KVAY) 4 SW UTC-5(-4DT) N39°56.57' W74°50.75'

53 B TPA-853(800) NOTAM FILE VAY

RWY 08-26: H3881X50 (ASPH) S-30 MIRL

RWY 08: REIL. PAPI(P2R)-GA 3.25° TCH 45'. Tree.

RWY 26: REIL. PAPI(P2R)-GA 3.0° TCH 40'. Tree. Rgt tfc.

SERVICE: S4 **FUEL** 100LL, JET A **LGT** ACTIVATE MIRL Rwy 08-26 and

REIL Rwy 08 and Rwy 26-123.3.

AIRPORT REMARKS: Attended Apr-Oct 1300-0100Z, Nov-Mar

1300-2300Z. Arpt unattended Thanksgiving, Christmas Day and New Years Day. Jet A fuel avbl 24 hr self svc with credit card or truck during attended hrs. Deer on and in/ovf arpt. Helicopter tkfs and ldrs restricted to Rwy 08-26 only. Balls marking p-lines on apch to Rwy 08 faded. Trees along sides of rwy primarily northwest. Avoid overflying housing area WNW of arpt blo 300' when in the traffic pattern for Rwy 08. Parallel twy NSTD with 18' asphalt. Rwy 08 VGSi and descent angles not coincident.

AIRPORT MANAGER: 609-267-3131

WEATHER DATA SOURCES: ASOS 119.325 (609) 267-1176.

COMMUNICATIONS: CTAF/UNICOM 122.8

Ⓡ **MC GUIRE APP/DEP CON** 126.475

GCO 121.725 thru McGuire Apch Control

CLEARANCE DELIVERY PHONE: For CD use GCO 121.725, if una ctc Mc Guire Apch at 609-754-2767.

RADIO AIDS TO NAVIGATION: NOTAM FILE MIV.

ROBBINSVILLE (H) VORTACW 113.8 RBV Chan 85 N40°12.14' W74°29.70' 236° 22.4 NM to fld. 248/10W.

TACAN AZIMUTH unusable:

100°-110°

DME unusable:

075°-080°

100°-114°

130°-160° byd 30 NM blo 4,000'

WASHINGTON

L-34G, A

IAP

