

MILLBROOK

SKY ACRES (44N) 6 SW UTC-5(-4DT) N41°42.45' W73°44.28'

NEW YORK

698 NOTAM FILE ISP

L-33B, 34I

RWY 17-35: H3830X60 (ASPH) S-20 MIRL 1.3% up S

IAP

RWY 17: Brush.

RWY 35: PAPI(P2L)—GA 3.0° TCH 33'. Trees.

SERVICE: S4 FUEL 100LL LGT ACTIVATE MIRL Rwy 17-35; PAPI Rwy 35—122.8.

AIRPORT REMARKS: Attended 1300-2100Z†. Self-svc fuel avbl 24 hrs. Rwy 17-35 safety areas have 30' dropoffs sloping 20' from thld at both ends. Parallel twy not lgtd. PAPI Rwy 35 unusable 8° right of centerline. Cold temperature airport. Altitude correction required at or below -23C.

AIRPORT MANAGER: 845-677-5010

COMMUNICATIONS: CTAF/UNICOM 122.8

Ⓡ **NEW YORK APP/DEP CON** 132.75

CLEARANCE DELIVERY PHONE: For CD ctc New York Apch at 516-683-2448

RADIO AIDS TO NAVIGATION: NOTAM FILE ISP

KINGSTON (L) VOR/DME 117.6 IGN Chan 123 N41°39.93' W73°49.33' 068° 4.5 NM to fld. 582/12W.

VOR portion unusable:

045°-050° byd 35 NM blo 4,300'

070°-140° byd 30 NM blo 3,400'



MISSE N44°51.25' W74°54.95' NOTAM FILE MSS.

NDB (LOMW) 278 MS 045° 5.8 NM to Massena Intl-Richards Fld. 245/14W.

MONGA N41°46.00' W74°51.64' NOTAM FILE MSV.

NDB (MHW/LOM) 359 MS 155° 4.9 NM to Sullivan Co Intl. 1387/12W.

NEW YORK

L-33A, 34H

NDB unusable:

Byd 15 NM

MONTAUK (MTP)(KMTP) 3 NE UTC-5(-4DT) N41°04.60' W71°55.23'

NEW YORK

7 NOTAM FILE MTP

COPTER

RWY 06-24: H3246X75 (ASPH) MIRL

L-33C

RWY 06: PAPI(P2R)—GA 3.83° TCH 45'. Thld dspcld 302'. Trees.

IAP

RWY 24: PAPI(P2L)—GA 4.0° TCH 24'. Thld dspcld 668'. Hill. Rgt tfc.

SERVICE: LGT ACTIVATE MIRL Rwy 06-24, PAPI Rwy 06 and Rwy 24—121.7. PAPI Rwy 06 temporarily OTS.

AIRPORT REMARKS: Attended Apr-Oct dalgt hrs, other times irregularly. Arprt clsd to helicopter ops SS-SR; PPR. Helicopters call for prior permission to land on ramp area. Arprt clsd to jet acft exc PPR call arprt manager 631-668-3738. Deer on or invof arprt. No touch and goes Rwy 06-24. Rwy 06 18' brush along rwy edge 90' left, 30' pole 400' from thld 79' left, 31' pole 216' from rwy thld 233' right. Rwy 06, 26' tree 382' from thld 21' left, 25'-32' trees 180'-255' from thld 60'-90' left, 11'-17' trees 225'-270' from thld 4'-95' right. Rwy 24, 21' brush along rwy edge 87' rgt. Ldg fee. Noise abatement, Rwy 24 dep, right turn ASAP.

AIRPORT MANAGER: 631-668-3738

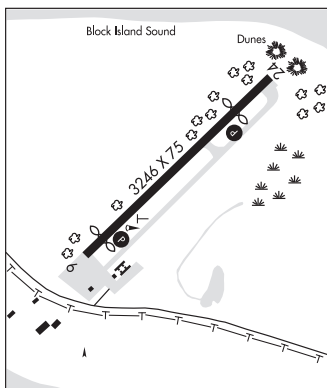
COMMUNICATIONS: CTAF/UNICOM 122.7

Ⓡ **NEW YORK APP CON** 125.975

Ⓡ **PROVIDENCE DEP CON** 125.75 (Sun-Fri 1030-0530Z†, Sat 1030-0500Z†) other times ctc

Ⓡ **BOSTON CENTER DEP CON** 124.85

CLEARANCE DELIVERY PHONE: For CD ctc Providence Apch at 401-738-8945, when Apch clsd ctc Boston ARTCC at 603-879-6859.



CONTINUED ON NEXT PAGE

CONTINUED FROM PRECEDING PAGE

RADIO AIDS TO NAVIGATION: NOTAM FILE HTO.

HAMPTON (H) VORTACW 113.6 HTO Chan 83 N40°55.14' W72°19.00' 075° 20.3 NM to fld. 22/13W.

DME unusable:

280°-325° byd 35 NM blo 1,700'

326°-355° byd 30 NM blo 2,000'

TACAN AZIMUTH unusable:

280°-325° byd 35 NM blo 1,700'

326°-355° byd 30 NM blo 2,000'

VOR unusable:

010°-240°

270°-332°

MONTGOMERY

ORANGE CO (MGJ)(KMGJ) 1 SW UTC-5(-4DT) N41°30.71' W74°15.81'

370 B TPA—See Remarks NOTAM FILE MGJ

RWY 04-22: H5006X100 (ASPH-GRVD) S-30, D-57, 2D-85 HIRL

RWY 04: REIL. PAPI(P4L)—GA 3.0° TCH 52'. Trees.

RWY 22: REIL. PAPI(P2L)—GA 3.0° TCH 45'. Rgt tfc.

RWY 08-26: H3664X100 (ASPH) S-30, D-57, 2D-85 MIRL

0.3% up E

RWY 08: PAPI(P2L)—GA 3.5° TCH 49'. Trees.

RWY 26: PAPI(P2L)—GA 3.5° TCH 43'. Thld displd 315'. Fence. Rgt tfc.

SERVICE: S4 FUEL 100LL, JET A OX 1, 2, 3, 4 LGT ACTVT HIRL Rwy 04-22; MIRL Rwy 08-26; twy lgts—CTAF. REIL Rwy 04 and 22; PAPI Rwys 04 and 22; 08 and 26 opr consly. PCL only avbl SS-SR.

AIRPORT REMARKS: Attended Sun 1330-2130Z†, Nov-Apr Mon-Sat 1200-2200Z†, May-Oct Mon-Sat 1200-0000Z†. Deer and birds on and invof arpt. Rwy 04 designated calm wind rwy. Wind indicator on Rwys 04, 22, 26. Be aware of large turbojet acft invof Stewart arpt lctd 7 NM east-southeast. 800' hill 1/2 mile northwest of arpt on downwind/base leg for Rwy 22. NS ABTMT procedures in effect, ctc arpt mgr 845-457-4925. TPA—1764(1400) single engine, 2064(1700) multi-engine/turboprop/jet. 9' stabilized shoulder each side of Rwy 08-26.

AIRPORT MANAGER: 845-457-4925

WEATHER DATA SOURCES: ASOS 119.275 (845) 457-1486.

COMMUNICATIONS: CTAF/AUNICOM 122.725

® **NEW YORK APP/DEP CON** 132.75

MONTGOMERY CLNC DEL 123.85

CLEARANCE DELIVERY PHONE: For CD ctc New York Apch at 516-683-2448 or 123.85

RADIO AIDS TO NAVIGATION: NOTAM FILE ISP.

HUGUENOT (H) VOR/DME 116.1 HUO Chan 108 N41°24.58' W74°35.50' 078° 16.0 NM to fld. 1300/11W.

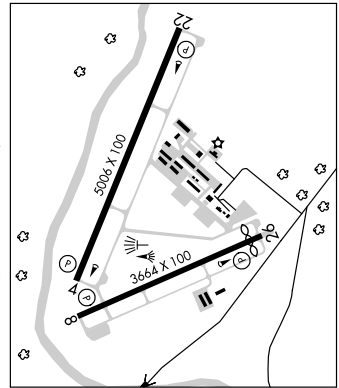
VOR unusable:

029°-045° byd 15 NM blo 5,000'

050°-060° byd 10 NM

210°-230° byd 20 NM blo 6,500'

ILS 111.7 I-MGJ Rwy 04. Class IT.



NEW YORK
H-101, 121, L-33B, 34H
IAF