

CONTINUED FROM PRECEDING PAGE

AIRPORT MANAGER: (718) 244-3501

WEATHER DATA SOURCES: ASOS 128.725 (718) 656-0956. LLWAS. TDWR.

COMMUNICATIONS: D-ATIS ARR/DEP 128.725 D-ATIS ARR-SW 115.4 D-ATIS ARR-NE 117.7 UNICOM 122.95

KENNEDY RCO 122.1R 115.9T (NEW YORK RADIO)

Ⓡ NEW YORK APP CON 125.7 128.125

Ⓡ NEW YORK DEP CON 135.9

TOWER 119.1 (Rwys 04R-22L and 13L-31R) 123.9 (Rwy 04L-22R and 13R-31L)

GND CON 121.9 CLNC DEL/PRE TAXI CLNC 135.05 RAMP CTL 125.05

CPDLC (LOGON KUSA)

AIRSPACE: CLASS B See VFR Terminal Area Chart.

RADIO AIDS TO NAVIGATION: NOTAM FILE JFK.

KENNEDY (H) VOR/DME 115.9 JFK Chan 106 N40°37.97' W73°46.28' at fld. 11/12W.

VOR/DME unusable:

100°-299° byd 30 NM blo 2,000'

300°-059° byd 30 NM blo 2,500'

060°-099° byd 25 NM blo 2,500'

CANARSIE (T) VOR/DME 112.3 CRI Chan 70 N40°36.75' W73°53.67' 084° 5.5 NM to fld. 10/11W.

VOR unusable:

047°-175°

224°-035°

ILS/DME 110.9 I-HIQ Chan 46 Rwy 04L. Class IE. Glideslope unusable byd 5° right of course. Auto cpd apchs na blw 500ft MSL.

ILS/DME 109.5 I-JFK Chan 32 Rwy 04R. Class IIIE. DME also serves Rwy 22R.

ILS/DME 111.5 I-TLK Chan 52 Rwy 13L. Class IIE. LOC unusable byd 11 DME. DME unusable byd 30° right of centerline. Glideslope unusable byd 8 NM.

ILS/DME 110.9 I-IWY Chan 46 Rwy 22L.

ILS/DME 109.5 I-JOC Chan 32 Rwy 22R. Localizer offset angle 2.5 deg. DME also serves Rwy 04R.

ILS 111.35 I-MOH Rwy 31L. Class IT.

ILS/DME 111.5 I-RTH Chan 52 Rwy 31R. Class ID. LOC unusable byd 15° left side of course. ILS rth markings obsc at twy k indef.

COMM/NAV/WEATHER REMARKS: Use caution for possible radio interference or false instructions on twr frequencies.

LAGUARDIA (LGA)(KLGA) 4 E UTC-5(-4DT) N40°46.64' W73°52.36'

NEW YORK

21 B LRA Class I, ARFF Index D NOTAM FILE LGA

COPTER

RWY 13-31: H7003X150 (ASPH-CONC-GRVD) S-80, D-170, 2S-175, 2D-360 PCN 63 F/B/W/T

H-101, 12L, L-33B, 34H

HIRL CL

IAP, AD

RWY 13: MALSR. TDZL. PAPI(P4L)—GA 3.1° TCH 55'. RVR-TR

RWY 31: REIL. PAPI(P4R)—GA 3.0° TCH 71'. RVR-TR Bldg.

RWY 04-22: H7001X150 (ASPH-CONC-GRVD) S-80, D-170, 2S-175, 2D-360 PCN 63 F/B/W/T HIRL CL

RWY 04: MALSR. TDZL. PAPI(P4R)—GA 3.1° TCH 76'. RVR-TR Bldg.

RWY 22: ALSF1. TDZL. PAPI(P4R)—GA 3.0° TCH 67'. RVR-TR

RUNWAY DECLARED DISTANCE INFORMATION

RWY 04: TORA-7001 TODA-7001 ASDA-7001 LDA-7001

RWY 13: TORA-7003 TODA-7003 ASDA-7003 LDA-7003

RWY 22: TORA-7001 TODA-7001 ASDA-7001 LDA-7001

RWY 31: TORA-7003 TODA-7003 ASDA-7003 LDA-7003

ARRESTING GEAR/SYSTEM

RWY 04: EMAS

RWY 13: EMAS

RWY 22: EMAS

RWY 31: EMAS

SERVICE: S4 FUEL 100LL, JET A OX 1, 2, 3, 4

AIRPORT REMARKS: Special Air Traffic Rules—Part 93, High Density Arpt, Prior Reservation Required, see Aeronautical

Information Manual. Coded Transponder reqd. VFR reservation info avbl on ATIS. Attended continuously. Ship masts in apch Rwy 31. Flocks of birds on and in/ov arpt. Obst sign structure unknown (39' AGL) 500' east of Rwy 04-22 cntrln and 4,800' south of Rwy 13-31 cntrln. Exp to leave and re-enter the Class B Airspace dur moderate to heavy arr periods. Magnetic anomalies may affect compass hdg when using extn Rwy 13 and Rwy 22 for tkf. NS ABTMT procedures in effect for details ctc affd mgr. Helicopter pld lctd at the int of Twy D and Twy F clsd indef. Twy G, Twy P, Twy R and Twy U conc deck rstd to 5 kts turns, 10 kts straight. Twy F and Twy D west of Twy BB clsd to acft with wingspans in excess of 125'. Twy F lctd btn Twy BB and Twy Y clsd indef. B767-400 acft rstd to 10 kts on Twy DD, Twy Z, Twy B, and Twy AA. ASDE-X in use. Operate transponders with altitude reporting mode and ADS-B (if equipped) enabled on all airport surfaces. Rwy status lgts in opr. Rwy 13 PAPI and ILS not coincident. Rwy 13 PAPI and RNAV glidepath not coincident. Rwy 22 PAPI and glidepath not coincident. Rwy 31 PAPI and RNAV glidepath not coincident. PAPI Rwy 13 unusable 8° left of cntrln and 9° rgt of cntrln. Ldg fee. Flight Notification Service (ADCUS) avbl.

CONTINUED ON NEXT PAGE

CONTINUED FROM PRECEDING PAGE

AIRPORT MANAGER: 718-533-3401

WEATHER DATA SOURCES: ASOS (718) 672-6317 LLWAS.

COMMUNICATIONS: D-ATIS ARR 125.95 (718) 424-4713 D-ATIS DEP 127.05 (718) 424-4713 UNICOM 122.95

Ⓡ NEW YORK APP CON 120.8 120.05

TOWER 118.7 GND CON 121.7 CLNC DEL 135.2 (121.875 helicopters) PRE TAXI CLNC 135.2

Ⓡ NEW YORK DEP CON 120.4

CPDLC (LOGON KUSA)

AIRSPACE: CLASS B See VFR Terminal Area Chart.

RADIO AIDS TO NAVIGATION: NOTAM FILE LGA.

LA GUARDIA (L) VORW/DME 113.1 LGA Chan 78 N40°47.02' W73°52.12' at fld. 9/12W.

VOR unusable:

245°-280° blo 6,000'

DME unusable:

245°-280° byd 25 NM blo 6,000'

ILS/DME 110.5 I-LGA Chan 42 Rwy 04. Class IT. LOC unusable byd 20° left of course.

ILS/DME 108.5 I-GDI Chan 22 Rwy 13. Class IE. Glideslope unusable byd 4° left of course.

ILS/DME 110.5 I-URD Chan 42 Rwy 22. Class IIE.

LDA/DME 111.15 I-TKD Chan 48(Y) Rwy 22X. LOC unusable byd 25° left of course byd 18° right of course. LOC cpd apch na.

LOC/DME 108.5 I-PZV Chan 22 Rwy 31. Offset localizer angle 1.7 degrees.

HELIPAD H1: H60X60 (ASPH) PERIMETER LGTS

HELIPORT REMARKS: H1 lctd int Twys BB between Twys D and F. Helicopter pad lctd at the int of Twy D, Twy F and Twy Y clsd indef. H1 helipad NSTD markings and lgtg.

LONG ISLAND MAC ARTHUR (ISP)(KISP) P (ARNG) 40 E UTC-5(-4DT) N40°47.77'

NEW YORK

W73°06.04'

COPTER

99 B LRA Class I, ARFF Index C NOTAM FILE ISP

H-101, 121, L-338, 341

RWY 06-24: H7006X150 (ASPH-GRVD) S-100, D-210, 2S-175,

IAP, AD

2D-300 PCN 55 F/B/X/U HIRL CL

RWY 06: MALSR (NSTD) VASI(V4L)—GA 3.0° TCH 51'. RVR-TR Tree.

RWY 24: MALSR. VASI(V4L)—GA 3.0° TCH 52'. RVR-TR Rgt tfc.

RWY 15R-33L: H5186X150 (ASPH-GRVD) S-100, D-170, 2S-175,

2D-300 PCN 55 F/B/X/U MIRL 0.4% up NW

RWY 15R: VASI(V4L)—GA 3.1° TCH 45'. Rgt tfc.

RWY 33L: VASI(V4L)—GA 3.2° TCH 60'. Trees.

RWY 15L-33R: H3175X75 (ASPH) S-25 PCN 19 F/B/X/U

0.3% up NW

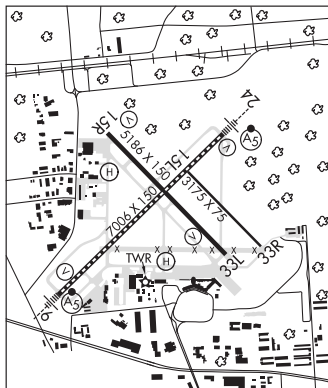
RWY 33R: Rgt tfc.

LAND AND HOLD—SHORT OPERATIONS

| LDG RWY | HOLD—SHORT POINT | AVBL LDG DIST |
|---------|------------------|---------------|
| RWY 06 | 15R-33L | 4200 |
| RWY 33R | 06-24 | 3000 |

RUNWAY DECLARED DISTANCE INFORMATION

| | | | |
|--------------------|-----------|-----------|----------|
| RWY 06: TORA-7006 | TODA-7006 | ASDA-7006 | LDA-7006 |
| RWY 15L: TORA-3175 | TODA-3175 | ASDA-3175 | LDA-3175 |
| RWY 15R: TORA-5186 | TODA-5186 | ASDA-5186 | LDA-5186 |
| RWY 24: TORA-7006 | TODA-7006 | ASDA-7006 | LDA-7006 |
| RWY 33L: TORA-5186 | TODA-5186 | ASDA-5186 | LDA-5186 |
| RWY 33R: TORA-3175 | TODA-3175 | ASDA-3175 | LDA-3175 |



SERVICE: S4 FUEL 100LL, JET A OX 1, 2, 3, 4 LGT When twr clsd ACTIVATE MIRL Rwy 15R-33L, twy lghts—CTAF. HIRL

Rwy 06-24 preset low ints ACTIVATE—CTAF. MALSR Rwy 06 or 24 preset med ints for prevailing wind rwy. Rwy 06 NSTD MALSR, three outermost flasher lghts exceed std spacing. MILITARY— FUEL 100LL, A

AIRPORT REMARKS: Attended continuously. Bird activity on and in/ov arpt. Advdy, tfc ldg Rwy 33L high density VFR tfc opr 600'

MSL and blo vcnty Bayport Aerodrome 3 miles southeast. Updrafts may be encountered in/ov powerplant 1.5 NM northeast Rwy 24. Voluntary NS ABTMT procedures in effect for fixed wing acft and helicopters. Ctc arpt management 631-467-3300. Rwy 15L-33R clsd to fixed wing acft at ngt and avbl for taxiing. Rwy 15L-33R not avbl for ngt tkf and ldg ops. Ltd to 48,000 lbs or less. Twy S unlgtd east of terminal apron. Rwy 15L NSTD markings, thld bar missing on rwy end. Rwy 33R NSTD markings, thld bar missing on rwy end. Ldg fee. Ldg fee for all acft exc mil and government.

AIRPORT MANAGER: 631-467-3300

WEATHER DATA SOURCES: ASOS 120.725 (631) 471-0131. WSP.

CONTINUED ON NEXT PAGE