

WHITE PLAINS

WESTCHESTER CO (HPN)(KHPN) 3 NE UTC-5(-4DT) N41°04.02' W73°42.45'

NEW YORK

439 B LRA Class I, ARFF Index B NOTAM FILE HPN

COPTER

RWY 16-34: H6549X150 (ASPH-GRVD) D-120, 2S-152

H-101, 121, L-33B, 34H

PCN 34 F/B/X/U HIRL CL 0.9% up NW

IAP, AD

RWY 16: MALSR. TDZL. PAPI(P4L)—GA 3.0° TCH 55'. RVR-T

RWY 34: REIL. PAPI(P4L)—GA 3.0° TCH 56'. RVR-R Bldg.

RWY 11-29: H4451X150 (ASPH-GRVD) S-70, D-120, 2S-152, 2D-120 PCN 28 F/B/X/U MIRL

RWY 11: REIL. PAPI(P4L)—GA 3.0° TCH 54'.

RWY 29: Thld dspclcd 1292'. Trees.

LAND AND HOLD—SHORT OPERATIONS

LDG RWY	HOLD—SHORT POINT	AVBL LDG DIST
RWY 11	16-34	2500
RWY 16	11-29	4000

RUNWAY DECLARED DISTANCE INFORMATION

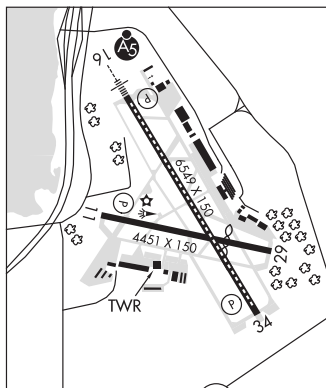
RWY 11: TORA-4451 TODA-4451 ASDA-4451 LDA-4451

RWY 16: TORA-6549 TODA-6549 ASDA-6549 LDA-6549

RWY 29: TORA-4451 TODA-4451 ASDA-4451 LDA-3159

RWY 34: TORA-6549 TODA-6549 ASDA-6549 LDA-6549

SERVICE: S4 FUEL 100LL, JET A OX 1, 2, 3, 4 LGT When twr clsd
ACTIVATE MALSR Rwy 16; REIL Rwy 11 and Rwy 34; TDZ lghts Rwy 16; cntrln lghts Rwy 16-34; HIRL Rwy 16-34; MIRL Rwy 11-29; twy lghts—CTAF.



AIRPORT REMARKS: Attended continuously. Deer, birds and other wildlife on and invof arpt. Except for taxiing, Rwy 11-29 CLOSED for arrivals and departures of the following acft: scheduled air carrier acft opr with more than 9 seats and unscheduled air carrier acft opr with more than 30 seats. Rwy 29 clsd to ldg acft more than 12,500 lbs. Snow removal equipment operating on all acft movement areas Nov thru Apr. Mowing within safety areas of all rwys and twys May thru Nov. Equipment and materials staged adjacent to the southern edge of Hangar 6 ramp. Be alert: Ground equipment opr adjacent to east side of Twy A between Twy G and Twy F. Noise abatement procedures in effect ctc arpt management 914-995-4861. Four designated helicopter routes in use for noise abatement. Acft opr MGTOW over 120,000 lbs must have prior permission, to be granted by arpt mgr or designee 914-995-4856. All approved acft must ctc arpt ops (open 24/7) on unicom freq 122.95 with actual tkof and ldg weights. ATC clnc rqrd for pushback onto movement areas. Hangar D3 ramp adj to active PAX loading area at main terminal ramp, acft requested use minimum thrust and avoid excess power and jet blast. Rwy 11 aiming point markings. Ldg fee. Flight Notification Service (ADCUS) available. NOTE: See Special Notices—Westchester Co Noise Abatement Procedures.

AIRPORT MANAGER: 914-995-4850

WEATHER DATA SOURCES: ASOS (914) 288-0216 WSP.

COMMUNICATIONS: D-ATIS 133.8 914-948-0130 CTAF 118.575 UNICOM 122.95

Ⓡ **NEW YORK APP CON** 126.4 (1200-0400Z‡) 120.8 (0400-1200Z‡)

Ⓡ **NEW YORK DEP CON** 120.55

TOWER 118.575 (1100-0400Z‡) **GND CON** 121.825

CLNC DEL 127.25 **CLNC DEL** 126.4 (When HPN twr clsd)

CPDLC (LOGON KUSA)

CLEARANCE DELIVERY PHONE: For CD when ATCT clsd ctc New York Apch on 126.4, if una call 516-683-2849.

AIRSPACE: CLASS D svc 1100-0400Z‡; other times CLASS E.

RADIO AIDS TO NAVIGATION: NOTAM FILE ISP.

CARMEL (L) VOR/DME 116.6 CMK Chan 113 N41°16.81' W73°34.88' 216° 14.0 NM to fld. 694/12W.

VOR unusable:

001°-155°

195°-225°

245°-270°

325°-355°

ILS/DME 109.7 I-HPN Chan 34 Rwy 16. Class IIE.

ILS/DME 109.7 I-OJZ Chan 34 Rwy 34. Class IT. LOC unusable byd 28° left of course and 25° right of course.

COMM/NAV/WEATHER REMARKS: ATIS can also be received via CMK VOR frequency 116.6 (CARMEL)

WHITFORDS (See WEEDSPORT on page 249)

WILLIAMSON—SODUS (See WILLIAMSON/SODUS on page 253)