

NEW MILFORD

CANDLELIGHT HELIPORT (6Y2) 2 W UTC-5(-4DT) N41°34.07' W73°27.64'

NEW YORK

675 NOTAM FILE BDR

HELIPAD H1: H50X50 (ASPH)**HELIPORT REMARKS:** Unattended. Heliport clsd exc PPR call 203-648-6782. Helipad H1 28' building 135' east of pad. Ldg fee, \$50.00 per landing.**AIRPORT MANAGER:** (203) 648-6782**COMMUNICATIONS:** CTAF 122.9**CLEARANCE DELIVERY PHONE:** For CD ctc New York Apch at 516-683-2849**CANDLELIGHT FARMS** (11N) 3 SW UTC-5(-4DT) N41°34.15' W73°27.73'

NEW YORK

675 NOTAM FILE BDR

RWY 17-35: 2900X50 (TURF) 0.9% up N**RWY 17:** Hill.**RWY 35:** Trees.**AIRPORT REMARKS:** Attended dalgt hrs. Arpt clsd to helicopters and glider activity. Arpt clsd to touch and go ldg. Arpt clsd to tsnt acft Nov-May due to muddy rwy conds. Experimental acft only by PPR 203-241-6064. Rwy 17-35 panel markers at each rwy end. Ldg fee. Ovnegt prkg by PPR 203-241-6064. Fee for overnight parking.**AIRPORT MANAGER:** 203-722-1629**COMMUNICATIONS:** CTAF 122.9**CLEARANCE DELIVERY PHONE:** For CD ctc New York Apch at 516-683-2849**NORTHFIELD HELIPORT** (See THOMASTON on page 39)**NORWICH** N41°33.38' W71°59.96' NOTAM FILE BDR.

NEW YORK

(L) VORW/DME 110.0 ORW Chan 37 338° 13.9 NM to Windham. 310/14W.

H-10I, L-33C, 34I

OXFORD

WATERBURY-OXFORD (OXC)(KOXC) 3 N UTC-5(-4DT) N41°28.70' W73°08.11'

NEW YORK

730 B TPA—See Remarks NOTAM FILE OXC

H-10I, 12K, L-33B, 34I

RWY 18-36: H5801X100 (ASPH-GRVD) S-50, D-85, 2S-107,

2D-145 HIRL 0.9% up N

RWY 18: PAPI(P4L)—GA 3.0° TCH 47'. Rgt tfc.**RWY 36:** REIL. PAPI(P4L)—GA 3.0° TCH 56'. Thld dsplcd 500'.

P-line.

IAP, AD

RUNWAY DECLARED DISTANCE INFORMATION**RWY 18:** TORA-5801 TODA-5801 ASDA-5801 LDA-5801**RWY 36:** TORA-5801 TODA-5801 ASDA-5801 LDA-5301**SERVICE:** S4 FUEL 100LL, JET A LGT ACTIVATE REIL Rwy 36; PAPI Rwy 18 and Rwy 36; HIRL Rwy 18-36—CTAF. Rwy 18 VGSILgts baffled byd 6° left of cntrln. Rwy 36 VGSILgts baffled due to trees and power line twr byd 5° rgt of cntrln.**AIRPORT REMARKS:** Attended continuously. Deer and birds on and invof arpt.

748' electric transmission twrs running NE to SW 0.2 miles north of

middle marker. PAEW vicinity Rwy 18-36 safety zone summer only

SR-SS (mowing in progress daily). Arpt clsd to air carrier ops. Touch

and go ldg and practice low apchs prohibited between

0400-1200Z±. Practice low apch Rwy 36 NA when Rwy 18 is active.

All sod areas clsd. Rwy 36 calm wind rwy. TPA-1699 (973) for acft

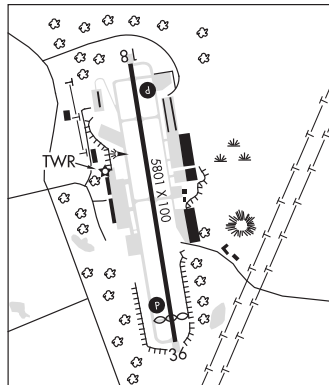
up to 12,500 lbs, 2199 (1473) acft over 12,500 lbs. Twy B, south of

Twy G, reflectors only. Twy D, reflectors only. Ldg fee for business, corporate and revenue producing acft. Steep drop off

after safety area north and south of Twy A.

AIRPORT MANAGER: 203-264-8010**WEATHER DATA SOURCES:** AWOS-3PT 132.975 (203) 262-1190.**COMMUNICATIONS:** CTAF 118.475 ATIS 132.975 203-262-1190 UNICOM 122.95

® NEW YORK APP/DEP CON 124.075 135.1 CLNC DEL 135.1 (When OXC twr clsd)

TOWER 118.475 (1100-0200Z±) **GND CON** 121.65 **CLNC DEL** 121.65**CLEARANCE DELIVERY PHONE:** For CD when twr clsd ctc New York Apch at 516-683-2449.**AIRSPACE:** CLASS D svc 1100-0200Z±; other times CLASS G.

CONTINUED ON NEXT PAGE

CONNECTICUT

CONTINUED FROM PRECEDING PAGE

RADIO AIDS TO NAVIGATION: NOTAM FILE BDR.

MADISON (L) VOR/DME 110.4 MAD Chan 41 N41°18.83' W72°41.53' 309° 22.3 NM to fld. 216/13W.

VOR unusable:

058°-090° byd 16 NM blo 8,000'

DME unusable:

330°-090° byd 30 NM blo 4,000'

ILS/DME 109.55 I-OCX Chan 32(Y) Rwy 36. Class IA. LOC unusable at thr abv 1,700'. LOC unusable byd DAAVY int/ i-oxc 6.5 DME abv 5,200'.

PLAINVILLE

ROBERTSON FLD (4B8) 2 N UTC-5(-4DT) N41°41.36' W72°51.88'

NEW YORK

202 B TPA—See Remarks NOTAM FILE BDR

L-33B, 34I

RWY 02-20: H3665X75 (ASPH) S-25 MIRL 0.4% up N

RWY 02: REIL.

RWY 20: REIL. Trees.

SERVICE: S4 FUEL 100LL, JET A OX1 LGT REIL Rwy 02 and Rwy 20 opr when rwy lgts on high ints. ACTIVATE MIRL Rwy 02-20—CTAF.

AIRPORT REMARKS: Attended Mon-Fri 1300-0000Z, Sat-Sun 1300-2300Z. TPA—1000(800) for acft less than 12,500 lbs, 1500(1300) for acft 12,500 lbs and above. NS ABTMT procedure in effect. Ctc 1-800-573-5519 or 860-747-5519 for details. Ldg fee for commercial and corporate acft only.

AIRPORT MANAGER: 860-747-5519

COMMUNICATIONS: CTAF/UNICOM 122.8

Ⓡ **YANKEE APP/DEP CON** 123.95

CLNC DEL 134.5

CLEARANCE DELIVERY PHONE: For CD ctc Yankee Apch at 860-386-3597

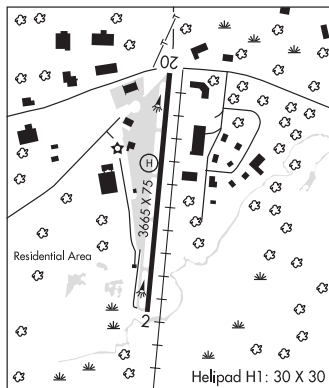
RADIO AIDS TO NAVIGATION: NOTAM FILE HFD.

HARTFORD (L) VOR/DME 114.9 HFD Chan 96 N41°38.47'

W72°32.85' 295° 14.6 NM to fld. 849/13W.

• • • • •

HELIPAD H1: H30X30 (ASPH)

**PUTNAM**

TOUTANT (C44) 6 NW UTC-5(-4DT) N41°57.34' W72°03.26'

NEW YORK

770 NOTAM FILE BDR

RWY 17-35: H1756X60 (ASPH) RWY LGTS(NSTD) 0.9% up N

RWY 17: Trees.

RWY 35: Trees.

SERVICE: LGT For lgts call 860-974-2099.

AIRPORT REMARKS: Attended irregularly. Rwy 17-35 not plowed winter, no ski ops. Be alert for back-taxiing acft on rwy. NSTD lighting not L-800 series.

AIRPORT MANAGER: 860-974-2099

COMMUNICATIONS: CTAF 122.9

CLEARANCE DELIVERY PHONE: For CD ctc Yankee Apch at 860-386-3597

PUTNAM N41°57.33' W71°50.65' NOTAM FILE BDR.

NEW YORK

(H) **VOR/DME** 117.4 PUT Chan 121 211° 8.5 NM to Danielson. 652/14W.

H-101, 11D, L-33C, 34J

DME unusable:

265°-301° byd 36 NM blo 3,000'

ROBERTSON FLD (See PLAINVILLE on page 38)

SALMON RIVER AIRFIELD (See MARLBOROUGH on page 35)

SIKORSKY HELIPORT (See STRATFORD on page 39)