

STUTT GART MUNI CARL HUMPHREY FLD (SGT)(KSGT) 7 N UTC-6(-5DT) N34°35.97' W91°34.50' **MEMPHIS**
 224 B NOTAM FILE SGT **H-6J, L-18F**
IAP

RWY 18-36: H6015X100 (ASPH-GRVD) S-75, D-150, 2S-82, 2D-200,
 2D/2D2-300 MIRL

RWY 18: REIL.

RWY 36: MALSF.

RWY 09-27: H5002X150 (CONC) S-25, D-65, 2S-82, 2D-120 MIRL

RWY 27: REIL.

SERVICE: S2 **FUEL** 100LL, JET A **LGT** ACTIVATE MALSF Rwy 36; REIL Rwy 18 and Rwy 27; MIRL Rwy 09-27 and Rwy 18-36—CTAF.

AIRPORT REMARKS: Attended Nov-Jan 1400-0100Z†, Feb-Oct Mon-Fri 1400-2230Z†. 100LL avbl 24 hrs self-serve with credit card, for fuel nights call 870-673-2960. Migratory birds on and invof arpt Nov-Feb. Numerous agricultural acft ops from Feb-Sep 500' AGL and below.

AIRPORT MANAGER: 870-673-2960

WEATHER DATA SOURCES: AWOS-3PT 119.025 (870) 673-1884.

COMMUNICATIONS: CTAF/UNICOM 122.8

Ⓡ **LITTLE ROCK APP/DEP CON** 135.4

CLNC DEL 123.7

CLEARANCE DELIVERY PHONE: For CD when una via freq ctc Little Rock Apch

501-379-2908 or Little Rock ATCT 501-379-2911

RADIO AIDS TO NAVIGATION: NOTAM FILE PBF.

PINE BLUFF (L) VOR/DME 116.0 PBF Chan 107 N34°14.81' W91°55.57' 035° 27.4 NM to fld. 212/4E.

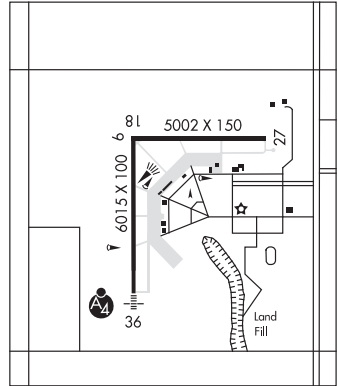
VOR unusable:

140°-145° byd 35 NM blo 4,900'

260°-275° byd 25 NM

NDB (LOMW) 338 TT N34°30.35' W91°34.91' 001° 5.6 NM to fld. 196/2E.

ILS/DME 110.55 I-TTL Chan 42(Y) Rwy 36. Class IE. LOM STUTT NDB. Unmonitored.



STUTT N34°30.35' W91°34.91' **MEMPHIS**
NDB (LOMW) 338 TT 001° 5.6 NM to Stuttgart Muni Carl Humphrey Fld. 196/2E. **L-18F**

TECCO N33°31.45' W93°54.36' NOTAM FILE TXK. **MEMPHIS**
NDB (LOMW) 234 TX 220° 6.0 NM to Texarkana Rgnl-Webb Fld. 260/5E. **L-17E**