

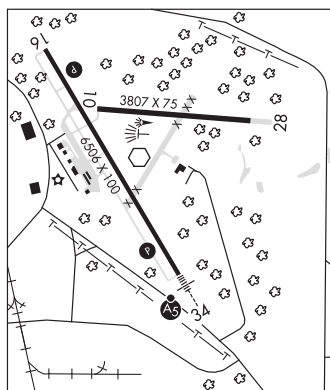
TIFT MYERS N31°25.72' W83°29.33' NOTAM FILE MCN.
(T) VORW 112.5 IFM at Henry Tift Myers. 351/1W. SHUTDOWN.
 VOR unusable:
 301°-324°
RCO 122.35 (MACON RADIO)
RCO 122.35 (MACON RADIO)

JACKSONVILLE
 L-181, 22J

TIFTON

HENRY TIFT MYERS (TMA)(KTMA) 2 SE UTC-5(-4DT) N31°25.77' W83°29.35'
 355 B NOTAM FILE MCN
RWY 16-34: H6506X100 (ASPH) S-42, D-60, 2D-106 HIRL
RWY 16: PAPI(P4L)—GA 3.0° TCH 45'. Pole.
RWY 34: MALSR. PAPI(P4L)—GA 3.0° TCH 43'.
RWY 10-28: H3807X75 (ASPH) S-30, D-45, 2D-75 0.3% up W
RWY 10: Trees.
SERVICE: S4 FUEL 100LL, JET A+ LGT ACTIVATE HIRL Rwy 16-34,
 PAPI Rwy 16 and Rwy 34, MALSR Rwy 34—CTAF.
AIRPORT REMARKS: Attended Mon-Fri 1200-2300Z, Sat-Sun
 1300-2300Z. Fuel 24 hr credit card svc avbl. After hrs svc
 229-382-2545. Parachute Jumping.
AIRPORT MANAGER: 229-382-2545
WEATHER DATA SOURCES: AWOS-3PT 118.525 (229) 386-8937.
COMMUNICATIONS: CTAF/UNICOM 122.7
TIFT MYERS RCO 122.35 (MACON RADIO)

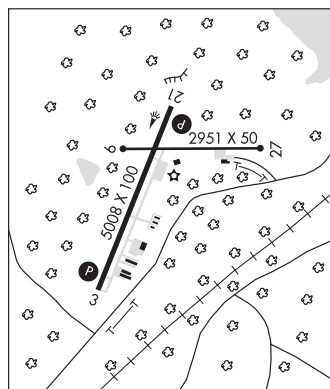
JACKSONVILLE
 H-9B, 12F, L-181, 22J
 IAP



(R) VALDOSTA APP/DEP CON 126.6 (east of VAD R-360 — R-180 radials)
 132.375 (west of VAD R-360 radial) (Opr 1300-0600Z Mon-Thu,
 1300-0300Z Fri, 1400-2200Z Sat, Sun and hol) other times ctc
(R) JAX CENTER APP/DEP CON 133.7
RADIO AIDS TO NAVIGATION: NOTAM FILE ABY.
PECAN (L) VORW/DME 116.1 PZD Chan 108 N31°39.31'
 W84°17.59' 110° 43.4 NM to fld. 292/2W.
 DME unusable:
 220°-360° byd 30 NM blo 3,000'
TIFT MYERS (T) VORW 112.5 IFM N31°25.72' W83°29.33' at fld. 351/1W. NOTAM FILE MCN. SHUTDOWN.
 VOR unusable:
 301°-324°
ILS/DME 109.7 I-TMA Chan 34 Rwy 34. Class IB. Unmonitored.

TOCCOA RG LETOURNEAU FLD (TOC)(KTOC) 2 NE UTC-5(-4DT) N34°35.57' W83°17.78'
 996 B NOTAM FILE MCN
RWY 03-21: H5008X100 (ASPH) S-30 MIRL 0.5% up SW
RWY 03: REIL. PAPI(P2L)—GA 3.25° TCH 32'.
RWY 21: REIL. PAPI(P2L)—GA 3.0° TCH 33'. Trees.
RWY 09-27: H2951X50 (ASPH) S-20 0.8% up W
RWY 27: Trees.
SERVICE: S4 FUEL 100LL, JET A+ LGT Dusk-0300Z, after 0300Z
 ACTIVATE MIRL Rwy 03-21, REIL Rwy 03 and Rwy 21, PAPI Rwy 03
 and Rwy 21—CTAF.
AIRPORT REMARKS: Attended Mon-Sat 1400-2300Z, Sun 1700-2300Z.
 Deer on or in/ovf arpt. High ground starting 170' from RCL east and
 west of apch end Rwy 21 and dep Rwy 03.
AIRPORT MANAGER: 706-886-5632
WEATHER DATA SOURCES: AWOS-3 119.625 (706) 297-7473.
COMMUNICATIONS: CTAF/UNICOM 122.8

ATLANTA
 H-9B, 12G, L-25B
 IAP



(R) ATLANTA CENTER APP/DEP CON 134.8
CLEARANCE DELIVERY PHONE: For CD ctc Atlanta ARTCC at 770-210-7692.
RADIO AIDS TO NAVIGATION: NOTAM FILE AND.
FOOTHILLS (H) VORW/DME 113.4 ODF Chan 81 N34°41.75'
 W83°17.86' 179° 6.2 NM to fld. 1700/OE.
 VOR unusable:
 075°-085° byd 28 NM blo 5,300'
 199°-213° byd 15 NM blo 7,800'
 280°-295° byd 25 NM blo 11,000'
 301°-311° byd 20 NM blo 11,000'
 DME unusable:
 324°-344° blo 9,000'