

CHATTANOOGA

DALLAS BAY SKY PARK (1A0) 11 N UTC-5(-4DT) N35°11.25' W85°10.66'

ATLANTA
L-25A

690 B NOTAM FILE BNA

RWY 05-23: H3025X50 (ASPH) LIRL

RWY 05: Thld dspcd 200'. Tree.

RWY 23: Thld dspcd 700'. Trees. Rgt tfc.

SERVICE: FUEL 100LL LGT ACTVTY LIRL Rwy 05-23—CTAF. Rotg bcn ACTVTD with LIRL—CTAF.

AIRPORT REMARKS: Attended Mon-Fri irregularly, Sat 1400-2300Z†, Sun 1800-2300Z†. Rwy 05-23 trees both sides of rwy violate 7:1 transition sfc. Bldg both sides of rwy N end penetrate pri sfc.

AIRPORT MANAGER: 423-322-0521

COMMUNICATIONS: CTAF/UNICOM 123.0

CLEARANCE DELIVERY PHONE: For CD ctc Chattanooga Apch at 423-855-6478, when Apch clsd ctc Atlanta ARTCC at 770-210-7692.

RADIO AIDS TO NAVIGATION: NOTAM FILE CHA.

CHOO CHOO (H) VORTACW 115.8 GQO Chan 105 N34°57.68' W85°09.20' 354° 13.6 NM to fld. 1014/1E.

TACAN AZIMUTH unusable:

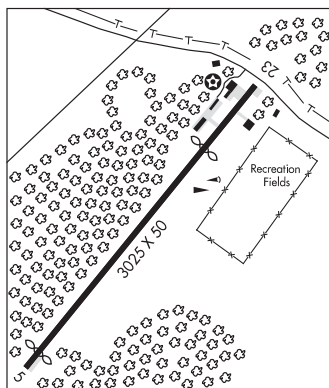
075°-110°

260°-290°

340°-350°. TACAN AZIMUTH OTS indef

TACAN DME unusable:

260°-290°



LOVELL FLD (CHA)(KCHA) P (ARNG) 5 E UTC-5(-4DT) N35°02.11' W85°12.21'

ATLANTA
H-9A, 12G, L-25A
IAP, AD

683 B LRA Class I, ARFF Index B NOTAM FILE CHA

RWY 02-20: H7400X150 (ASPH-GRVD) S-120, D-164, 2S-175, 2D-265 PCN 42 F/A/X/U HIRL CL

RWY 02: MALSR. PAPI(P4R)—GA 3.0° TCH 71'. RVR-TR

RWY 20: ALSF2. TDZL. RVR-TR Railroad.

RWY 15-33: H5575X150 (ASPH-GRVD) S-120, D-164, 2S-175, 2D-265 PCN 14 F/A/Y/U MIRL

RWY 15: PAPI(P4L)—GA 3.0° TCH 45'. Thld dspcd 106'. Trees.

RWY 33: PAPI(P4L)—GA 3.0° TCH 40'. Thld dspcd 575'. Trees.

RUNWAY DECLARED DISTANCE INFORMATION

RWY 02: TORA-7400 TODA-7400 ASDA-7100 LDA-7100

RWY 15: TORA-5575 TODA-5575 ASDA-5575 LDA-5470

RWY 20: TORA-7400 TODA-7400 ASDA-7400 LDA-7400

RWY 33: TORA-5470 TODA-5470 ASDA-5470 LDA-5000

SERVICE: S4 FUEL 100LL, JET A QX 3, 4 LGT ACTIVATE MALSR Rwy 02, TDZL Rwy 20, CL Rwy 02-20, PAPI Rwy 02, HIRL Rwy 02-20—CTAF. MIRL Rwy 15-33 unavbl when twr clsd. Rwy 20 ALSF2 opr med ints when twr clsd. Rwy 33 PAPI unusable byd 7° rgt of crs. **MILITARY—FUEL A+** (C423-855-2299. 30 min PN rqr.) (NC-100LL, A)

AIRPORT REMARKS: Attended continuously. Large flocks of birds invof arpt.

Tran acft avoid security zone within 300' of terminal bldg. Read back all hold short instr rqr'd. Flight Notification Service (ADCUS) available.

AIRPORT MANAGER: 423-855-2200

WEATHER DATA SOURCES: ASOS 119.85 (423) 499-5973. LLWAS.

COMMUNICATIONS: CTAF 118.3 ATIS 119.85 UNICOM 122.95

CHATTANOOGA RCO 122.2 (NASHVILLE RADIO)

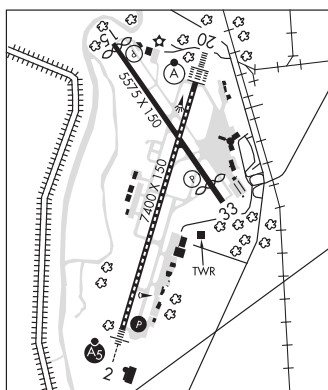
Ⓜ CHATTANOOGA APP/DEP CON 119.2 (200°-020°) 125.1 (021°-199°) (1100-0450Z†)

ATLANTA CENTER APP/DEP CON 132.05 (0450-1100Z†)

CHATTANOOGA TOWER 118.3 (1100-0450Z†) GND CON 121.7 CLNC DEL 120.95

CLEARANCE DELIVERY PHONE: For CD if una to ctc on FSS freq, ctc Chattanooga Apch at 423-855-6478, when Apch clsd ctc Atlanta ARTCC at 770-210-7692.

AIRSPACE: CLASS C svc ctc APP CON svc 1100-0450Z†; other times CLASS E.



CONTINUED ON NEXT PAGE

CONTINUED FROM PRECEDING PAGE

RADIO AIDS TO NAVIGATION: NOTAM FILE CHA.

CHOO CHOO (H) VORTACW 115.8 GGO Chan 105 N34°57.68' W85°09.20' 330° 5.1 NM to fld. 1014/1E.

TACAN AZIMUTH unusable:
075°-110°
260°-290°
340°-350°. TACAN AZIMUTH OTS indef

TACAN DME unusable:
260°-290°

DAISY NDB (HW) 341 CQN N35°09.99' W85°09.44' 198° 8.2 NM to fld. 936/2W. NDB unmonitored when ATCT closed.

ILS 108.3 I-CGW Rwy 02. Class IB. ILS unmntd when ATCT clsd. Glideslope unusable byd 4° left of course; byd 7° right of course.

ILS 109.5 I-CHA Rwy 20. Class IIE. Unmonitored when ATCT closed.

ASR (1100-0450Z†)

CHATTANOOGA N35°02.12' W85°12.23'
RCO 122.2 (NASHVILLE RADIO)

ATLANTA
L-25A

CHILHOWEE (See BENTON on page 390)

CHOO CHOO N34°57.68' W85°09.20' NOTAM FILE CHA.
(H) VORTACW 115.8 GGO Chan 105 330° 5.1 NM to Lovell Fld. 1014/1E.

ATLANTA
H-9A, 12G, L-25A

TACAN AZIMUTH unusable:
075°-110°
260°-290°
340°-350°. TACAN AZIMUTH OTS indef
TACAN DME unusable:
260°-290°

CLARKSVILLE

OUTLAW FLD (CKV)(KCKV) 6 NW UTC-6(-5DT) N36°37.31' W87°24.90'

550 B TPA-1600(1050) NOTAM FILE CKV

RWY 17-35: H5999X100 (ASPH) S-60, D-90, 2S-114 MIRL

RWY 17: REIL. PAPI(P2L)-GA 3.0° TCH 22'. Trees.

RWY 35: MALS. PAPI(P2L)-GA 3.0° TCH 50'. Trees. Rgt tfc.

RWY 05-23: H4004X100 (ASPH) S-40, D-60

RWY 05: Thld dsplcd 402'. Tree. Rgt tfc.

RWY 23: Thld dsplcd 503'. Tree.

SERVICE: S4 FUEL 100LL, JET A+ LGT ACTIVATE MALS Rwy 35; REIL Rwy 17-CTAF. PAPI Rwy 17 unusable beyond 9° right of centerline.

AIRPORT REMARKS: Attended Mon-Fri 1300-0000Z†, Sat-Sun 1400-2200Z†. Arpt unattended Christmas, Thanksgiving and New Years. Fuel: Aft hr svc-931-217-8765. Parachute Jumping. Deer on and invof arpt. Extv mil and civ flt trng within arpt area. Rwy 05-23 markings peeling and faded.

AIRPORT MANAGER: 931-431-2080

WEATHER DATA SOURCES: ASOS 134.575 (931) 431-3045.

COMMUNICATIONS: CTAF/UNICOM 122.8

® **CAMPBELL APP/DEP CON** 134.35

CLEARANCE DELIVERY PHONE: For CD when una via freq ctc Campbell Apch at 270-798-6441.

AIRSPACE: CLASS D.

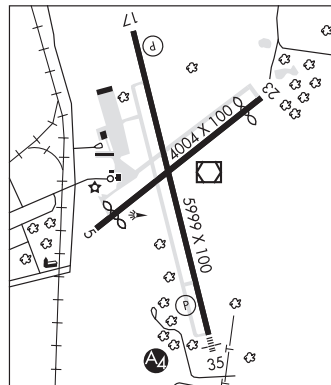
RADIO AIDS TO NAVIGATION: NOTAM FILE CKV.

CLARKSVILLE (T) VORV/DME 110.6 CKV Chan 43 N36°37.32' W87°24.76' at fld. 538/1W.

VOR portion unusable:
090°-110° byd 20 NM

SNUFF NDB (LOMW) 335 CK N36°31.62' W87°23.21' 348° 5.8 NM to fld. 501/1W.

LOC 111.7 I-CKV Rwy 35. LOM SNUFF NDB. NDB unusable byd 10 NM.



ST LOUIS
H-9A, 12G, L-161
IAP