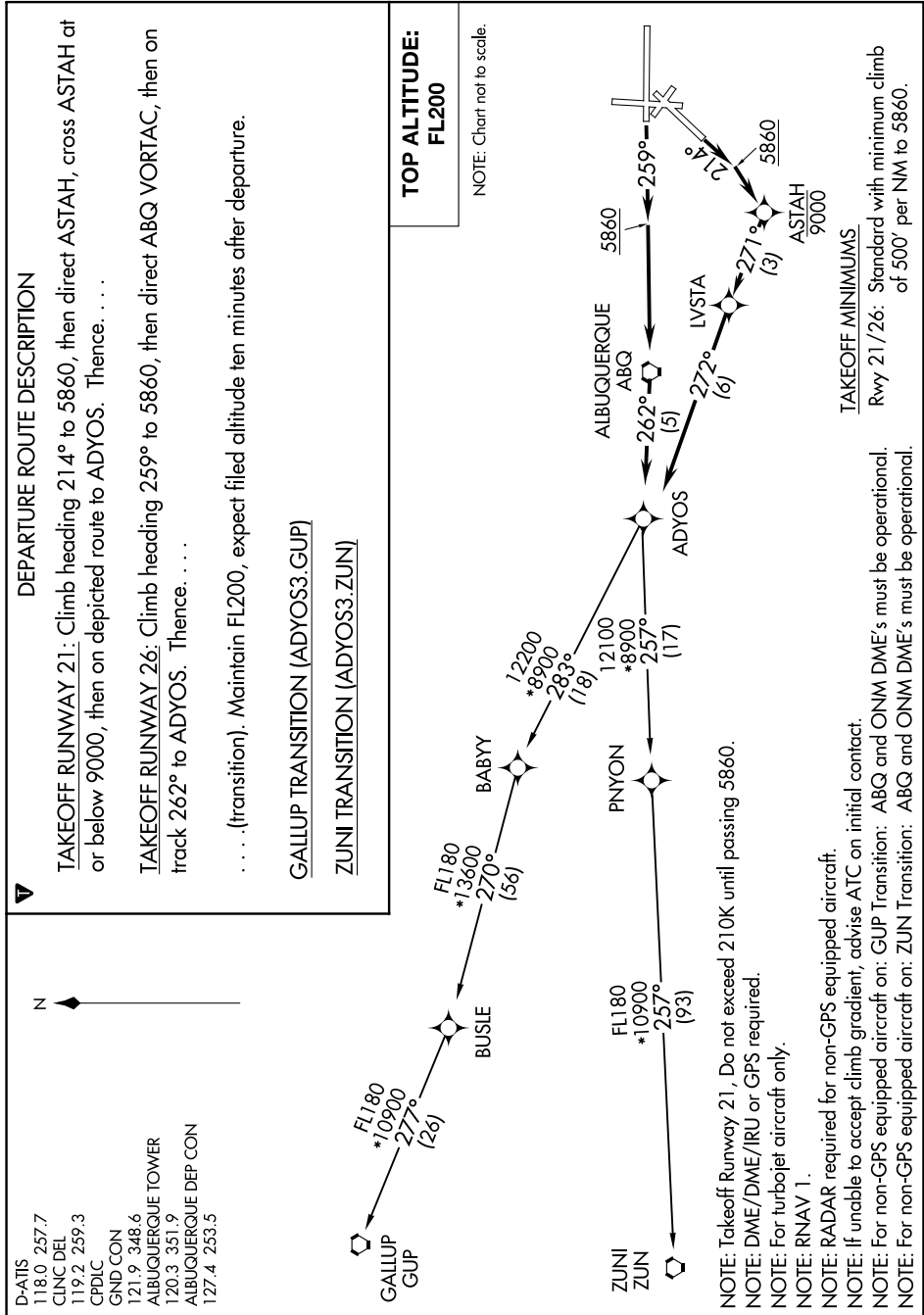


# ADYOS THREE DEPARTURE (RNAV)

ALBUQUERQUE INTL SUNPORT (ABQ)  
ALBUQUERQUE, NEW MEXICO

AL-12 (FAA)

SW-1, 10 SEP 2020 to 08 OCT 2020



# ADYOS THREE DEPARTURE (RNAV)

(ADYOS3.ADYOS) 25JUN15

ALBUQUERQUE, NEW MEXICO  
ALBUQUERQUE INTL SUNPORT (ABQ)

SW-1, 10 SEP 2020 to 08 OCT 2020

- D-ATIS 118.0 257.7  
CLNC DEL 119.2 259.3  
CPDC 121.9 348.6  
GND CON 120.3 351.9  
ALBUQUERQUE TOWER 127.4 253.5  
ALBUQUERQUE DEP CON

- NOTE: Takeoff Runway 21, Do not exceed 210K until passing 5860.  
NOTE: DME/DME/IRU or GPS required.  
NOTE: For turbojet aircraft only.  
NOTE: RNAV 1.  
NOTE: RADAR required for non-GPS equipped aircraft.  
NOTE: If unable to accept climb gradient, advise ATC on initial contact.  
NOTE: For non-GPS equipped aircraft on: GUP Transition: ABQ and ONM DME's must be operational.  
NOTE: For non-GPS equipped aircraft on: ZUN Transition: ABQ and ONM DME's must be operational.