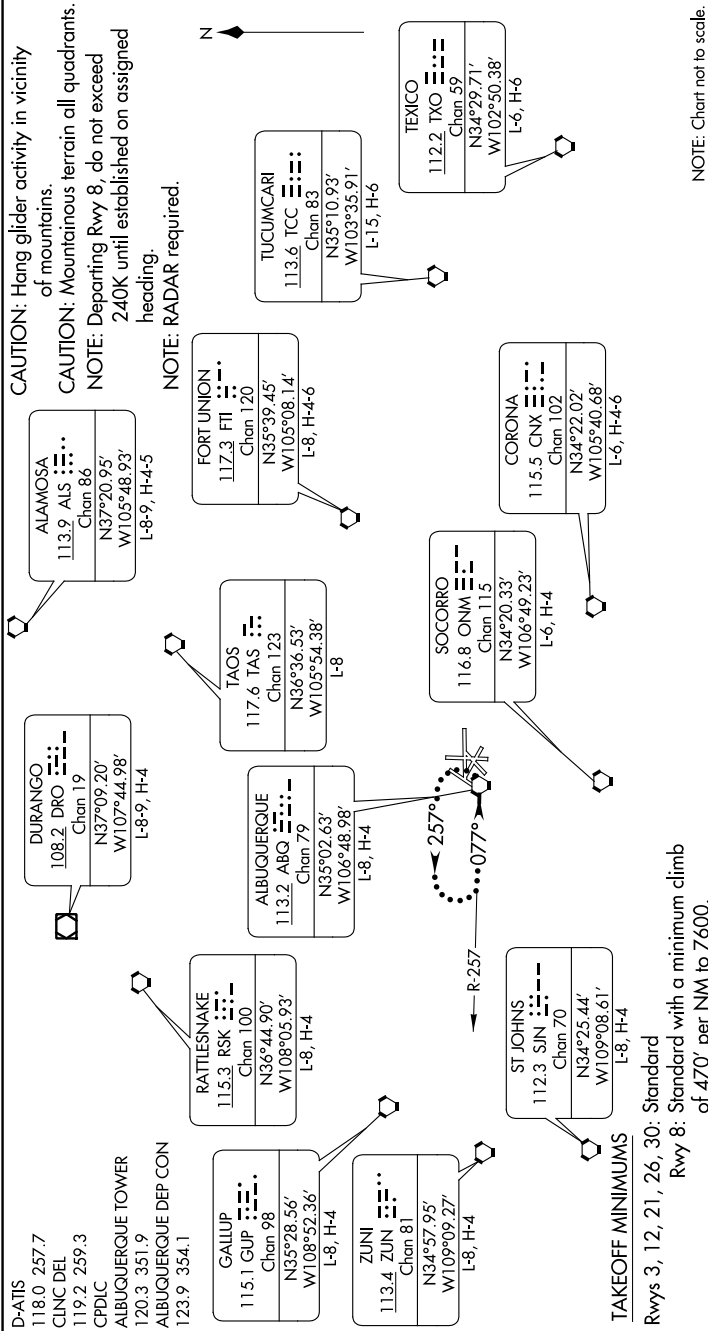


ALBUQUERQUE THREE DEPARTURE

SW-1, 10 SEP 2020 to 08 OCT 2020



NOTE: Chart not to scale.

DEPARTURE ROUTE DESCRIPTION

All aircraft climb on assigned heading for RADAR vectors to filed/assigned route. Expect clearance to filed altitude/flight level 5 minutes after departure.

LOST COMMUNICATIONS: If no transmissions are received for 1 minute after departure and a climb to 14000 feet or higher has not been issued, proceed direct ABQ VORTAC, climb in holding pattern to 14000, then proceed via assigned fix/route. If cleared above 14000 feet, climb on assigned heading to 14000 feet, then proceed via assigned route.

TAKEOFF MINIMUMS
Rwys 3, 12, 21, 26, 30: Standard
Rwy 8: Standard with a minimum climb of 470' per NM to 7600.

SW-1, 10 SEP 2020 to 08 OCT 2020