

# BOSQE THREE DEPARTURE (RNAV)

SW-1, 10 SEP 2020 to 08 OCT 2020

## DEPARTURE ROUTE DESCRIPTION

**TAKEOFF RUNWAY 21:** Climb heading 214° to 5860, then climb direct JETOK, cross JETOK at or below 9000, then on track 203° to cross BOSQE at or above 10000, thence. . . .

**TAKEOFF RUNWAY 26:** Climb heading 259° to 5860, then climbing left turn direct JETOK, cross JETOK at or below 9000, then on track 203°, cross BOSQE at or above 10000, thence. . . .

. . . . (transition). Maintain FL200. Expect filed altitude 10 minutes after departure.

LAMSE TRANSITION (BOSQE3.LAMSE)

SAINT JOHNS TRANSITION (BOSQE3.SJN)

SOCORRO TRANSITION (BOSQE3.ONM)

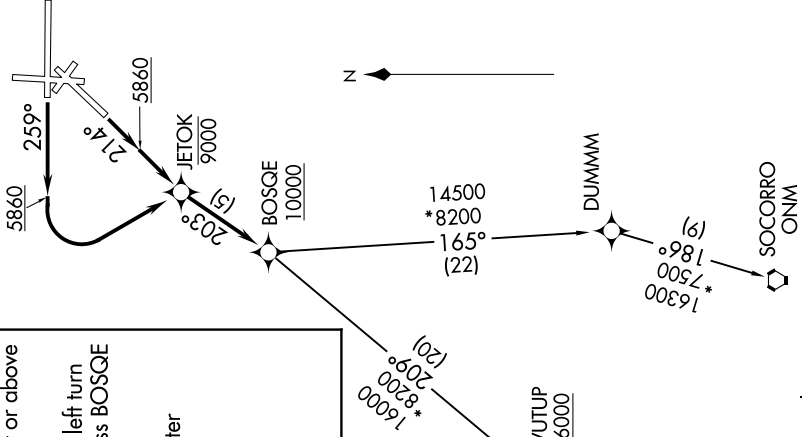
### TAKEOFF MINIMUMS:

Rwy 21: Standard with minimum climb of 500' per NM to 6000, then minimum climb of 478' per NM to 12400.

Rwy 26: Standard with minimum climb of 500' per NM to 6000, then minimum climb of 373' per NM to 13300.

D-ATIS  
118.0 257.7  
CLNC DEL  
119.2 259.3  
GND CON  
121.9 348.6  
ALBUQUERQUE TOWER  
120.3 351.9  
ALBUQUERQUE DEP CON  
123.9 354.1

**TOP ALTITUDE:  
FL200**



NOTE: Chart not to scale.

# BOSQE THREE DEPARTURE (RNAV)

SW-1, 10 SEP 2020 to 08 OCT 2020

NOTE: DME/DME/IRU or GPS required.

NOTE: For turbojet aircraft only.

NOTE: RNAV 1.

NOTE: RADAR required for non-GPS equipped aircraft.

NOTE: If unable to accept climb gradient, advise ATC on initial contact.

NOTE: For non-GPS equipped aircraft on: ONM Transition: ONM, ABQ and CNX DME's must be operational.

NOTE: For non-GPS equipped aircraft on: SJN Transition: ONM and ABQ DME's must be operational.