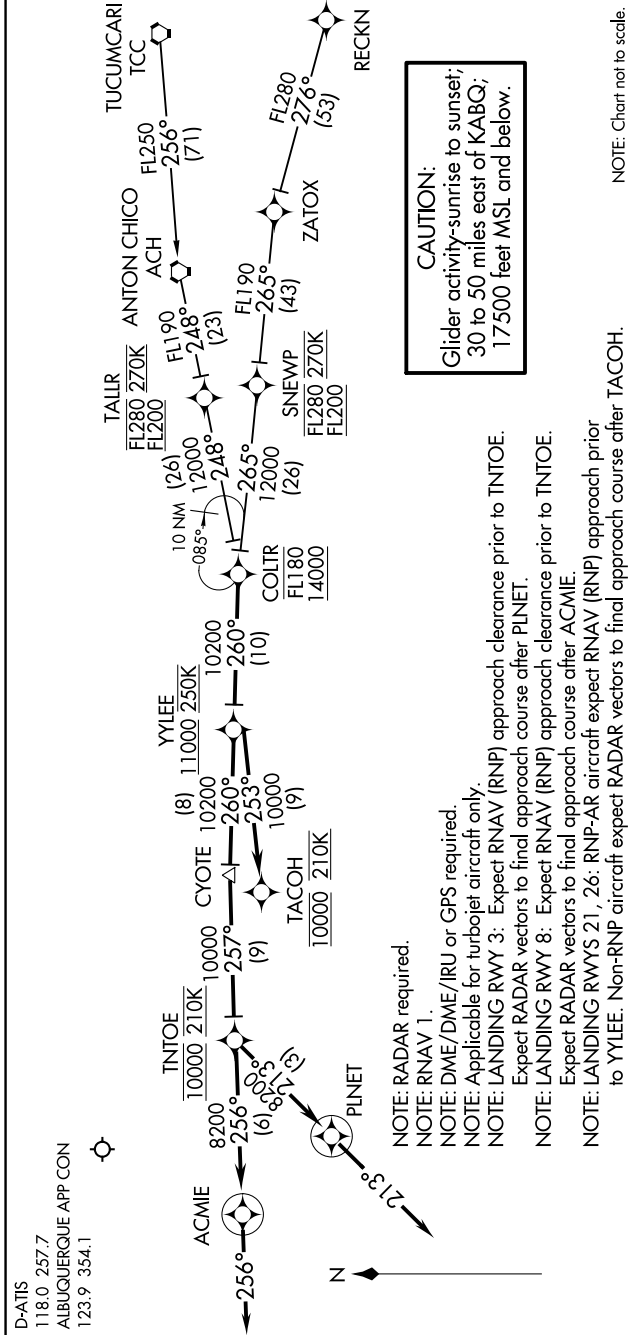


SW-1, 10 SEP 2020 to 08 OCT 2020



NOTE: Chart not to scale.

ARRIVAL ROUTE DESCRIPTION

RECKN TRANSITION (RECKN.COLTR3)

TUCUMCARI TRANSITION (TCC.COLTR3)

From COLTR on track 260° to cross YYLEE at or above 11000 and at 250K.

LANDING RUNWAY 3: From YYLEE on track 260° to CYOTE, then on track 257° to cross TINTOE at 10000 and at 210K, then on track 213° to PLINET, then on track 213°. Expect RADAR vectors to final approach course.

LANDING RUNWAY 8: From YYLEE on track 260° to CYOTE, then on track 257° to cross TINTOE at 10000 and at 210K, then on track 256° to ACMIE, then on track 256°. Expect RADAR vectors to final approach course.

LANDING RUNWAYS 21, 26: From YYLEE on track 253° to cross TACOH at 10000 and at 210K. Expect RNAV (RNP) approach or RADAR vectors to final approach course.

SW-1, 10 SEP 2020 to 08 OCT 2020