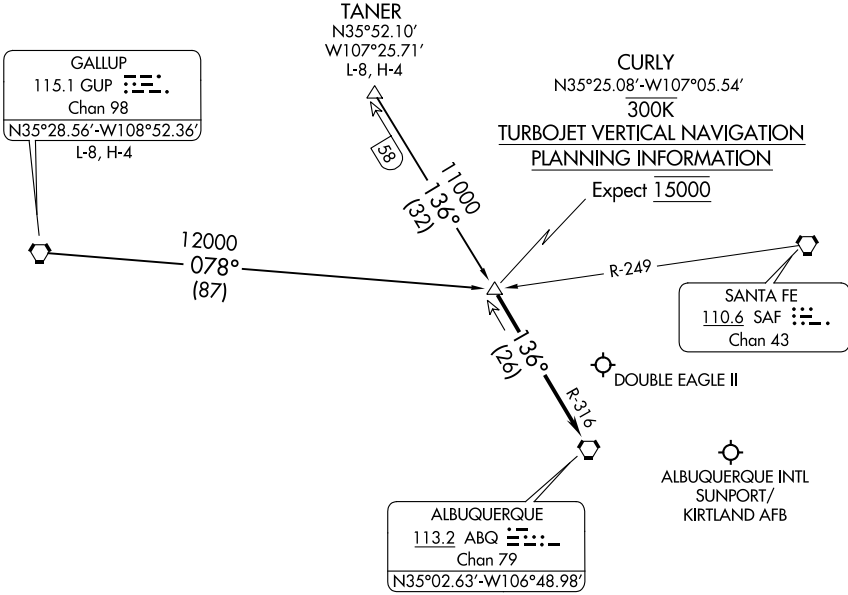


# CURLY THREE ARRIVAL

AL-12 (FAA)

ALBUQUERQUE, NEW MEXICO

ALBUQUERQUE APP CON  
127.4 253.5  
ABQ D-ATIS  
118.0 257.7



SW-1, 10 SEP 2020 to 08 OCT 2020

SW-1, 10 SEP 2020 to 08 OCT 2020

NOTE: Chart not to scale.

## ARRIVAL ROUTE DESCRIPTION

GALLUP TRANSITION (GUP.CURLY3): From over GUP VORTAC on GUP R-078 to CURLY. Thence. . .

TANER TRANSITION (TANER.CURLY3): From over TANER on ABQ R-316 to CURLY. Thence. . .

. . . From over CURLY on ABQ R-316 to ABQ VORTAC. Expect vectors to final approach course after passing CURLY.