

HI-ILS or LOC RWY 8

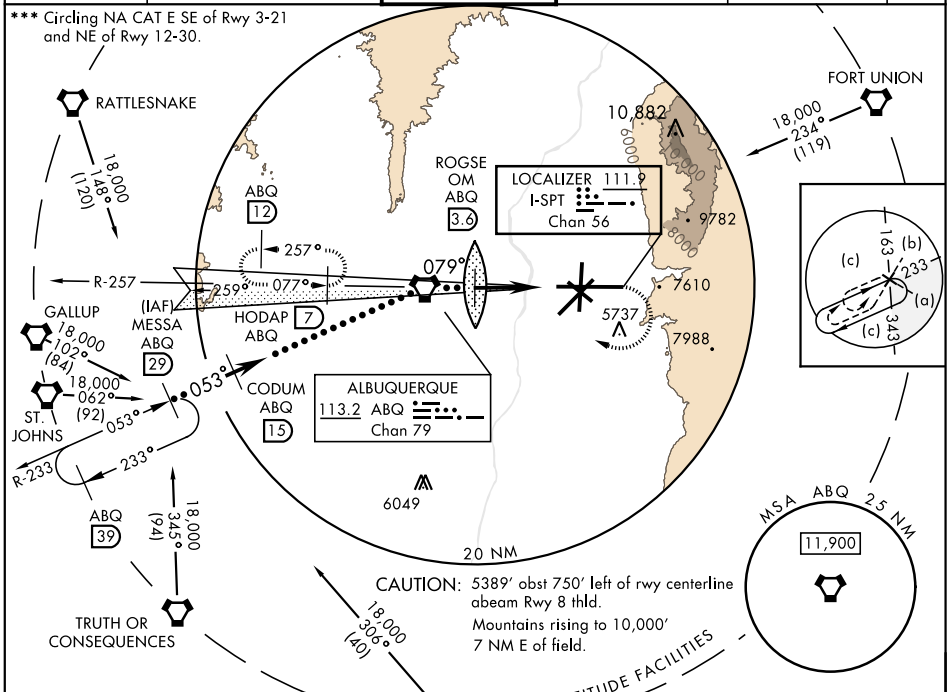
LOC I-SPT 111.9	APCH CRS 079°	Rwy ldg 12,793 TDZE 5320 Arprt Elev 5355	JAL-12 [USAF]	ALBUQUERQUE INTL SUNPORT (KABQ)
---------------------------	-------------------------	---	---------------	---------------------------------

▼ * When ALS inop, increase RVR to 40 and vis to 3/8 mile.
 ** When ALS inop, increase RVR to 60 and vis to 1/2 mile.

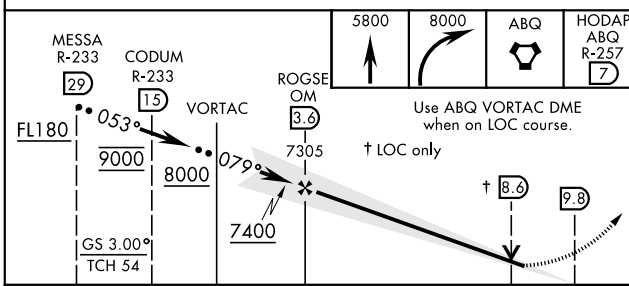


MISSED APPROACH: Climb to 5800 then climbing right turn to 8000 direct ABQ VORTAC and ABQ R-257 to HODAP/ABQ 7 DME and hold.

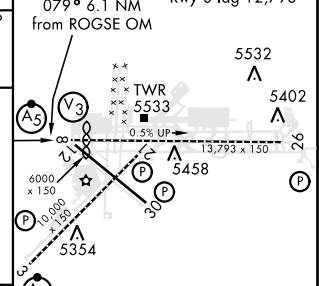
ATIS 118.0 257.7	ALBUQUERQUE APP CON 123.9 354.1	ALBUQUERQUE TOWER 120.3 351.9	GND CON 121.9 348.6	CLNC DEL 119.2 259.3	ASR
----------------------------	---	---	-------------------------------	--------------------------------	-----



DME REQUIRED
EMERG SAFE ALT 100 NM 15,400



ELEV 5355	TDZE 5320
-----------	-----------



CATEGORY	C	D	E
S-ILS 8 *	5529/24	209 (300-1/2)	
S-LOC 8 **	5740/40	420 (500-3/4)	
*** CIRCLING	5920-1 1/2 565 (600-1 1/2)	6460-3 1105 (1200-3)	

REIL Rwy 3-21, 26, and 30 HIRL Rwy 3-21 and 8-26 MIRL Rwy 12-30 TDZL/CL Rwy 3 and 8					
FAF to MAP 6.1 NM					
Knots	120	140	160	180	200
Min:Sec	3:03	2:37	2:17	2:02	1:50

HI-ILS or LOC RWY 8

SW-1, 10 SEP 2020 to 08 OCT 2020

SW-1, 10 SEP 2020 to 08 OCT 2020