

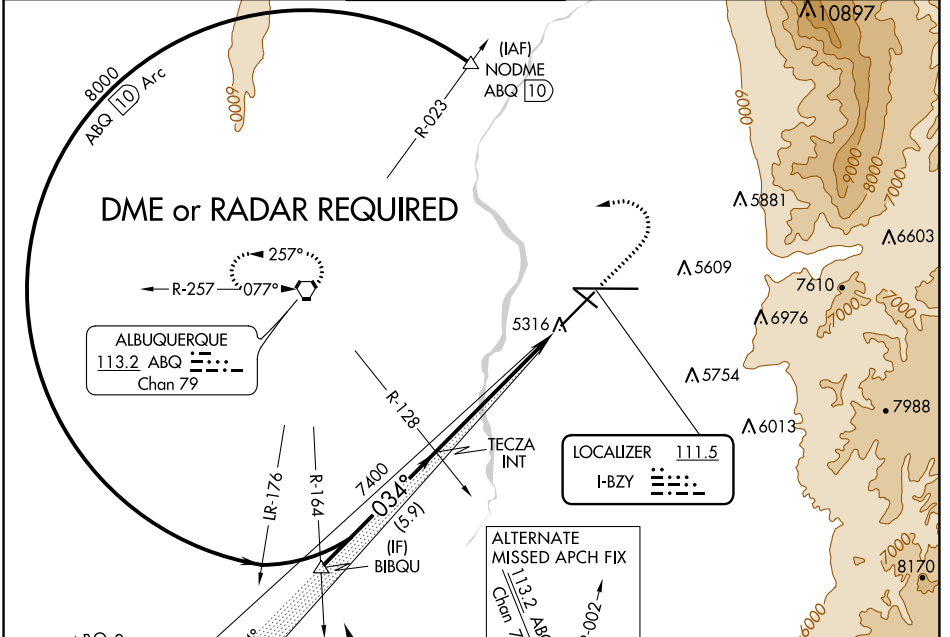
LOC I-BZY 111.5	APP CRS 034°	Rwy Idg TDZE Apt Elev	10000 5312 5355
---------------------------	------------------------	-----------------------------	--

ILS or LOC RWY 3

ALBUQUERQUE INTL SUNPORT (ABQ)

ASR	MALSR	MISSED APPROACH: Climb to 5900 then climbing left turn to 8000 direct ABQ VORTAC and hold.
------------	-------	--

D-ATIS 118.0 257.7	ALBUQUERQUE APP CON 123.9 354.1	ALBUQUERQUE TOWER 120.3 351.9	GND CON 121.9 348.6	CLNC DEL 119.2 259.3	CPDLC
------------------------------	---	---	-------------------------------	--------------------------------	-------



SW-1, 10 SEP 2020 to 08 OCT 2020

SW-1, 10 SEP 2020 to 08 OCT 2020

MSA ABQ 25 NM

9000, 11900, 10900

020°, 200°, 290°

IR-176, R-164, R-128, R-128, R-128

7400, 7400, 7400

034°, 034°, 034°

15-29, 15-29, 15-29

(IF) BIBQU

TECZA INT

5316 A

LOCALIZER 111.5 I-BZY

ALTERNATE MISSED APCH FIX

113.2 ABQ Chan 79

002°, 002°, 002°

116.8 ONM Chan 115

182°, 182°, 182°

R-002, R-117

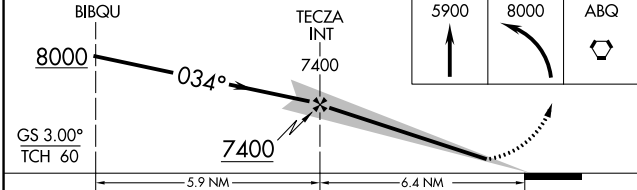
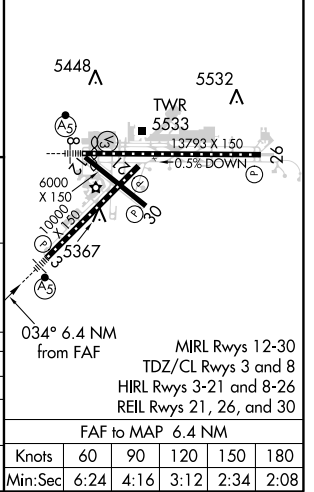
ENCIA ONM 25.5

8000, 8000, 8000

(IAF) COMRO

10000 210K (GPS REQD)

ELEV 5355	TDZE 5312
-----------	-----------



CATEGORY	A	B	C	D
S-ILS 3		5512/18	200 (200-½)	
S-LOC 3		5600/24	288 (300-½)	
CIRCLING	5840-1 485 (500-1)	5920-1 565 (600-1)	5940-1½ 585 (600-½)	6460-3 1105 (1200-3)

Knots				
60	90	120	150	180
Min:Sec	6:24	4:16	3:12	2:34