

LOC/DME I-SPT 111.9 Chan 56	APP CRS 079°	Rwy Idg 12793 TDZE 5320 Apt Elev 5355
---	------------------------	--

ILS or LOC RWY 8

ALBUQUERQUE INTL SUNPORT (ABQ)

DME required. RNAV 1 - GPS or RADAR required for procedure entry.

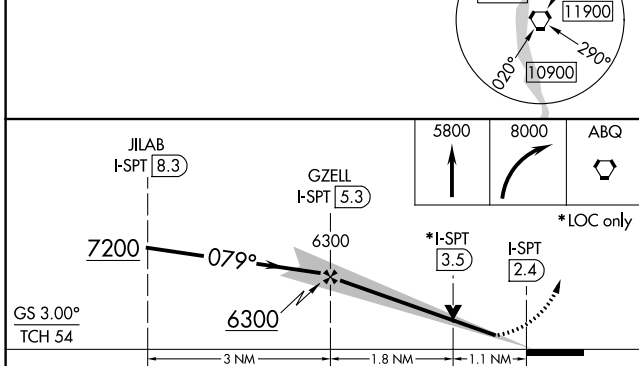
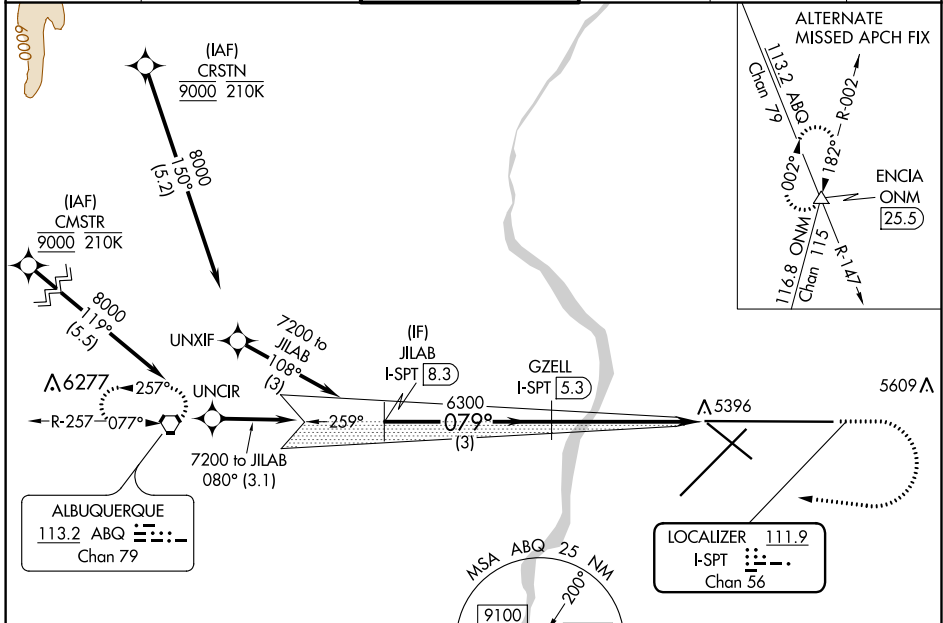
For inop ALS, increase S-LOC 8 Cat C and D visibility to RVR 6000.

ASR

MALSR

MISSED APPROACH: Climb to 5800 then climbing right turn to 8000 direct ABQ VORTAC and hold.

D-ATIS 118.0 257.7	ALBUQUERQUE APP CON 123.9 354.1	ALBUQUERQUE TOWER 120.3 351.9	GND CON 121.9 348.6	CLNC DEL 119.2 259.3	CPDLC
------------------------------	---	---	-------------------------------	--------------------------------	-------



ELEV 5355	TDZE 5320
-----------	-----------

Runway/Taxiway details: 079° 2.9 NM from FAF, 5448 A, 5532 A, TWR 5533, 13793 X 150, 0.5% DOWN, 6000 X 150, 5367, MIRS Rwy 12-30, TDZ/CL Rwy 3 and 8, HIRL Rwy 3-21 and 8-26, REIL Rwy 21, 26, and 30, FAF to MAP 2.9 NM.

Knots	60	90	120	150	180
Min:Sec	2:54	1:56	1:27	1:10	0:58

CATEGORY	A	B	C	D
S-ILS 8	5527/18 207 (200-½)			
S-LOC 8	5720/24	400 (400-½)	5720/40	400 (400-¾)
CIRCLING	5840-1 485 (500-1)	5920-1 565 (600-1)	5940-1½ 585 (600-1½)	6460-3 1105 (1200-3)

SW-1, 10 SEP 2020 to 08 OCT 2020

SW-1, 10 SEP 2020 to 08 OCT 2020