

(KRKEE.KRKEE3) 17117

KRKEE THREE ARRIVAL (RNAV)

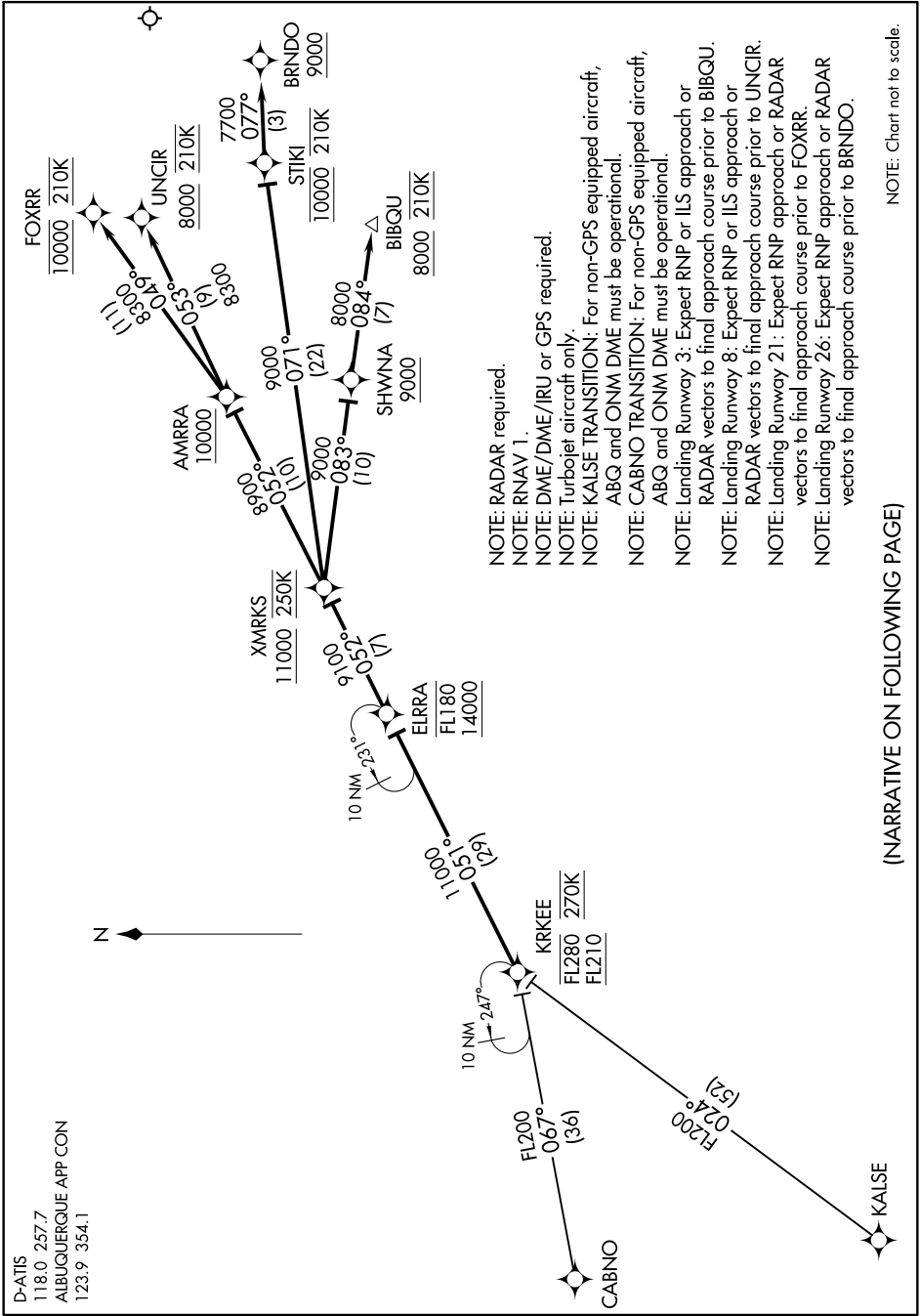
AL-12 (FAA)

ALBUQUERQUE INTL SUNPORT (ABQ)

ALBUQUERQUE, NEW MEXICO

SW-1, 10 SEP 2020 to 08 OCT 2020

D-ATIS
118.0 257.7
ALBUQUERQUE APP CON
123.9 354.1



- NOTE: RADAR required.
- NOTE: RNAV 1.
- NOTE: DME/DME/IRU or GPS required.
- NOTE: Turboprop aircraft only.
- NOTE: KALISE TRANSITION: For non-GPS equipped aircraft, ABQ and ONM DME must be operational.
- NOTE: CABNO TRANSITION: For non-GPS equipped aircraft, ABQ and ONM DME must be operational.
- NOTE: Landing Runway 3: Expect RNP or ILS approach or RADAR vectors to final approach course prior to BIBQU.
- NOTE: Landing Runway 8: Expect RNP or ILS approach or RADAR vectors to final approach course prior to UNCIR.
- NOTE: Landing Runway 21: Expect RNP approach or RADAR vectors to final approach course prior to FOXRR.
- NOTE: Landing Runway 26: Expect RNP approach or RADAR vectors to final approach course prior to BRNDO.

(NARRATIVE ON FOLLOWING PAGE)

NOTE: Chart not to scale.

KRKEE THREE ARRIVAL (RNAV)

(KRKEE.KRKEE3) 08JAN15

ALBUQUERQUE, NEW MEXICO
ALBUQUERQUE INTL SUNPORT (ABQ)

SW-1, 10 SEP 2020 to 08 OCT 2020